

GLENRAC

News letter

Jan /Mar 2018



GLENRAC's vision is to provide solutions for a sustainable and productive landscape.

Where to find us - National Parks & Wildlife Services Building, 68 Church St
Office Hours— Mon to Fri 9am to 5pm

Inside This Issue

- Good news
- New Books & apps
- Around the Farm
- Renewable Energy
- Weed update
- Funding opportunities
- Coming Events



FOLLOW US ON

Instagram



Local Land Services
Northern Tablelands



Local Land Services



New GLENRAC Subcommittees

SUSTAINABLE AGRICULTURE SUB-COMMITTEE

Carol Harris, Sandy Fitzgerald, Peter Croft, Mike

Norton, Ian Lockwood; Staff Jennie Coldham, Lucy Faithfull
Priority: A. Sustaining Land - vegetation, soils, weeds, land use

Goal 1: ENHANCE VEGETATION COVER AND WATER USE EFFICIENCY

Goal 2: HEALTHY SOILS FOR HEALTHY LANDSCAPES

Goal 4: LANDHOLDER EDUCATION

Priority B: Managing Water - erosion control, water quality

Goal 1: REDUCE RISK OF SOIL EROSION AND REPAIR ACTIVE EROSION SITES.

Goal 2: PROTECT WATERWAYS AND RIPARIAN ZONES

Priority C. Achieving Balance - biodiversity, flora-fauna, pest animal and people

Goal 4 BUILDING STRONG ROBUST COMMUNITIES

Current Projects include "Looking at Legumes—Glen Innes", "Get Socially Savvy", "Great Governance for Connected Communities" and Powering Productive Pastures for Glen Innes"

GLENRAC PESTS (WEEDS AND PEST ANIMALS) SUB-COMMITTEE

Chair: Ian Lockwood ; Mike Norton, Ian Lockwood, Andrew Campbell, Ian Trow, Jane Munro; Staff - Kylie Falconer, Lucy Faithfull

Priority C:

Goal 3: CONTROL OF PEST ANIMALS

Priority A:

Goal 3: REDUCE THE IMPACT OF WEEDS

GLENRAC TREES / BIODIVERSITY SUB-COMMITTEE

Chair: Sandy Fitzgerald, Ian Trow, Rose Gettens, Peter Croft, Tony Corcoran, Ian Lockwood, Andrew Campbell; Staff - Jennie Coldham, Kelly Walsh

Priority C: Achieving Balance - biodiversity, flora-fauna, pest animal and people

Goal 1: BIODIVERSITY UNDERSTANDING AND ENHANCEMENT

Goal 2: PROTECT NATIVE HABITAT

Main current projects includes "Trees on Small Farms" and "Walk on the Wild Side"

These sub-committees will help steer GLENRAC's direction in these priority areas highlighted in the GLENRAC Strategic Plan



GLENRAC Matters

Hello GLENRAC members,

As we enter our 29th year, we wish you all a safe and healthy new year with lots of laughter and a healthier environment. This year we will again be concentrating on our mission which is to initiate and coordinate action for landholders and the community and manage and maintain the natural resource base of the Glen Innes region, for the improvement of both the social and productive environment. Come and join us on the journey.

Regards, GLENRAC Staff—Kylie, Lucy, Tanya, Jennie & Kelly

GLENRAC Successful awards and Grants



Rio Tinto Indigenous Land Management Award. Members of the Northern Tablelands Aboriginal Reference Group were runners up at the

NSW Landcare and Local Land Services Conference, Albury award ceremony. Recognition was awarded for engaging their local aboriginal and non-aboriginal communities in protecting Country while sharing a passion for preserving local history and Aboriginal lore using modern land management techniques.

Recent Successful Grants

NENWNLP-1718-5 LandGirls - Get Socially Savvy

This project will enable Landgirls to deliver two training events for Landcare and interested community members to improve skills and knowledge with respect to the use of social media. This will add to the resilience of both their business and community by promoting, sharing, learning and accessing information via these social media tools.

NENWNLP-1718-4 Looking at legumes - Glen Innes

Livestock grazing is the major agricultural industry across the Northern Tablelands of NSW. Healthy soils and pastures are the cornerstone of this industry and it's on going sustainability. Pasture legumes play an important part in animal production and soil health, but little is known about their effectiveness in fixing nitrogen on the Northern Tablelands nor the range of legume species that will persist in temperate summer dominant rainfall areas.

Grassland Society of NSW Northern Branch will partner with NSW Department of Primary Industries and GLENRAC to deliver an event focussed on pasture legumes, their role in livestock production systems and benefits to soil fertility.

NENWNLP-1718-1 Great Governance for Connected Communities

This project will deliver training to build the skills and the capacity of approx 80 members of the community to be able to better achieve their own goals and objectives. The training and resources for improved governance, allows volunteer members to focus their energies on delivering effective on ground outcomes. It will also assist GLENRAC in assessing and improving Board Effectiveness and undertaking a skills audit.

NENWNLP-1718-7 Walk on the Wild Side

This project will consist of three events increasing local knowledge of flora and fauna. These skills will be provided to the participants by regional herpetologist/ecologist, Alex Dudley and Dr Peter Croft from National Parks. Participants will then be in a more effective position to manage their natural environment going forward.

Powering Productive Pastures for Glen Innes

This project aims to connect local farmers with new technologies to support management decisions. The project will fund one demonstration site of 40 hectares to implement precision agriculture technologies for pastures and showcase technology that is now available to support investment decisions in regards to farm inputs and development.

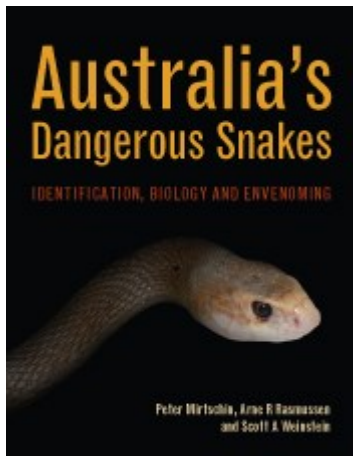
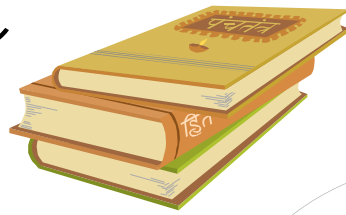
Funding Source - Landcare Australia Limited - Workplace Giving

NT00515 - Trees on small farms Partnership Project

GLENRAC will deliver this project planting a minimum of 10,000 native seedlings planted on farm; a minimum of 12 farms engaged; 2 community engagement events and 4 media opportunities.

This project is supported by Local Land Services through funding from the NSW Government.

New Books



AUSTRALIA'S DANGEROUS SNAKES

<http://www.publish.csiro.au/book/6631>
November 2017 - AU \$120.00

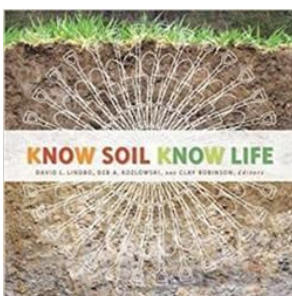
Examines the role played by Australia's venomous snakes, the threats they face, their ecology and the latest in bite management.

FROGS COUNT!

Frogs are a sign of a healthy environment, but around Australia frogs are declining and many are endangered. By counting Australia's frogs we can learn more about where they are and how they're doing. There's no way scientists can count Australia's frogs on their own. The country's too big and there's too many frogs! That's where you come in. With FrogID, citizen scientists just like you can help us put frogs on the map!



<https://www.frogid.net.au/>



Know Soil, Know Life

Did you ever consider that with no soil there would be no life?

Know Soil, Know Life will introduce you to an amazing world-the world beneath your feet.

Soil is the foundation our natural living world depends on, the substance of life, the critical zone of the earth. Soil is not dirt. SOIL IS LIFE!

\$87.95 includes gst and postage

FREE CALL
1300 811 681

HARVEST and HOLIDAYS

Roads and Maritime Services are issuing a reminder to farmers and grain transporters this harvest to take care and avoid driving tired. To help get this timely road safety message out RMS is pleased to have the support of organisations such as Central West Lachlan Landcare.

When we talk about driver fatigue, we are talking about driving tired and fatigue-related crashes, which can happen on any trip no matter how long or short or time of day. It's important to think about how tired we are before driving, recognise the early warning signs when driving and know what to do to avoid driving tired.

Did you know?

- Fatigue is one of the big three killers on NSW roads
- Fatigue-related crashes are twice as likely to be fatal - drivers who are asleep can't brake. Being awake for about 17 hours has a similar effect on performance as a blood alcohol content (BAC) of 0.05

Beware of driver fatigue this harvest...

We understand due to the threat of weather, the pressure of rapidly ripening crops and the cost of machinery and contractors, farmers have a tight window for harvesting to ensure they get the best possible returns for their business but don't let this compromise safety...

Be alert to the warning signs of driver fatigue:

- Yawning
- Poor concentration
- Sore/tired eyes
- Restlessness
- Drowsiness
- Slow reactions
- Boredom

Oversteering

Here are some tips for avoiding driver fatigue:

- Get a good night's sleep first
- Avoid driving at night or when you'd normally be asleep
- Try out testyourtiredself.com.au
- Arrange a buddy to share the driving
- Plan regular breaks in your trip
- If you feel tired pull over for a break in a safe place (suggest 20 minutes) for a power nap. Stop for a coffee/energy drink - but caffeine won't help for long and it won't work for everyone. There is only one cure for fatigue. It's sleep.

More

information: www.roadsafety.transport.nsw.gov.au

Around the Farm

CHILD SAFETY ON FARMS: FACT SHEET

ISSUE

Children on farms are at risk of injuries and death from drowning in dams, incidents involving horses, or being run over or falling from farm vehicles, such as trucks, utes, motorbikes and quad bikes. There are also dangers from coming into contact with hazardous chemicals and machinery.

RECOMMENDATIONS

Have a securely fenced play area for children.
Actively supervise children.
Provide shade for play areas.
Don't allow children to ride on farm vehicles unrestrained and ensure they wear seatbelts in cars, utes and trucks.
Don't let children operate or be carried as passengers on quad bikes - Drivers > 16yo
Ensure children wear helmets when riding horses and motorbikes.
Don't allow unsupervised child access to silos, stockyards, chemical stores, workshops and other dangerous places around the farm.
Don't allow children in chemical-affected areas.
Keep chemicals and pesticides in a secure area.
Choose appropriate containers to store chemicals - don't use soft drink bottles or other drink containers.
Lock your workshop, chemical store and machinery sheds.
Remove the keys from machinery and vehicles when they are not in use.



Prevent access to silos with a ladder lock-out system, or by removing the bottom section of the ladder.

Ensure electrical outlets are not within easy reach of children, and ensure an RCD (residual current device) is fitted.

Fence water hazards, where possible.

Fit all tank wells with lids or strong mesh.

Have a first aid kit close at hand.

Undertake first aid and

resuscitation training, where possible.

FURTHER INFORMATION

For more information on child safety on farms, see: <http://www.safework.nsw.gov.au/media/publications/health-and-safety/child-safety-on-farms-fact-sheet>



FarmWell Survey - tell us what you think farming communities need, to maintain their wellbeing.

The Centre for Mental Health Research at the Australian National University (ANU) is interested in studying links between various aspects of farming and mental health outcomes of people living in farming communities, with the aim to develop information and tools that farming communities can use to better manage their farms and their mental health. We highly value the input of members of farming communities around Australia on what they think is important in this respect.

If you are over 18 and are a farmer, former farmer, live on a farm, or are otherwise closely involved in a farming community, we are interested in your views.

Please [click here](#) to read more about the project and complete the survey at a time convenient to you. We estimate the survey will take approximately 30 minutes of your time.

This survey will inform a broader research program at ANU known as the Sustainable Farms Initiative. This program of research at ANU is looking to help create a sustainable future for Australian farmers by building on 20 years of ecological research in agricultural landscapes to better understand relationships between environmental management, mental health and financial success. You can learn more about this new initiative [here](#). To participate in the survey please go to: <http://www.regionalwellbeing.org.au/>

Plains-wanderer team members attend conference



In early November 2017, Claire Gannon & Megan Purvis (Murray Local Land Services) attended the Australasian Ornithological Conference in Geelong.

Over the three days there were 125 oral presentations and 25 poster presentations covering managing threatened species, conservation genetics, evolution of Australian birds, waterbirds, woodland birds and Avian Pathogen Coevolution.

Of particular interest was the presentation undertaken by Sarah Legge from The University of Queensland on

'The threat posed by all cats to Australian birds'.

The research, undertaken by the Threatened Species Recovery Hub, has estimated the extent of predation by cats on Australia's birds and identified the species and types of birds most vulnerable to cats.

The research estimated that **cats kill over one million birds per day** in Australia, with most of these being native birds. The study also identified birds most at risk are those that feed or nest on the ground, are medium sized (60 grams to 300 grams) and occur in woodlands, grasslands, shrublands and islands. The control of feral cats has proved to be a challenge, with the current control methods being difficult, expensive and time consuming. This presentation, and our daily work as project officers of the Plains-wanderer project, highlights the need for further research to be undertaken into developing more effective control mechanisms.



Reporting pest animal sightings

<https://www.pestsmart.org.au/connect/nsw/nsw-northern-tablelands/>

We aim to provide contact details of agencies, organisations and groups that are active in pest animal management and can provide people with services, useful advice or assistance - both at policy and practical on-ground levels. If you would like your group or agency listed, please [[CLICK HERE](#)] to fill out the form and submit your details.

Pest Animals Incursions - People & Pests Animal Welfare News Events Videos Apps -

PestSmart Home | Connect | Connect: New South Wales | NSW: Northern Tablelands

NSW: Northern Tablelands

Groups and organisations in your region

<p>TTL Rural Pest Management</p> <p>Professional shooting and vermin control We can cater to your Feral animal and native animal management needs including but not</p>	<p>Australian Feral Animal Control and Management Services Pty. Ltd.</p> <p>Australian Feral Animal Control and Managements Services Pty. Ltd. has created a Co-Operative scheme to</p>	<p>Silent Night Pest Management</p> <p>We provide pest management services in the form of ground shooting, trapping and baiting. We also provide monitoring and surveys. We</p>	<p>Local Land Services - Northern Tablelands</p> <p>Provide advice and assistance in eradicating declared pest species</p>
--	--	--	---

Renewable Energy

Hydropower

Hydropower uses the force or energy of moving water to generate power. This power is also called 'hydroelectricity'.

Hydropower is generated when falling water is channeled through water turbines. The pressure of the flowing water on turbine blades rotates a shaft and drives an electrical generator, converting the motion into electrical energy. It is the most advanced and mature renewable energy technology, and provides some level of electricity generation in more than 160 countries worldwide.

Hydropower plants range from very small to very large individual plants and vast integrated schemes involving multiple large hydropower plants. Our key hydropower project provided knowledge to improve the design and operation of small hydro systems, where much of the potential expansion of hydropower production exists. The impact of this project has gone world-wide, attracting interest from the United States, Indonesia and the Mekong.

In 2013, Australia had over 120 operating hydroelectric power stations, with a total generation of almost 20 GWh or 8% of total energy generated.

In the future there may be some growth in use of 'mini-hydro' schemes—which can be 'run-of-river', with no dam or water storage, or developed using existing or new dams whose primary purpose is local water supply, river and lake water-level control, or irrigation. http://www.dairyingfortomorrow.com.au/wp-content/uploads/Hydro-power-for-dairy-farms_final.pdf for ideas on farm.

In 2029-30, the share of hydropower in Australia's total electricity generation is projected to fall to around 3.5%. <https://arena.gov.au/about/what-is-renewable-energy/hydropower/>

St John's Wort

It's believed that St John's Wort was brought to Australia in the late 1800's, and has spread across Eastern Australia and is now one of our worst widespread weeds. It is suited to areas receiving more than 600 mm annual rainfall and above 500 m altitude. This makes the New England perfect habitat for St Johns Wort and we have a number of areas that are heavily

NEWA: Weed Officers are on hand to assist with your noxious weed identification, management and control.

Visit www.newa.com.au or Phone 6770 3602



Glen Innes Severn
Luke Turner
0438 501 286



Armidale Regional
Robert Williams
0439 711 701



Weed update

St John's Wort

infested. With good rain this season the Wort is now in full flower and immediate control will help reduce the seed bank in future years.

The main problem with St John's Wort is that it is toxic. It produces a compound called hypericin, which causes photosensitisation in animals that graze on it. Basically, these animals become allergic to sunshine and the skin damage caused by hypericin poisoning is a horrible thing to see. It also causes loss of condition and in some cases death. Generally, stock will only eat St John's Wort when other feed is scarce.

St John's Wort produces distinctive 5 petaled yellow flowers, about 20 mm across, between October and January. New plants do not flower in the first year. The leaves are a very distinctive identifier as they have small perforations, or clear dots, within the leaf that can be clearly seen when held up to the light. Wort on your property, allowing one plant to set seed can ensure 12 more years of ongoing work. The roots of St John's Wort sucker and grow from fragments; as a result cultivation and disturbance can also spread the plant.

Land managers must mitigate the risk of introducing St John's Wort to their land and it is an offense under the Biosecurity Act 2015 to knowingly distribute the weed so take care with moving stock out of infested areas. Management techniques include burning, physical removal and herbicides. Careful pasture management can increase competition from desirable species. Heavy grazing in Spring when the new flowering stems appear can significantly reduce growth and in turn reduce hypericin production. Given the long seed life of St John's Wort a good management plan will involve a number of approaches over a number of years.



Funding and Scholarship Opportunities

Potter Foundation Funding

Open Mon 26/03/2018 - Close Fri 20/04/2018

Applications for the community wellbeing, education, environment/conservation and science rounds of funding from the Ian Potter Foundation open 26 March 2018 and close 20 April. More? Funding

Website: www.ianpotter.org.au



Coles Nurture Fund

Open Tue 19/12/2017 - Close Mon 19/02/2018 Coles has established the Coles Nurture Fund (CNF) to help small

Australian food and grocery producers, farmers and manufacturers to innovate and grow their business. The Coles Nurture Fund will allocate \$50 million over five years in grants and inte...

Funding Website: <https://www.coles.com.au/corporate-responsibility/our-suppliers/working-together/coles-nurture-fund-guidelines>

RAS Foundation Community Kitchen Grant

Tue 19/12/2017 - Sun 04/02/2018 The Royal Agricultural Society of NSW Foundation (RASf) is giving rural and regional NSW community organisations the chance to win funding and appliances worth more than \$20,000 to create a community kitchen.

On farm producer projects sought for 2018 MLA's Producer Demonstration Sites (PDS) program aims to increase the rate of adoption of key management practices and technologies that improve business profitability and productivity, by shortening the time lag between technological innovation and adoption of practices by producers.

The PDS program supports groups of livestock producers to adapt, validate and demonstrate the business value of integrating new management practices and associated skills into local farming systems. The key outcome of a PDS is producer adoption of the demonstrated management practices resulting in improved business performance.

Producer groups are provided with a practical hands on environment that enables them to share experiences and participate in the commercial application of research outputs.



Funding is available to groups of producers who wish to adapt, validate and demonstrate the business value of integrating new technologies and on-farm management practices into local farming systems.

Funding is specifically aimed at supporting producers advance the sustainable and profitable production of red meat. Groups will require a person experienced in group facilitation and extension, monitoring and evaluation of on-farm practice change and communication and reporting, to oversee the demonstration.

Projects can apply for funding grants of up to \$25,000(ex GST) over a maximum of three years

Open Date: Tue 19/12/2017

Close Date: Wed 31/01/2018

Funding Website: www.mla.com.au/extension-training-and-tools/producer-demonstration-sites/

Small Environmental Grant Scheme

Open Thu 14/12/2017 - Close Mon 22/01/2018

Grant Round is Open for application up to \$10,000. Apply for a small grant to run a citizen science or community education project about saving our Australian flora and fauna. For more information <https://wettenhall.org.au>



2018 Scholarships Guide a one-stop-resource for school leavers

The Country Education Foundation (CEF) has

launched a new online **Scholarships Guide** today, helping young rural and regional Australians access scholarships, grants and bursaries. This purpose-built online search platform will allow students to locate hundreds of scholarships in just a few quick clicks.

There are hundreds of thousands of dollars in scholarships up for grabs each year but knowing where to look and how to apply is a big hurdle for school leavers, especially country students who don't have easy access to tertiary institutions.

CEF has brought together scholarships from a broad range of facilities from across Australia in one easy to use website. The **CEF 2018 Scholarships Guide** is a gold mine of higher education scholarship opportunities. The **CEF 2018 Scholarships Guide** is available to search now at www.cef.org.au.

GLENRAC OPERATING COMMITTEE 2017/18

CHAIRMAN - John Bavea

VICE CHAIR - Ian Lockwood **TREASURER** - Sam Baker **SECRETARY** - Tony Corcoran

LANDHOLDER & DEPARTMENT REPRESENTATIVES:

Andrew Campbell, Chris Leahy, Jane Munro, Jim Benton, Mark Donovan, Mike Norton, Rose Gettens, Sandy Fitzgerald.

Glen Innes Severn Council : Graham Price or Ian Trow & Col Price

Department of Primary Industries : Carol Harris ,

National Parks & Wildlife Office: Peter Croft

Glen Innes Local Aboriginal Lands Council: Jayden Potter

Public Officer: Mark Donovan

For all questions relating to GLENRAC please contact our staff at -

68 Church Street (PO Box 660) GLEN INNES NSW 2370

Ph: (02) 6732 3443

Mobile 0427 325 901

email kylie@glenrac.org.au

GLENRAC
PO Box 660
GLEN INNES
NSW 2370



To The Land Manager

This activity is part of the Local Landcare Coordinators Initiative



**Local Land
Services**

The Local Landcare Coordinators Initiative is funded by the NSW Government, and is supported through the partnership of Local Land Services and Landcare NSW.



Glen Innes Natural Resources Advisory Committee

Coming Events:

- | | |
|----------|---|
| 18 Jan | GLENRAC Focus -Jodi Rowley: Australian Museum - Frogs |
| 9-11 Feb | Glen Innes Show |
| 15 Feb | Vertebrate Pest Training (1080 & Pindone), Glen Innes |
| 15 Feb | GLENRAC Focus |
| 15 Mar | GLENRAC Focus |
| 17 Mar | Alex Dudley—Walk on the Wild Side |
| 30 Mar | Good Friday |
| 19 April | GLENRAC Focus - Take stress out of Conversations - Jen Haberecht |
| April | Bus trip with Peter Croft - Indigenous Plant identification |
| 17 May | GLENRAC Focus - Dave Carr: Stringybark Ecological - Die Back in Eucalypts |