

# GLENRAC

# Newsletter

Nov/Dec 2013

Where to find us - National Park & Wildlife  
Services Building, 68 Church St  
Office Hours— Mon to Fri 8:30am to 4:30pm

## Inside This Issue

- Local news
- Project Snapshot
- Pest and weed update
- Book reviews
- Funding & Training Opportunities



**\*\* DATE CLAIMER \*\***

### COMMUNITY EMPOWERMENT

9th 10th November  
Ben Lomond

### LANDCARE ADVENTURE 2014

19th 20th March 2014 Glen Innes

## NATIVE VEGETATION REGULATIONS

NSW Farmers met with the Office of Environment and Heritage (OEH) and various Catchment Management Authorities (CMA) representatives last week regarding native vegetation self assessable codes. Representatives at the meeting are responsible for developing self-assessable codes for new Routine Agricultural Management Activities (RAMAs) as a part of the new native vegetation regulations which commenced on 23 September 2013.

NSW Farmers is pleased to be involved in the development of the codes and is lobbying for sensible and workable codes which improve the current native vegetation scheme in NSW.

**For more information about changes to the regulations visit**  
[www.environment.nsw.gov.au/vegetation/nvreg.htm](http://www.environment.nsw.gov.au/vegetation/nvreg.htm)

## DIRT TO DOLLARS WORKSHOP

Wednesday 6th November 2013  
WINTERS ROAD  
GLEN INNES

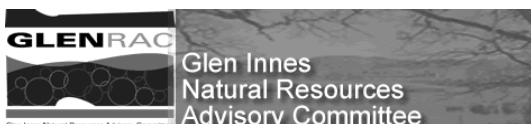
Practical ways to implement  
Sustainable Farming principles  
RCS Consultant Garry McDouall  
RSVP by 30th October  
to secure your registration.  
Contact GLENRAC on 6732 3443 or  
[office@glenrac.org.au](mailto:office@glenrac.org.au)  
This workshop is supported by



CARING  
FOR  
OUR  
COUNTRY



Catchment Management  
Authority  
Border Rivers-Gwydir



Catchment Management  
Authority  
Northern Rivers



Catchment Management  
Authority  
Border Rivers-Gwydir



CARING  
FOR  
OUR  
COUNTRY



# GLENRAC News

Hello All,

Since the last edition we held our AGM in September which was well attended. After formalities and guest speaker the Hon. Scot MacDonald MLC, discussion time was productive. The AGM saw Jeff Lowien elected to his new role of secretary and we are delighted to welcome Research Agronomist Carol Harris to our Committee. All other members were elected unopposed. We have also been busy working on projects such as assessing applications for the riparian habitat project, stage three of the Honey Locust control project, progressing the Action on the Ground Best Management Practices of Carbon Management on farms, the third Measure to Manage workshop and organising the upcoming dirt to dollars and community empowerment workshops. Staff also attended the 2013 NSW Landcare Conference in Newcastle which provided a unique networking opportunity. The conference also showcased how other landcare networks operate, including, the Little River story of how one group is facing its challenges and changing the way it works.

We are currently applying for Environmental Trust funding and were very pleased to receive recent funding from the New England Mutual and Glen Innes Severn Council, towards the 2014 Landcare Adventure to be held in Glen Innes on 19<sup>th</sup> 20<sup>th</sup> March 2014. In the coming weeks we will continue with project work, host our next General Committee Meeting on 1st November, attend first aid refresher training, continue planning for the Landcare Adventure, and continue meeting our CSO Contract deliverables.

Until next time,

*Tanya and Lucy*

## Dumaresq Catchment Invasive Species Field Day

You are invited to come along to Glenlyon Dam for a great day of presentations on WEEDS & PEST ANIMALS in the Dumaresq River Catchment

14 November, 2013

Glenlyon Dam Tourist Park,  
via Mingoola

10am QLD time / 11am NSW time

Learn about **weeds** threatening the region & their management, including:

- ☑ **Invasive vines:** Cat's Claw Creeper & Madeira Vine
- ☑ **Aquatic weeds:** Water Hyacinth & Water Lettuce
- ☑ **Toxic weeds:** Green Cestrum
- ☑ **Emerging weed threats :** Giant Parramatta Grass, Groundsel Bush, Tropical Soda Apple & Honey Locust

Learn from experienced personnel on the management of **pest animals** in the Dumaresq Valley

Morning tea & a BBQ lunch will be provided.

RSVP's are essential for catering purposes. Please RSVP before Wednesday, 6th November, to Tom Macindoe on 0427 241 806 or John Conroy on 0429 475 385

## Climate change is a hot topic. Are you concerned about how climate change will affect your farm, business and lifestyle?

The Border Rivers-Gwydir CMA would like to know your opinion on how climate change will affect the New England and North West region of the catchment and how people are adapting and planning for the future.

The CMA is holding workshops across the New England and North West region. In these workshops, we would like your feedback on your priorities for agriculture and the environment in your local area. Your feedback will help us upgrade our Catchment Action Plan (CAP).

The CMA has invited guest speakers to come along to our workshops to share their experiences in how they are adapting climate change.

**Workshops will be held at the following locations from 6pm to 8.30pm:** Glen Innes-12th November, Glen Innes Railway Hotel  
**RSVP by 5th November,**  
Tenterfield-19th November, Tenterfield Bowling Club  
Ashford-20th November, Ashford Commercial Hotel  
Inverell-21st November, Royal Hotel  
**4pm RSVP by 12th November, 4pm**  
**Guest Speakers**

Climate change expert from CSIRO(to be advised)

Landholders sharing their experiences: Glenn Morris @ Glen Innes, Inverell and Tenterfield and Bill Yates @ Ashford  
Come along to enjoy a complementary dinner and hear about local experiences!

For more information or to RSVP please contact:

Wendy Miller on (02) 6728 8039 or email

[wendy.miller@cma.nsw.gov.au](mailto:wendy.miller@cma.nsw.gov.au) OR Vicky Wong on

(02) 6728 8036 or email [vicky.wong@cma.nsw.gov.au](mailto:vicky.wong@cma.nsw.gov.au)



# GLENRAC Project Snapshot

## *Dirt to Dollars*

Following a very successful “Healthy Soils” workshop facilitated by Garry McDouall from Resource Consulting Services, GLENRAC is pleased to present a “Dirt to Dollars” workshop at the Lynn’s property, Winters Rd, south of Glen Innes. To be held on the 6th November, this second workshop will be an on-farm day spent looking at soil, grass, animals, and infrastructure. The aim throughout this day is to create discussion around how to implement the principles learned at “Healthy Soils” and make the system work in the best possible way.

We often fall into the trap of feeling that we need to spend money before we can make a change. These workshops will help participants to look initially at how to use what is available at the farmer’s disposal right now to maximise results, rather than work on what they do not have.

There will be a bus going from Glen Innes on the day. Morning tea and lunch will be provided. Please contact the GLENRAC office for more information and to register : phone GLENRAC 6732 3443 or email [office@glenrac.org.au](mailto:office@glenrac.org.au) by the 30th October for catering and so we can get the right sized bus!

## *Community Empowerment to develop the Ben Lomond community & landcare capacity*

“Are you sick of beating your head against a brick wall?  
Come and learn new skills and hone others”

Course will cover:

|                               |                            |
|-------------------------------|----------------------------|
| Unlocking potential           | Developing Lobbying skills |
| Make your voice heard         | Personal development       |
| Communicate to be understood  |                            |
| Developing alliances          | Make things happen         |
| How to negotiate              | Working effectively        |
| Developing negotiating skills | Influence decision makers  |
| Resolve conflict              |                            |

The course will be run over two days from the 9th to 10th November. The cost is \$30.00 per head for the weekend. The days run from 8:15am till 5:00pm at the Ben Lomond Hall and will include Morning tea and lunch. Please contact the GLENRAC office for more information and to register :  
Phone GLENRAC 6732 3443 or email [office@glenrac.org.au](mailto:office@glenrac.org.au) by the 5th November for catering

## *Implementing property management plans to improve riparian habitats in priority rivers and streams*

Expressions of interest have now closed for this project and the steering committee will convene in early November to assess the applications.

Although the closing date for applications has passed, Glenrac urges landholders to still express their interest in similar projects, as this allows us to build our database of ‘shelf projects’ that could attract future funding.

## *Tree Planting*

Although Glenrac has no current funding for tree planting we have a growing waiting list of landholders who would like to plant trees.

We are currently applying for funding through the NSW Environmental Trust and are seeking other opportunities for funding a tree planting project in the future. More on this in future newsletters.

## *Measure to Manage Workshops Bart Davidson*

Fifteen to twenty landholders from Glen Innes and the surrounding region have recently attended a workshop facilitated by Bart Davidson from System Ag, based in Moree.

Bart started the workshops by asking people to work out where they want to go with their properties, then how they want to get there. They were then asked to rank their properties into top, average and worst areas based on soils, pasture growth and production. Over the following months landholders were encouraged to do soil and feed tests in these three areas of their properties and the results have been reviewed and collated by Bart and the group.

The aim is to see if we can understand what’s missing in our soils and feed, that others may have present, and work out if we can and/or need to profitably improve it. GLENRAC has acquired funding for a 4th workshop next autumn

# WARNING ! WEEDS CAN KILL



Submitted by David Nixon, Glen Innes Severn Council Weeds Officer

## INVESTMENT RETURN FOR CONTROLLING WEEDS

The economic cost of weeds to Australia is estimated at \$4 billion per year. A high benefit to cost ratio can be achieved by intervening and eradicating new weed incursions before they become established.

Prevention and early intervention are the most cost effective techniques for managing weeds.

The return on investment can be as high as \$38 for every dollar invested in the early intervention process (AECgroup 2002).

### Aids to help in the prevention of new weed incursions:

Landholders/managers should avoid purchasing stock or fodder from contaminated areas

Have a holding paddock for stock if unfamiliar with the origin

Purchase certified seed stocks

Thorough and continual surveillance

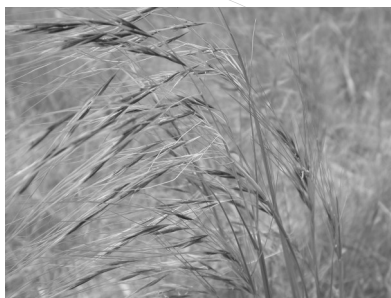
Inspection along waterways

Collect unknown specimens for identification and assessment of potential risk & invasiveness

### Noxious Weeds appearing in the Glen Innes Region this time of year

- Serrated Tussock
- Chilean Needle Grass
- Patterson's Curse and Vipers Bugloss (classified as a cousin of Patterson's Curse) both belonging to the Echium species
- Scotch/English Broom
- Nodding Thistle
- Sweet Briar

To gain the most success in controlling the above noxious weeds treatment needs to take place prior to flowering and seed set.



All landholders and or managers are obliged under the 1993 Amended Noxious Weeds Act to control Noxious Weeds on their land. Failing to do so may lead to the imposition of fines and or legal proceedings.

**For more information on weeds identification and control methods contact David Nixon, Weeds Officer at Glen Innes Severn Council on 0427669871 or landline 02 6730 2358 during office hours.**



### Highlighted points on trapping INDIAN MYNA'S

Remember:

- Avoid going near the trap when free mynas are around, unless you have to: eg letting out any natives. Be careful not to alert any free IMs with distress calls that may come from trapped IMs as they will quickly associate the trap and you with danger.

- A happy Myna will make happy calls. So keep traps supplied with fresh food and water, and it's also important to have a clean floor. The trap only has to be moved enough to provide a clean bit of turf under it on a regular basis.

- Trapping helps maintain the balance to give our natives a chance.
- Euthanasing must be quick and humane and is best done when no free IMs are around.
- The quicker a trapping program can be implemented once mynas move in the better the chance to eradicate or contain.
- Trapping needs to be combined with humans limiting the mynas' food sources.

## BIOSECURITY GATE SIGNS

Producers can now purchase their own farm biosecurity gate sign. Signs can be used to indicate to visitors the importance of following biosecurity procedures on the property. They are available for \$40 including postage and handling anywhere in Australia. For more details visit:

<http://www.farmbiosecurity.com.au/buy-a-gate-sign/>

## ACTION ON WILD DOGS

The National Wild Dog Action Plan Exposure Draft has been released and is available for viewing. The purpose of the consultation process was to build on the recent drive to manage wild dogs around the country, including the formation of the Northern Inland Pest Animal Control group.

Public feedback regarding the suitability of the Plan Exposure Draft was recently sought. To view the outcomes and for further information go to the website.

[www.woolproducers.com.au](http://www.woolproducers.com.au)

## LIVESTOCK BIOSECURITY NETWORK

A new Livestock Biosecurity Network (LBN) is being rolled out in all states and territories to encourage farmers and farming organisations to be prepared for possible exotic disease incursions and the risks to Australia's multi billion dollar livestock industry.

The new network is the brainchild of Australia's three peak farming industry organisations: Cattle Council of Australia, Sheepmeat Council of Australia and WoolProducers Australia, which have pooled \$5 million to fund the LBN after three years of intensive planning.

Regional Biosecurity Officers have been appointed in Tasmania, Queensland, Western Australia and NSW.

The NSW Officer is Alice Mabin 0488 400 207 email [amabin@lbn.org.au](mailto:amabin@lbn.org.au)

### Country web 59 now available



The latest issue of the Country Web is now available online. The magazine style publication deals with rural issues that affect country women and deals with a range of topics including profiling women of influence and upcoming events. This can be downloaded from : [www.dpi.nsw.gov.au/rwn/country-web/59-spring-2013](http://www.dpi.nsw.gov.au/rwn/country-web/59-spring-2013)

### Sheep and beef cattle farming rebate (NSW DPI)

Special promotion – for limited time only Get up to \$2000 to help your business be smarter and safer

#### Who can claim?

Sheep and beef cattle farmers in NSW – you can claim up to \$2000 if you are a sole trader or employ 50 or fewer employees, and sheep or beef cattle farming is your main business.

#### How do I claim?

Step 1 – Select and implement an eligible safety solution

Step 2 – Complete and sign the application form on page 3.

Step 3 – Send your application form, with tax invoice or receipt, to WorkCover NSW by 31st May 2014

(Tax invoice, receipt or proof of purchase must be from a registered business, and state supplier's name, address, ABN/ACN/BRN, payment date, cost, and description of product or work undertaken).

Need more information? Call 13 10 50 or email

[safetyrebate@workcover.nsw.gov.au](mailto:safetyrebate@workcover.nsw.gov.au)

## World Heritage Information Sharing Day - Washpool National Park

Collaborative management for Vertebrate Pests & Invasive Weeds

**When: Friday 6<sup>th</sup> December**

**9:45am – 2 pm**

**Where: Start at Granite Lookout**

**Washpool National Park**

Border Rivers-Gwydir CMA invite you to attend a field day focusing on strategic vertebrate pest and invasive weed management. Beginning at Granite Lookout with morning tea, and continuing at Coachwood picnic area, presentations will include:

Key findings of a wild dog radio tracking program (population dynamics & behaviours - DPI) and essential information for primary producers neighbouring Washpool and Gibraltar World Heritage Areas.

Strategic vertebrate pest animal and invasive species incentive programs currently being planned by the Border Rivers-Gwydir CMA.

World Heritage Area Outstanding Universal Values (OUV) and what they mean to the Washpool / Gibraltar Gondwana Rainforests - Office Environment and Heritage (OEH).

A flora 'talk & walk' with a focus on key flora species supporting OUV and recent research outcomes (UNE).

High altitude frogs and their importance to OUV as a key ecosystem health indicator (University of Newcastle).

Spotted tail quoll trapping and radio tracking program (OEH).

What the upcoming transition of the Border Rivers-Gwydir CMA to the Northern Tablelands Local Land Services (LLS) will mean to landholders.

The value of connectivity across our landscapes - how this can be achieved while managing the threats of pest animals and invasive weeds.

A free BBQ lunch will be provided. Please bring a chair, walking shoes and hat. Carpooling is encouraged to reduce impacts on Park amenities.

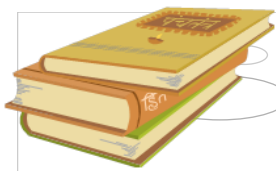
RSVP to GLENRAC 6732 3443 or Mahri Koch 0428 470 739 by

**Monday 2nd December 2013.**

### Bushfire danger periods begin

1st October marked the start of the statutory bush fire danger period in NSW; however some areas had already commenced their danger period earlier due to continuing dry conditions.

After the warmest winter on record and the latest forecasts pointing to continuing dry and warm conditions, the RFS Commissioner Shane Fitzgibbon has stressed the need to understand the increased bushfire risk and the importance of bushfire survival plans. For information on current fires and incidents as well as tools to build your bushfire survival plan visit the RFS [www.rfs.nsw.gov.au](http://www.rfs.nsw.gov.au)



## BOOK REVIEW

### Australasian Nature Photography ANZANG Tenth Collection

The bioregion of Australia, New Zealand, Antarctica and New Guinea possesses a unique natural heritage stretching back over 80 million years since the break-up of the great southern continent of Gondwana. The South Australian Museum and Australian Geographic focus on enhancing a general knowledge of this extraordinary legacy by encouraging photography of the region's nature and wilderness, and promoting an annual competition to find the Australian Geographic ANZANG Nature Photographer of the Year.

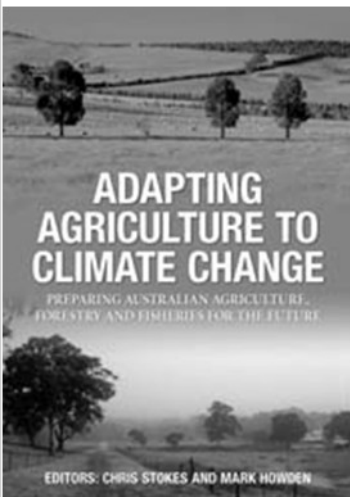
*Australasian Nature Photography: ANZANG Tenth Collection* presents the finest photographs submitted to the 2013 Australian Geographic ANZANG Nature Photographer of the Year competition. Each photograph is accompanied by technical information as well as anecdotes about how the picture was taken, which will stimulate yet further interest in the flora and fauna and their conservation in the region.

NEW Oct 2013 - CSIRO PUBLISHING - 112pp - Colour photographs Paperback - 9781486300631 - \$39.95

### Adapting Agriculture to Climate Change

This is a fundamental resource for primary industry professionals, land managers, policy makers, researchers and students involved in preparing Australia's primary industries for the challenges and opportunities of climate change.

More than 30 authors have contributed to this book, which moves beyond describing the causes and consequences of climate change to providing options for people to work towards adaptation action. Climate change implications and adaptation options are given for the key Australian primary industries of horticulture, forestry, grains, rice, sugarcane, cotton, viticulture, broadacre grazing, intensive livestock industries, marine fisheries, and aquaculture and water resources. Case studies demonstrate the options for each industry.



*Adapting Agriculture to Climate Change* summarises updated climate change scenarios for Australia with the latest climate science. It includes chapters on socio-economic and institutional considerations for adapting to climate change, greenhouse gas emissions sources and sinks, as well as risks and priorities for the future. Colour photographs, Colour illustrations. 296 pages, 262 x 185 mm Publisher: CSIRO PUBLISHING Paperback - 2010 ISBN: 9780643095953 - AU \$ 64.95

## CRRMH Photography Competition Help raise awareness for Mental Health Month!

In celebration of Mental Health Month, The University of Newcastle's Centre for Rural and Remote Mental Health (CRRMH) is running a photography competition!

NSW residents of all ages are invited to submit up to three photographs depicting this year's theme: **Changing Landscapes, New Beginnings, Open Minds**

Photos will be judged in either the adult (16years +) or youth categories and you'll go in the running to win great prizes.

Up for grabs in both the adult and youth categories.

The Director's Choice Award is presented to the most creative and original entry, as chosen by the Director of CRRMH.

The School Participation Award is presented to the school with the highest number of participants in the competition. Participants must be current students or teachers of the school and the school must be nominated on the entry form.



To enter, download and complete the entry form and email it along with your photographs to [photocompetition@crrmh.com.au](mailto:photocompetition@crrmh.com.au). Forms can be found at

[www.crrmh.com.au/News/crrmh-photography-competition.html](http://www.crrmh.com.au/News/crrmh-photography-competition.html)

## Photography Prize 2014

WetlandCare Australia invites photographers of all ages to enter our Photography Prize. The theme for World Wetlands Day 2014 is Wetlands and Agriculture.

**Don't forget our montane wetlands**

This Photography Prize gives everyone an opportunity to share their favourite wetland and take part in raising awareness about the importance of wetlands for all life on our planet.

The Prize is open to all Australian residents of any age, in all States and Territories.

**Entries close: Friday 7 December 2013**

There is also a People's Choice prize. Go to [www.wetlandcare.com.au](http://www.wetlandcare.com.au)



# Funding & Training Opportunities

## 2014 Layne Beachley Aim for the Stars Foundation grant

Layne Beachley and her Aim for the Stars Foundation, is inviting all Australian females aged 12 – 26 years who need funding to achieve goals in their sporting, academic, community, business, environmental or cultural pursuits to complete their applications online.

Any hard-working female who is committed to pursuing her passion and needs financial support deserves a helping hand and should apply for an Aim for the Stars 2014 grant by **15<sup>th</sup> November 2013**.

For more information, please contact the Aim for the Stars office: Phone: 0422600733 Email: [info@aimforthestars.com.au](mailto:info@aimforthestars.com.au)

## MLA Extension and Communication Grants

MLA offers a range of funding opportunities for red meat producers interested in participating in initiatives and events that accelerate the adoption of R&D outputs and promote sustainability and competitiveness in the on-farm sector.

MLA's Producer demonstration sites (PDS) form part of MLA's producer research support initiative. Funding is available for groups of producers keen to be actively involved in on-farm research and demonstration trials.

The purpose of PDS projects is to support groups of livestock producers and extension staff to demonstrate, develop and adopt priority research technologies and findings. In addition, the projects aim to shorten the time lag between technological innovation and on-farm use by producers.

PDS projects enable producer groups to partner with research organisations and focus specifically on trialling MLA supported R&D or addressing key research.

Who can undertake a Producer Demonstration Site project? PDS projects are aimed at groups of producers and supporting organisations such as State Departments of Primary Industry, Departments of Natural Resources, CSIRO, Universities and private consultants.

Funding support is available for producer groups involved in northern beef, southern beef, lamb and sheep meat and goat production. Applications may be submitted at any time.

Preliminary applications should be submitted a minimum of twelve weeks prior to the intended commencement of the project to enable project proposal review and, if successful, contracting prior to commencement.

### To apply, visit:

[www.mla.com.au/Research-and-development/Funding-opportunities/Producers](http://www.mla.com.au/Research-and-development/Funding-opportunities/Producers)

## Calling on Australia's young rural innovators and scientists

Innovative young Australians can now apply for grants of up to \$22,000 across a range of categories in the agriculture, fisheries, forestry, food and natural resource management sectors.

Open to Australians aged 18 to 35 years, the Science and Innovation Awards for Young People in Agriculture, Fisheries and Forestry offer grants to assist in keeping Australia's agricultural industries sustainable, competitive and innovative.

Applications for the 2014 Science and Innovation Awards close on Friday **8 November 2013**.

For further information and application forms go to [Department of Agriculture website](http://Department of Agriculture website) or email [scienceawards@daff.gov.au](mailto:scienceawards@daff.gov.au)

## In Safe Hands Toolkit Program

- Do you want to find out how to meet your 'duty of care' obligations to your volunteers?
- Is managing safety an area you find confusing and difficult?

If you answered 'YES' to either of these questions then the In Safe Hands Toolkit is for you.

Community organisations (e.g. Landcare) throughout Australia make a significant contribute to the health and restoration of the natural environment. The volunteers within these organisations require appropriate management with respect to safety on activities. Simply hoping everything will be OK and that people will use their 'common sense' is not enough. Community groups need to have systems and process in place to provide a 'duty of care'.

The In Safe Hands Toolkit is a package that is user friendly and provides resources for community groups to provide the 'duty of care' that is required.

The In Safe Hands Toolkit has been developed by Conservation Volunteers Australia with a 30 year background in managing volunteers in practical conservation activity.

The Australian Government – Department of Agriculture, is supporting Conservation Volunteers Australia in a NEW In Safe Hands Program in 2013 and 2014

[www.insafehandstoolkit.com.au/](http://www.insafehandstoolkit.com.au/)



**Australian Government**  
**Department of Agriculture**

# GLENRAC OPERATING COMMITTEE 2013/2014

CHAIRMAN - John Bavea VICE CHAIRMAN - Jim Benton

TREASURER - Sam Baker

SECRETARY - Jeff Lowien

## LANDHOLDER & DEPARTMENT REPRESENTATIVES:

Greg Chappell, Tony Holliss, Carol Harris, Winsome Quilty, Mark Pietsch, Sam Baker, Mike Norton, Norman Whitaker

**Glen Innes Severn Council** : Graham Price & Col Price & Ian Trow

**National Parks & Wildlife Office:** Peter Croft

**New England Livestock Health & Pest Authority:** Rob Munro,

**Glen Innes Local Aboriginal Lands Council:** Karen Potter

**Public Officer:** John Brien

For all questions relating to GLENRAC please contact our staff at -

68 Church Street (PO Box 660) GLEN INNES NSW 2370

Ph: (02) 6732 3443 Mobile 0427 325 901

email: [glenrac@glenrac.org.au](mailto:glenrac@glenrac.org.au) website: [www.glenrac.org.au](http://www.glenrac.org.au)

GLENRAC  
PO Box 660  
GLEN INNES  
NSW 2370



## To The Land Manager



Glen Innes Natural Resources Advisory Committee

## Coming Events:

|                   |   |
|-------------------|---|
| 6th November      | Dirt-to-Dollars Implementation Day            |
| 9th–10th November | Ben Lomond Community Empowerment workshop     |
| 12th November     | BRG-CMA Climate Change Dinner                 |
| 14th November     | Dumaresq Catchment Invasive Species Field Day |
| 21st November     | Honey Locust Meeting—Ashford                  |
| 6th December      | BRG-CMA World Heritage field day              |



Catchment Management  
Authority  
Border Rivers–Gwydir



Catchment Management  
Authority  
Northern Rivers