



Glen Innes Natural Resources Advisory Committee

**Our vision solutions for a sustainable and productive landscape.**

Where to find us

NPWS Building  
68 Church Street

### Inside This Issue

- New Funding
- Weed update
- Training opportunities
- Coming



### Events

## *GLENRAC and COUNCIL WIN PARTNERSHIP AWARD*

GLENRAC and Glen Innes Severn Council jointly won big at the recent biannual New England Landcare Awards, taking home the Partnership for Landcare Award for 2019. The Award is presented to a local or regional authority demonstrating innovation and excellence in creating partnerships with their local Landcare group. Since GLENRAC's first meeting in 1989, Council has played an active role in our Committee of Management, with a Councillor and staff representative attending meetings and participating in the development of our strategic direction.

GLENRAC Executive officer, Kylie Falconer, sees this close collaboration as providing the foundation for engaging new community members who need to access resources, information and support particularly during the current drought. "We appreciate Council's support in a number of avenues, and of note is the inclusion of GLENRAC information in the new residents' packs. This lets new property owners know what services we have to offer."

Graham Price, Director of Development, Planning and Regulatory Services for Council agrees Council has had a long and rewarding relationship with GLENRAC. "Council recognises the role it provides in delivering the coordination of a productive environmental and social resource base in our Local Government Area. GLENRAC is a highly regarded organisation within the local community, particularly the farming community, with over 800 members and Council looks forward to continuing its working relationship with GLENRAC into the future."

Council delegate to the GLENRAC Board, Cr Colin Price, believes the continuing growth in membership of GLENRAC reflects the ability of the Executive Board and the genuine respect for the organisation by funding bodies.



"The drought support funding received by Council, and distributed to GLENRAC via the Australian Drought Communities Programme, has been a key recent collaboration between

*At left:* GLENRAC Landcare coordinator Lucy Faithfull, Glen Innes Severn Council Mayor Cr Carol Sparks, and GLENRAC Board secretary Tony Corcoran share the honour of the award last month.

# GLENRAC Matters

Hello Readers,

There has been little change in the seasonal conditions since our last newsletter, creating new challenges for property management. The team at GLENRAC has been tailoring our events to meet your needs. If you've missed an event but would like to know more, give the office a call. Of note has been the July Farmer Update, covering changes to financial and income assistance for farming businesses. A summary of this event has been in recent email newsletters.

We farewelled Kelly Walsh at the end of June as she has moved on to new opportunities at Scone. Thanks Kelly for your hard work and efforts over the last 3.5 years!

We are continuing our Smoko with a Friends events over coming months - hope to see you at your local Smoko event.

Regards,

## Drought Relief for Farmers

### New additions to the Emergency Drought

**Transport Subsidy** Guidelines include transport of farm chemicals, fertiliser and /or seed now eligible items. For invoices dated from 1 July 2019 for a B-Double or larger, the transport subsidy will now be paid at a rate of 50% of the total amount paid to the carrier, to a maximum of \$7.50 which equates to a maximum subsidy rate of \$3.75.

The NSW Government's **Drought Assistance Fund** is offering \$50,000 interest-free loans to primary producers to implement systems and management practices that enhance the sustainability of their farm business. The loan term is seven years and there are no repayments required in the first two years. This loan will fund:

- the transport of stock, fodder and water genetic banking of breeding herds
- installation of on-farm fodder and water infrastructure
- activities that promote profitability and resilience as a result of the on-farm investment (NEW eligible item addition).

Contact the RAA on 1800 678 593.

Website address: <https://www.raa.nsw.gov.au/>

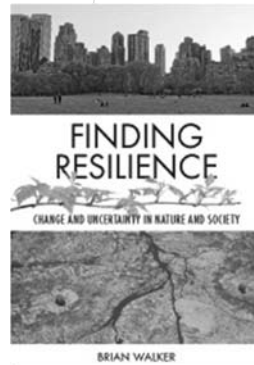
**RURAL AID** is providing assistance to access livestock fodder and household financial assistance on a case by case basis. Register to be eligible for assistance by calling 1300 327 624.



**Mental Health Line**  
**1800 011 511**

The NSW Mental Health Line  
Connecting you with the right care  
24 hour service across NSW  
Calls from landlines are free but charges may apply from mobiles.

NSW Health



## New Book Releases

### Finding Resilience

Brian Walker

An analysis of how ecosystems, societies and people cope with disturbance and adversity.

Paperback | March 2019 | \$ 59.99

ISBN: 9781486310777 | Publisher: CSIRO Publishing

### COMMUNITY BASED CONTROL OF INVASIVE SPECIES

One of the most promising approaches to managing invasive species is voluntary citizen stewardship. This book is based on five years of research by leading scholars in natural resource and human behavioural sciences.



Hardback - June 2019 - AU \$99.99

Publisher: CSIRO Publishing

### BACK ON TRACK

Bestselling author James Knight tells Bernie Shakeshaft's story and the stories of those whose lives he has saved. It is a powerful reminder to never give up: how one man and his dogs are changing the lives of rural kids.

Paperback - July 2019

Publisher: Hachette Australia

AU \$29.99 ISBN 9780733642128



# GLENRAC Projects Update

## RAMSAR Project gears up for Year 2

The RAMSAR project at Little Llangothlin Nature Reserve has kicked Year 1 and is now preparing for years 2 to 5. Over the coming years, GLENRAC will partner with Local Land Services and National Parks and Wildlife Service to provide field days at the lagoon, and pest animal assistance to landholders managing foxes, pigs, and rabbits.



When it rains, we will celebrate the return of aquatic life and water birds to the lagoon. In the meantime, annual surveys of the reserve will help determine the most effective ways to manage this special site.

## Environmental Trust Rehabilitation Grant

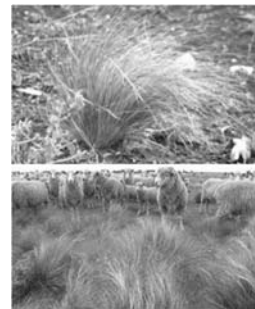
GLENRAC has won a 2 year grant for addressing stream bank and gully erosion, and biodiversity loss through onground works that will include bank stabilisation, fencing, and revegetation of native ecosystems. Eight local properties will benefit from this funding.

## Woodland Birds of New England

A great day was had by all on the morning of 3 August when 11 enthusiastic people met at Desmond and Sandy Fitzgerald's property at Yarraford to count birds as part of the Regent Honeyeater survey.

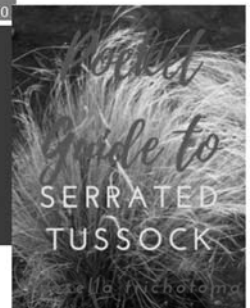


Alas, Regents Honeyeaters were not spotted however participants had a really pleasant morning searching for bird species and other wildlife. Key an eye on our website and Facebook page for more woodland bird events.



**SERRATED TUSSOCK**  
HOW TO ID ON THE GO

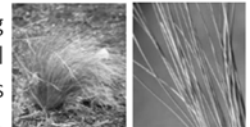
- Tussocky plant, up to 60cm tall.
- Thin tightly rolled leaves, rolls like a needle between fingers
- Serrated leaves - not hairy, rough when running fingers down leaves



IDENTIFY THIS WEED ON THE GO

## Invasive Species Projects Update

GLENRAC's funding to run training events highlighting the ecology, control and management of invasive species such as Indian Myna Birds, Feral Cats, Serrated Tussock and Fireweed will continue through the following months as summer approached. Pick up the latest glove box guide to identifying serrated tussock at our front counter now.



BEST INTEGRATED MANAGEMENT STRATEGIES

## Identify the Indian Myna



### Indian Myna

- Yellow beak, eye patch and legs.
- Brown body, black hooded head, black neck and tail.
- White wing patches visible in flight.
- Walks upright (struts)



### Noisy Miner

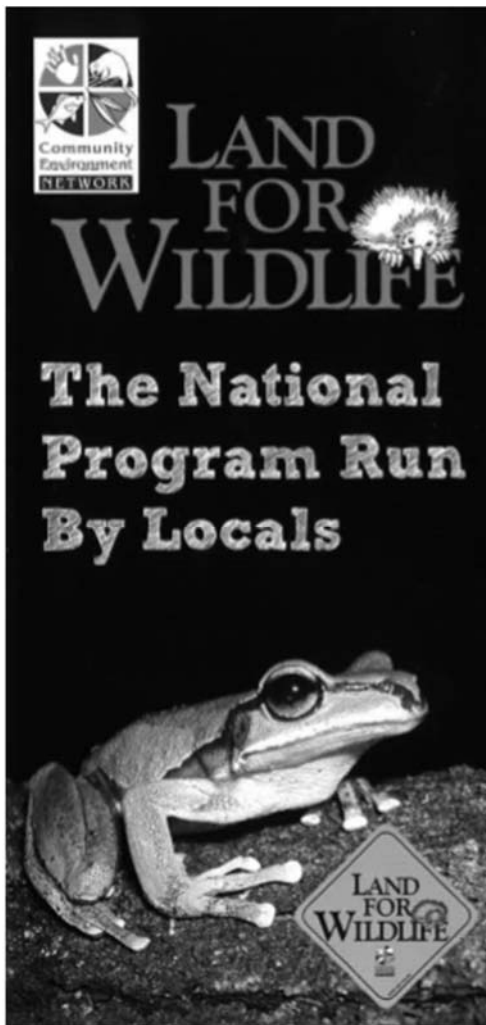
- Yellow beak, eye patch & pale legs.
- Light grey body, black crown
- Grey wings with olive tinged edge.
- On the ground the Noisy waddles.



## 2020 to be a Big Year for Glen Innes Rural Youth Club

November 28, 1923 to November 28, 2020: 92 years since the Glen Innes Rural Youth Club (GIRY) was formed under the banner of the Junior Farmers organization to promote the extension of information and agricultural ideas into households. Nearing 30 members under the age of 25, and supported by a strong band of mature age members, parents and supporters, GIRY is looking to provide an even greater adventure for young people interested in all things rural, their local community and learning what is needed to move on to higher education, careers, and business. Many past members across NSW have become outstanding rural operators, community and agri-business leaders, and heads of world agricultural organisations.

GIRY members are hoping to upgrade the Animal Nursery facilities and historic Yarraford Hall at the Glen Innes Showground as a highlight of 2020. Anyone seeking further information on the Club should contact Sarah Winter on 098 967 664 or email [ruralyouthgleninnes@outlook.com](mailto:ruralyouthgleninnes@outlook.com).



## Join the 'Land for Wildlife' scheme

If you would like to conserve your property's special features, you can join Land for Wildlife. The scheme is one way you can help conserve and manage wildlife and native vegetation on your property while enhancing agricultural practices.

Land for Wildlife in New South Wales is coordinated by the Community Environment Network (CEN) in partnership with the Office of Environment and Heritage (OEH). The CEN works GLENRAC which runs local Land for Wildlife Programs.

### What is Land for Wildlife?

Land for Wildlife is a voluntary property registration scheme for landholders who wish to manage areas of wildlife habitat on their property. It encourages and assists landholders to include nature conservation along with other land management objectives. Land for Wildlife is free to join and is not legally binding. Registration in the scheme will not change the legal status of a property. Regional delivery by GLENRAC includes:

- ◆ site assessments;
- ◆ advice on suggested management strategies and actions for the property, and,
- ◆ support and encouragement for landholders to carry out nature conservation on their land.

### What are the benefits for members?

Land for Wildlife supports people who want information about wildlife management on their property and provides opportunities for landholders to share their experiences with other landholders and partner organisations through:

- ◆ information about the role of wildlife and native vegetation in sustainable agriculture to control pest species, provide shade and shelter, manage salinity and control wind and water erosion;
- ◆ membership links and contacts with like-minded people;
- ◆ notes and news on management issues, and,
- ◆ access to education programs and activities.

Call GLENRAC to talk about a Land For Wildlife expression of interest.

## Pulse of the Earth

### A Festival of Regeneration

Inherent within the festival is "Groundswell" - the final Bingara event for "Artist, Farmer, Scientist" collaboration with lots of displays and workshops around the subject of Regenerative Agriculture. The festival will be held in Bingara from 6 to 8th September.

# Fireweed is on the Move



Fireweed is a highly invasive and opportunistic weed which can quickly colonize disturbed areas, including roadside and overgrazed pastures. To reduce introducing new fireweed to your property, do not purchase hay, silage or grain produced in contaminated areas and always check feedout areas and paddocks for fireweed plants.

Fireweed can be controlled through hand pulling (as plants are shallow rooted), chemical application, grazing strategically (sheep and goats can graze for short periods where other feed is available in pasture) and pasture management. A pasture with at least 90% ground cover is far less susceptible to invasion by fireweed.

*Below image:* Fireweed clumps in flower.



Fireweed is established in eastern areas on the Northern Tablelands. It is a serious pasture weed on the east coast of Australia from Victoria to Central QLD, and isolated areas in inland NSW. It originally comes from south eastern Africa and can take over pastures. Fireweed produces pyrrolizidine alkaloids and livestock that eat it get liver damage, which causes loss in condition and can lead to death. The damage is irreversible and gets worse the more fireweed consumed. Cattle and horses are more prone to this than sheep and goats.

Fireweed **flowers** (image above) are small, bright yellow, daisy-like with usually 13 petals. **Leaves** are bright green, fleshy and narrow. **Seeds** are light, fluffy and easily carried long distances by the wind, and shorter distances by livestock. In a season each plant can produce up to 30,000 seeds.

## New England Weeds Authority Biosecurity Officers (Weeds) from left to right:

Josh Robb Matt Benham Rachel Betts Josh Biddle Trent McIntyre James Browning (Senior Biosecurity Officer)



New England Weeds Authority Weed Officers are on hand to assist with your noxious weed identification, management and control. Visit [www.newa.com.au](http://www.newa.com.au) or Phone 6770 3602



# Funding & Training Opportunities



## Farm Household Allowance

This allowance is a payment for farming families in financial hardship. It can help with your household bills and financial circumstances. To be eligible, you need to be a farmer who spends a major part of your time and capital working on the farm, or be the partner of a farmer who meets mutual obligation requirements.

Call Farmers hotline on 13 23 16 or the Rural Financial Counselling Service on 1800 940 404 or Stuart Brummell on 6732 3325.



## Free support for farmers and community members from Healthwise New England North West

Person centred psychological support is provided for people impacted by the ongoing drought.

Phone 1800 931 540 or talk with your general practitioner for a referral.

## Skills training for drought affected farmers and businesses

The NSW Government is subsidising skills training for farmers and regional businesses impacted by the drought and looking to transition into new or updated career opportunity. Training may be fully subsidised under the NSW Government's Smart and Skilled Program.

Meet Smart and Skilled eligibility criteria Individuals must be:

- 15 years old or over and no longer at school
- living or working in NSW and reside in a postcode within Regional NSW, and,
- be a business owner, farmer or agriculture sector employee in a drought affected area.

For more information call 13 28 11 or visit [training.nsw.gov.au](http://training.nsw.gov.au).

## Emergency Water Infrastructure Rebate Scheme



This rebate is 25 % of the cost of purchase, delivery and installation of water infrastructure for animal welfare needs. The maximum that can be claimed is \$25,000. Allocated funding of \$12 million. Back dated to 1 July 2018. Applications close 30 June 2021.

For more information visit [www.raa.nsw.gov.au](http://www.raa.nsw.gov.au) or Phone 1800 678 593.

## Nominate for Australia Day 2020 Awards NOW

Nominations are now being accepted for our 2020 Australia Day Awards across Glen Innes Severn LGA. You know someone who deserves recognition for their contributions to our community. There is an organization, an emergency services volunteer, and an event of this past year that has made an outstanding impact on our community – particularly in relation to the drought. Take the time to nominate.

Check out the Council website [www.gisc.nsw.gov.au](http://www.gisc.nsw.gov.au) and the Australia Day Committee of Glen Innes Severn Council Facebook page to download nomination forms. Get your hard copies at village post offices and the Town Hall Council office.

Categories are:

- ◆ Citizen of the Year
- ◆ Young Citizen of the Year
- ◆ Emergency Services Volunteer of the Year
- ◆ Community Group of the Year
- ◆ Community Event of the Year
- ◆ Environmental Citizen of the Year

**Nominations will be accepted until Tuesday, 3 December 2019.**



# Funding & Training Opportunities

## 2020 Charity Brunch Community Grant Applications now open

Grant applications are now open for the Charity Brunch Community Grant program. The aim of the project is to bring together community and district rural residents at events that share information, offer social inclusion and provide physical and mental health education in an informal setting to help enhance farmer resilience and strengthen community connection.

The mission of the Charity Brunch is to support rural communities with the infrastructure to better the overall emotional, health and general well-being of the community. Any questions regarding the Grant Application process should be directed via email to: [Charitybrunch@rasnsw.com.au](mailto:Charitybrunch@rasnsw.com.au). Applications will close at 5pm on Friday 25 October 2019.

## Stronger Country Communities Fund Round 3

The NSW Government's Stronger Country Communities Fund, Round Three is now open directly to not-for-profits and community organisations. Round Three will provide an additional \$100 million for community projects in regional NSW, with at least \$50 million for youth-related projects.

Applications close 5pm, Friday 27 September 2019.

**Funding Website:** [www.gleninneshighlands.com/grant-and-funding-opportunities-bid-blast-2/](http://www.gleninneshighlands.com/grant-and-funding-opportunities-bid-blast-2/)



## Young Farmer Grants

The Young Farmer Business Program has announced *Group's Vault Grant* for groups who support young farmers and fishers, locally and regionally in NSW to deliver training for their members.

A grant of up to \$10,000 is available per eligible group and examples of projects include farm tours, commercial fishing business tours, workshops, events, business skills coaching, training and guest speakers.

Applications close 31 August 2019.

Telephone: (02) 6881 1238 or

email [young.farmer@dpi.nsw.gov.au](mailto:young.farmer@dpi.nsw.gov.au)

## National Rural Women's Coalition RRR Women's Canberra Muster Leadership Program.

Have you applied for The National Rural Women's Coalition (NRWC) RRR Women's Canberra Muster Leadership Program? The NRWC RRR Women's Canberra Muster 2019, is now accepting applications from women living in rural, regional and remote Australia that are 40 years.

It promises to be an inspiring and empowering 4 days with outcomes that will change the way you think about leadership! NRWC will fund accommodation, meals, and the residential training program while attendees are in Canberra. Travel arrangements to and from Canberra need to be made by the attendee.

Applications close 13 September 2019. Call 02 6391 3620 or email [rural.women@dpi.nsw.gov.au](mailto:rural.women@dpi.nsw.gov.au)

## Apply now for the 2020 Science and Innovation grants

Australia's young agricultural innovators, scientists and researchers wanting to make a difference in agriculture are invited to submit their innovative agricultural research project ideas for a chance to receive a share in up to \$242,000 in grants. The Award recipients will be publicly presented as part of the Australian Bureau of Agricultural and Resource Economics and Sciences (ABARES) Outlook 2020 conference in Canberra.

Innovators aged 18–35 year old are encouraged to undertake new and creative research to help agricultural industries to overcome industry challenges and to realise its potential. Applications close at 5pm AEST Friday 4 October 2019. For more information visit [www.agriculture.gov.au/abares/conferences-events/scienceawards](http://www.agriculture.gov.au/abares/conferences-events/scienceawards)

## Chemical Clean Out

Drop off at Glen Innes Waste Management Facility for FREE on

**Tue 03/09/2019**

**It's time for a Chemical CleanOut**

You can drop off for free:

- Household appliances
- Paint
- Refrigerators and A/C units
- Car and household batteries
- Car and household chemicals
- Household chemicals

**Tuesday 3 September 9am to 4pm**

Glen Innes Waste Management Facility, 88 Redburn Road, Glen Innes

EPA NRWC Household Chemical CleanOut

# GLENRAC OPERATING COMMITTEE 2018/19

**CHAIRMAN** - John Bavea

**VICE CHAIR** - Ian Lockwood    **TREASURER** - Sam Baker    **SECRETARY** - Tony Corcoran

## LANDHOLDER & DEPARTMENT REPRESENTATIVES:

Andrew Campbell, Chris Leahy, Jane Munro, Jim Benton, Mark Donovan, Mike Norton, Sandy Fitzgerald, Julie Firth.

**Glen Innes Severn Council** : TBA

**Department of Primary Industries** : Carol Harris ,

**National Parks & Wildlife Office:** Dr. Peter Croft

**Glen Innes Local Aboriginal Lands Council:** Jayden Potter

**Public Officer:** Mark Donovan

For all questions relating to GLENRAC please contact our staff at -

68 Church Street (PO Box 660) GLEN INNES NSW 2370

Ph: (02) 6732 3443

Mobile 0427 325 901

email [kylie@glenrac.org.au](mailto:kylie@glenrac.org.au)

GLENRAC  
PO Box 660  
GLEN INNES  
NSW 2370



## To The Land Manager

This activity is part of the Local Landcare Coordinators Initiative



**Local Land  
Services**

The Local Landcare Coordinators Initiative is funded by the NSW Government, and is supported through the partnership of Local Land Services and Landcare NSW.



**Landcare**  
New South Wales



Glen Innes Natural Resources Advisory Committee

## Coming Events:

29 August    Focus Event: Prospects for Conservation, Glen Innes and District Services Club, 7pm—9pm

3 September    LLS Rabbit Control Field Day at Linwood TSR, 9.30am—2 pm

4 September    Tackling Technology for Producers at Glen Innes Sale Yards Canteen 10—11.30am

12 September    Fit Farmers event at Emmaville, 10.30am—1pm

13 September    Good, Bad, the Ugly of Invasive Grasses at Red Lion Tavern Glencoe, 10:30am to 12 noon

18 September    GLENRAC Annual General Meeting at Glen Innes and District Services Club, 7pm—9pm

27 September    Chilean Needle Grass Field Day at Dundee Hall, 10am—12 noon

10 October    Vertebrate Pest and Canid Pest Ejector Training at Glen Innes, 9am [venue to be confirmed]

10 October    Smoko with Friends at Wellingrove

15 October    International Rural Womens' Day event [Time and place to be advised]

23 October    Regent Honeyeater Field Day at Emmaville, 8.30am