

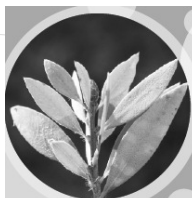
# GLENRAC

# Newsletter

Oct/Dec 2018



Glen Innes Natural Resources Advisory Committee



## GLENRAC

### Strategic Plan 2015 - 2020



**GLENRAC's**  
vision is  
solutions for a  
sustainable and  
productive

Where to find us -  
National Parks &  
Wildlife Services  
Building, 68 Church  
St, Glen Innes

#### Inside This Issue

- New Books
- New Funding
- Drought information
- Land for wildlife
- Weed update



Many Hands, One Voice  
WILSON, WILSON, WILSON, WILSON



## Summary - Annual Review 2017-2018

*GLENRAC has a vision to provide solutions for a sustainable and productive landscape.*

2

### MEMBERSHIP

39%

Membership has increased by 183 members



### EVENTS

36 events  
861 participants

(average of 24 participants at each event)



### SUPPORTED

9 Landcare Groups



### GRANTS

We have received  
9 new grants valued at  
\$162,228



### SOCIAL MEDIA

60% increase

Our Facebook "Likes" has increased by 143



74 followers

1 Instagram account

250% increase

Website visits 8718

### PARTNERSHIPS

51 Partnerships maintained



### STAFF

3 Part time staff, equivalent of 1.2 full time



### PRODUCTS

- 4 printed newsletters
- 38 e/flashes sent (email newsletters)
- 1 Organisation Capacity Statement - committee and staff



### TRAINING

1 training event 'Governance Training' attended by the Committee of Management Members



GLENRAC INC  
PO BOX 660, GLEN INNES, NSW, 2370 - T: 02 6732 3443 W: [www.glenrac.org.au](http://www.glenrac.org.au)

GLENRAC PO Box 660 NPWS Building 68 Church Street GLEN INNES NSW 2370

Tel: 02 6732 3443 Mob: 0427 325 901 e-mail: [glenrac@glenrac.org.au](mailto:glenrac@glenrac.org.au) Web: [www.glenrac.org.au](http://www.glenrac.org.au)

# GLENRAC Matters

Hello GLENRAC members,

Thanks to all of you who have been supporting us at events, on email and on the phone in the last few months. It has been a very busy time for us in the office and out at events. Our AGM was well attended this year with the Mayor, Steve Toms overseeing the nominations of new board members. This year we welcome in Julie Firth on to the committee of management and farewell Rose Gettens, thank you for your support at board level—it was much appreciated. There are events coming up—see back page, and various funding opportunities as well as other information peppered throughout the newsletter. We thank you all again for your encouragement to us to be part of our vision “Solutions for a sustainable and productive landscape”.

Regards, GLENRAC Staff—Kylie, Lucy, Jennie & Kelly

## New Books

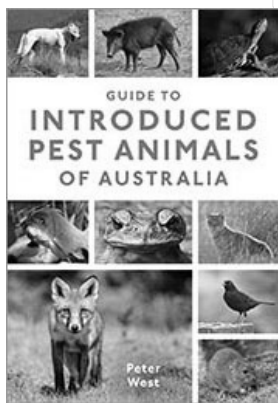
 **CSIROPUBLISHING**

Telephone: Reception | [03] 9545 8400  
Orders within Australia | 1300 788 000



### RECOVERING AUSTRALIAN THREATENED SPECIES

A Book of Hope  
Edited by: Stephen Garnett, Peter Latch, David Lindenmayer, John Woinarski  
Paperback - March 2018 - AU \$59.95. An inspiring showcase of successful approaches and implementation methods for conservation.



### GUIDE TO INTRODUCED PEST ANIMALS OF AUSTRALIA

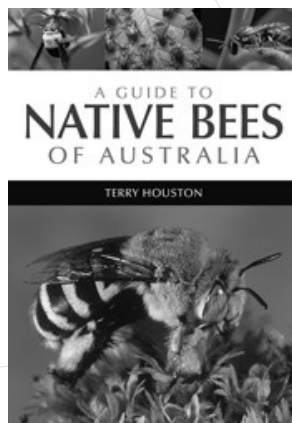
Peter West. Paperback - April 2018 - AU \$39.95  
A practical guide for the identification of introduced pest animals and management information. Australia's introduced vertebrate pest species cost at least \$1 billion annually in economic, environmental and social impacts.

### A GUIDE TO NATIVE BEES OF AUSTRALIA

Terry Houston Paperback - August 2018 - AU \$49.99

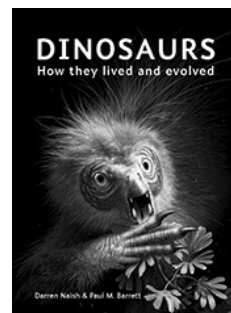
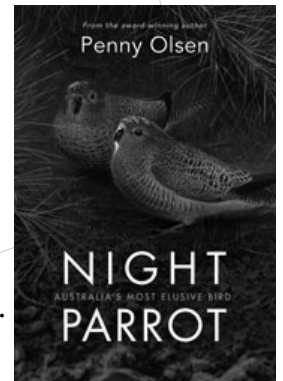
An illustrated introduction to the estimated 2000 species of Australian bees.

Bees are often thought of as yellow and black striped insects that live in hives and produce honey.



Australia's Most Elusive Bird **Penny Olsen**  
Paperback - September 2018  
- AU \$49.99

The competitiveness and secrecy, the triumphs and adventures of the history of the Night Parrot and its followers.



## DINOSAURS

How They Lived and Evolved  
**Darren Naish, Paul Barrett**  
Paperback - September 2018 - AU \$29.99

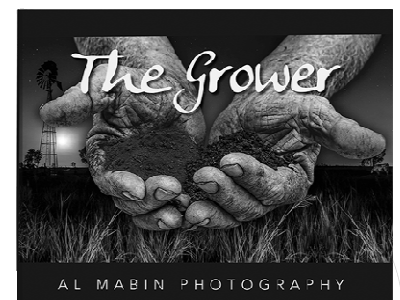
## Rural Bookshop

Ph: 1 800 025 308 - Toll Free

The Grower series give a photographic and informative insight into each industry and how we farm today. You

can't help but feel the passion that the farmers have for what they do, understand a little of their hardship, but see that they strive to succeed in an ever challenging environment.

\$116.00 Author: Alice Mabin; Publisher: Alice Mabin; Format: Hardback; ISBN: 9780646969831; Product Id: 6012



# GLENRAC and Members Successes

## GLEN INNES NATURAL RESOURCES ADVISORY COMMITTEE WINS \$99,000 ENVIRO GRANT TO PLANT 19,000 NATIVES

Northern Tablelands MP Adam Marshall says a \$99,330 grant to a Glen Innes land conservation and management group will see some 19,000 native trees and shrubs planted across the district next year.

Mr Marshall has announced the funding for the Glen Innes Natural Resources Advisory Committee, or Glenrac, to restore biodiversity and on-farm habitat on 12 different farming properties.



Mr Marshall said GLENRAC would manage the project while the landowners would be involved in ground preparation and ongoing control.

The project manager Jennie Coldham has told the MP that the disability services and support organisation Glen Industries will also help with the plantings of the seedlings while the fencing, weed control and ground coordination and management, would be the responsibility of the individual landholders.

“They are all grazing properties and mostly larger properties and the numbers of natives we’ll be planting ranges from 400 to 2000 plants per property,” Jennie said.



Mr Marshall said the 19,000 plants were a mix of eucalypt, acacias and bottlebrushes, depending on where the sites were.

“Some of those sites are in Ben Lomond and are different to those in Deepwater, so that will determine the nature of the natives to be planted,” Mr Marshall said.

“This is a real boost to local environmental restoration and will increase the amount of available native habitat across the Glen Innes district. The new plantings will assist in providing habitat for flora and fauna species across a highly fragmented landscape. Let’s hope we can get some decent rain soon to give us a good runup to

when the plantings get underway.”

Miss Coldham said they were aiming to plant in Spring next year, 2019, but the land conservation group was encouraging landholders to start their ground preparation now, or when it rains.

The project has identified 35 sites on those 12 properties for the plantings and includes species from two threatened ecological communities, namely New England Peppermint grassy woodlands and White Box, Yellow Box and Blakely’s red gum grassy woodlands.

Mr Marshall said the funding came via the NSW Environmental Trust’s Restoration and Rehabilitation Grant Program and the GLENRAC project fitted with the aim of that program to protect, restore and enhance the local environment.

He said the plantings would result in significant environmental benefits for the local community.

GLENRAC is one of 46 community groups and government entities across NSW successful in sharing the funding pool under this year’s program.

It was formed in 1989 by a group of people interested in land management and land conservation issues and says its vision today is to provide solutions for a sustainable and productive landscape while initiating and coordinating action for landholders and the community to manage and



maintain the natural resource base of the region.

Jennie welcomed the funding, saying GLENRAC would not have the capacity to undertake projects like this one without such Landcare initiatives provided by the State Government.

**MEDIA: Adam Marshall 0429 440 054**



## September 2018 edition

Contact: Stuart Brummell, Rural Financial Counsellor - Glen Innes Phone: 02 67323325  
Mob: 0448 035 152  
Email: stuart.brummell@rfcsnr.org.au

### **Freight Rebates:**

50% rebate for the freight of fodder, water and livestock to sale, slaughter or agistment. Back dated to January the 1<sup>st</sup> 2018 and funded until 30 June 2019. Rebates up to \$20,000 a year and to a total of \$30,000 for eligible businesses.

**Drought Assistance Fund:** Interest free loans of up to \$50,000 are available to eligible primary producers to assist in implementing systems and management practices that enhance the sustainability of their enterprise. The loan is for a term of seven years, the first two years repayment free. The loan will assist with funding;

- Transport of livestock, transport of fodder and/or water
- Water infrastructure and fodder storage infrastructure, and
- Banking of genetic material of livestock.

NSW Rural Assistance Authority. Telephone 1800 678 593

### **Farm Innovation Fund Loans:**

Concessional loans are now available from the NSW Rural Assistance Authority to assist with drought preparedness, environment, farm infrastructure and natural resources works. Loans up to \$250,000, up to a 20 year term, current interest rate is 2.5% which is fixed for the term of the loan.

**Farm Business Skills:** Professional Development Program- NSW Dept. of Primary Industries. The program has \$45 million over 5 years for vocational training and farm business planning. The program will contribute up to 50% of the costs for eligible courses, up to a maximum of \$5,000 for the first person in the business, and a total of \$9,000 for all members of the business over a 5 year period. Closes July 2019.

### **Concessional Loans: Regional Investment Corporation**

Drought and Farm investment loans to assist with preparation for drought and recovery from drought. Loans can refinance existing debt or access new debt for operating expenses. Loans are available up to \$1,000,000 at an interest rate of 3.58%.

### **Income Support for Farmers:**

**Farm Household Allowance:** The Farm Household Allowance (FHA) will help farmers with their daily living expenses, and is available to farmers Australia wide, **without** the need for a drought declaration. This allowance will provide eligible farmers and their partners with up to four years of income support. This payment is equivalent to the Newstart Allowance and is paid fortnightly. Recipients will receive an additional \$4000 Activity Supplement for professional advice or training, and will be supported by case managers as they undertake these activities to improve their situation and prepare for the future. The new total farm net asset upper limit is \$5,000,000.

Dept. Human Service - Drought and Farmer Assistance  
**Hotline 13 23 16—ring and make an appointment in Glen Innes, very helpful.**



### **CWA Drought Aid Fund:**

Assistance to meet household expenses for drought affected families, up to a **maximum of \$3,000 per family/ household.** Expenses can include grocery bills, vehicle maintenance, school, electricity, rates, telephone, medical treatments etc. **Ph: 8337 0200**

### **Farmer Support**

The Salvation Army is on the ground supporting families and communities affected by the droughts.

If you are currently living in a drought-affected area and would like to find out what support is available, we encourage you to reach out.

**HOW? Phone 02 8757 8088**



### **Mental Health Line 1800 011 511**

*The NSW Mental Health Line  
Connecting you with the right care  
24 hour service across NSW*

Calls from landlines are free but charges may apply from mobiles.



Health

# New! Land for wildlife

LAND  
FOR  
WILDLIFE

If you would like to conserve your property's special features, but don't want to sign a legal agreement, you can join the Land for Wildlife Scheme.

Significant natural and cultural features of the environment exist across the whole landscape. Joining Land for Wildlife is one way you can help conserve and manage wildlife on your property and contribute to the conservation of our unique Australian native plants and animals.

Land for Wildlife in New South Wales is co-ordinated by the Community Environment Network (CEN) in partnership with the Office of Environment and Heritage (OEH). The CEN works with interested local organisations who run local Land for Wildlife Programs. For information about the State Co-ordination and running Land for Wildlife in your local area contact the CEN—GLENRAC are now regional Partners.



## What is Land for Wildlife?

Land for Wildlife is a voluntary property registration scheme for landholders who wish to manage areas of wildlife habitat on their property.

Land for Wildlife encourages and assists landholders to include nature conservation along with other land management objectives.

Land for Wildlife is free to join and is not legally binding. Registration in the scheme will not change the legal status of a property.

## Delivery of Land for Wildlife

In NSW, a community-based approach is taken for Land for Wildlife, with regional delivery carried out by non-government organisations, community groups and local councils. These regional arrangements are co-ordinated state wide by the Community Environment Network (CEN).

Regional delivery includes:

- site assessments
- advice on suggested management strategies and actions for the property
- support and encouragement for landholders to carry out nature conservation on their land.

## What are the benefits for members?

Land for Wildlife supports people who want information about wildlife management on their property and provides opportunities for landholders to share their experiences with other landholders and partner organisations, through:

- information about wildlife management
- information about the role of wildlife and native vegetation in sustainable agriculture to control pest species, provide shade and shelter, manage salinity and control wind and water erosion
- membership links and contacts with like-minded people
- notes and news on particular management issues
- signs for property owners who have properties registered with the scheme
- access to education programs and activities.

## Join Land for Wildlife in your region

Land for Wildlife is available in a number of regions. Contact GLENRAC for information 02 6732 3443

Opportunities for members include  
Conservation Partner grants of up to \$2000  
per year for 3 years  
Ring 1300 992 688 for more information



# Weed risks during drought

A local rural merchandiser was discussing the movement of stock feed with our Biosecurity Officers today. He mentioned that they have been sourcing feed from South Australia and Far North Queensland. Unfortunately these stocks are quickly running out and they are now in discussions with suppliers in Western Australia. From a weed perspective, this means we may be importing weeds from anywhere on the Australian mainland. Although feed movement is a necessary risk there are a number of strategies we can put in place to help ensure this difficult period is not compounded by years of costly and labour

intensive weed control into the future.

## Sacrifice Paddocks.

Where possible feed out imported stock feeds

in the same location. If we are introducing weeds in stock feed, particularly hay, it is best we limit the area over which these weeds are spread. If there are few feeding locations it is easier to be on the lookout for the growth of unfamiliar species when conditions improve.

Vehicle Hygiene. The trucks that are transporting this stock feed have also been on properties in the source location. Vehicles and agricultural equipment have always been a major vector for transporting weeds. Be mindful of how clean these vehicles are when they enter your property and again be observant for new species in places these vehicles have been.

Bare Soils. The reduction in vegetative cover during

prolonged dry spells provides great opportunity for new species to become established. As we often suggest, the best way to control the introduction of weeds to a property is by having a healthy pasture with good ground coverage. Unfortunately that is not always possible.

New England Weed Authority (NEWA) are aware of the stresses that are put on our agricultural community during these times. With sparse pastures, hand fed stock and lambing at this time of year we have chosen to limit our property inspections until conditions improve. Also, it is not ideal to undertake herbicide application whilst plants are under such water stress. Remember that most of the weeds we currently control in the New England were introduced through stock feed and vehicle movements. Vigilance now may well have a great impact on the weeds we have to control in the future. And remember, NEWA staff are here to help.



Above: Parthenium weed, just one of the undesirable species on our doorstep.

**NEWA: Weed Officers are on hand to assist with your noxious weed identification, management and control.**

Visit [www.newa.com.au](http://www.newa.com.au) or Phone 6770 3602



Glen Innes Severn  
Luke Turner  
0438 501 286



# Funding Opportunities and coming events

MLA invites applications for sponsorship of producer events

Tue 25/09/2018 - Fri 12/10/2018

Meat & Livestock Australia (MLA) is inviting applications for

sponsorship for events to be held

between 1 January - 30 June 2019.



Applications for event sponsorship up to \$10,000 must be received by 5:00pm on 12 October 2018.

<https://www.mla.com.au/news-and-events/events-and-workshops/request-mla-sponsorship/>

**LEADERSHIP SCHOLARSHIP - The 2018 NRWC RRR Canberra Muster** is a leadership development program specifically for rural, remote and regional (RRR) women aged between 25 - 40. Three day residential leadership program in Canberra. Applications close 28th October 2018.

For more



*Creating Community  
Resilience and  
Wellness through  
Women's Leadership*

**CANBERRA MUSTER**  
CANBERRA 26-28 NOV 2018

information <https://www.nrwc.com.au/what-s-on/e-leaders-programs/2018-e-leader-rrr-canberra-muster>

## Seven News Young Achiever Awards

Designed to acknowledge, encourage and most importantly promote the positive achievements of all young people in NSW & the ACT up to and including 29 years of age.

1. It is free to enter and so easy to do
2. Winners will be taking home \$1,000 cash, a \$1,000 Bartercard account and will also receive a magnificent trophy
3. A media release is sent out for every nominee that enters, in turn increasing promotion for the nominee
4. Should the nominee become a semi-finalist or a finalist, we will promote them on our social media pages and further media releases will be sent to their local papers
5. Everyone who is entered in the Awards receives a certificate of achievement

<https://docs.google.com/forms/d/>

## Community Connect - Media Messaging Workshop

Mon 15/10/2018

GLENRAC will host our 4th International Rural Women's Day event with a workshop with Stephanie Dale of The Write Road.

This workshop is open to all women who live and work in the our rural community.

This event is free to attend.

RSVP: 02 6732 3443

or [kylie@glenrac.org.au](mailto:kylie@glenrac.org.au)

RSVP for 18 October Bus to see **Wongwibinda Exclusion fence**. Contact GLENRAC (02) 6732 3443



## Biodiversity & Climate Change Roadshow - Armidale

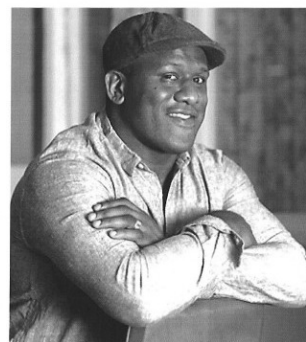
Date - Thursday 25th October 2018 9:00am to 3:00pm, Free to attend.

How can we conserve species from the impacts of climate change? Do you know how to find and use available climate information to support adaptation planning for species and ecosystems in your local region?

Phone 02 9850 6298 to register

## GUYRA MEN'S HEALTH NIGHT

Date: 19<sup>th</sup> October 2018



Location: Ben Lomond Hall  
(1233 Ben Lomond Road, Ben Lomond)  
Time: 6pm to late  
RSVP: 5<sup>th</sup> October 2018

**Raffle Prizes:** Weekend trip to Sydney for 2 people (REX flights, accommodation at Rydges and 2 tickets to a Randwick race day), 2018 Cronulla Sharks fully signed jersey and dinner for 2 at Armidale Whitebull Hotel.  
**Auction:** 1 framed Wendell Sailor memorabilia picture.

### Current Sponsors:

Guyra MPS, NSW Government-Adam Marshall, Cronulla Sharks, Parramatta Eels, North Queensland Cowboys, Regional Express Airlines, Australian Turf Club, Rydges, JM & G George Investments, The Costa Group and The Whitebull Hotel.

## FREE EVENT!

Partners welcome.

Free return bus travel from Guyra (call to book a seat).

Lucky door prizes, Auction and raffle.

This night will target health; matters such as mental health, depression, prostate cancer and general health and wellbeing.

Guest Speakers and presentations by: Wendell Sailor, Justin Karcher, Rob Anderson, Centacare and Local Health Clinicians.

Dinner supplied.

Bring a mate, grab a coldy via gold coin donation and enjoy the night!



For further enquiries, book in for the bus or to RSVP please contact Alisa Kennedy: (02)6738 4045 or email: [hnelhd-lhcguyra@hnehealth.nsw.gov.au](mailto:hnelhd-lhcguyra@hnehealth.nsw.gov.au)



Health  
Hunter New England  
Local Health District

# GLENRAC OPERATING COMMITTEE 2017/18

**CHAIRMAN** - John Bavea

**VICE CHAIR** - Ian Lockwood    **TREASURER** - Sam Baker    **SECRETARY** - Tony Corcoran

## LANDHOLDER & DEPARTMENT REPRESENTATIVES:

Andrew Campbell, Chris Leahy, Jane Munro, Jim Benton, Mark Donovan, Mike Norton, Sandy Fitzgerald, Julie Firth.

**Glen Innes Severn Council** : TBA

**Department of Primary Industries** : Carol Harris ,

**National Parks & Wildlife Office:** Dr. Peter Croft

**Glen Innes Local Aboriginal Lands Council:** Jayden Potter

**Public Officer:** Mark Donovan

For all questions relating to GLENRAC please contact our staff at -

68 Church Street (PO Box 660) GLEN INNES NSW 2370

Ph: (02) 6732 3443

Mobile 0427 325 901

email [kylie@glenrac.org.au](mailto:kylie@glenrac.org.au)

**GLENRAC**  
**PO Box 660**  
**GLEN INNES**  
**NSW 2370**



## To The Land Manager

This activity is part of the Local Landcare Coordinators Initiative



**Local Land  
Services**

The Local Landcare Coordinators Initiative is funded by the NSW Government, and is supported through the partnership of Local Land Services and Landcare NSW.



**Landcare**  
New South Wales



Glen Innes Natural Resources Advisory Committee

## Coming Events:

- 9 Oct Tackling Rural Crime Information Event, Inverell 6:00pm - 9:00pm
- 10 Oct 2018 National Landcare Awards and Conference, Brisbane
- 10 Oct Tackling Rural Crime Information Event, Tenterfield 6:00pm to 9:00pm
- 15 Oct Media Messaging workshop with Stephanie Dale: GLENRAC 02 6732 3443
- 18 Oct Wongwibinda Exclusion Fence Bus trip: GLENRAC 02 6732 3443
- 18 Oct Resilient Soil Systems - Kim Deans Ph: 0455 596 464
- 19 Oct Guyra Men's Health evening: Alisa 6738 4045
- 26 Oct GLENRAC board meeting
- 14 Nov NLIS workshop, 9:00am to 12:00pm: GLENRAC 02 6732 3443
- 16 Nov Cool Koalas @ Emmaville