

# GLENRAC

# Newsletter

Sept / Oct 2015

Where to find us - National Park & Wildlife  
Services Building, 68 Church St  
Office Hours— Mon to Fri 9am to 5pm

## Inside This Issue

- *New drought loans*
- *Welcome to new weeds officer*
- *Pest animal update*
- *Weed funding now open*
- *Funding & scholarships*
- *Events and opportunities*
- *Coming Events*

## GLENRAC Inc. Annual General Meeting

24th September 2015

Commencing at 7:00pm

at the Glen Innes & District

Services Club, Grey St

Remembrance Room

Guest Speaker—Adam Marshall

**All welcome**

Light supper to be served



Glen Innes  
Natural Resources  
Advisory Committee



Local Land  
Services  
Northern Tablelands



CARING  
FOR  
OUR  
COUNTRY



## GLENRAC announced 2015 Landcare Community Group winner

Source- Adam Marshall MP - Member for Northern Tablelands

MEMBER for Northern Tablelands Adam Marshall today congratulated members and staff of the Glen Innes Natural Resource Advisory Committee (GLENRAC) on winning the NSW 2015 Landcare Community Group Award.

Mr Marshall said it was fantastic to see GLENRAC recognised for its positive contribution to the environment and communities of the Northern Tablelands for the last 25 years.

“GLENRAC has been in operation since 1989 and is one of the longest running Landcare networks in NSW. In recent years, it has gone from strength to strength largely due to the vision of past and current committee members, the GLENRAC membership and their committed staff,” Mr Marshall said.

“Their projects have focused on land degradation, particularly revegetation projects to restore native tree and shrubs species. “A large number of their projects have involved improving the skills and knowledge of our land managers and have centred on sustainable agriculture topics pertaining to soils, water pasture plants and grazing animals.”

“In the past 12 months they have had a strong focus on the people aspect of natural resource management, running activities to support drought affected farming businesses both manage and cope with the ongoing drought conditions,” he said.

“GLENRAC’s ability to respond to the needs of our community during difficult times has resulted in positive feedback, increased memberships and increased reach across our region with people from other nearby towns and interstate.

“The committee consists of representative from all land manager in our local community including rural land managers, National Parks & Wildlife Service, Glen Innes Severn Council, NSW DPI and the Glen Innes Local Aboriginal Lands council. “It goes without saying that to have such a diverse range of stakeholders on the committee ensures a high level of representation and consultation across the community.

“I congratulate everyone involved with GLENRAC and wish them luck in the next stage of the Landcare Awards process, the 2016 National Landcare Awards.”

# GLENRAC News

Hello All,

It is truly a pleasure to share the news that GLENRAC has been awarded the 2015 Landcare Community Group winner at the NSW Landcare Conference held in Orange last week. GLENRAC continues to exist largely thanks to the commitment of local volunteers who have made time available to be on the Committee of Management over the past 26 years. If you know someone who has been on the GLENRAC committee in the past or currently be sure and thank them for their efforts!



The services and activities GLENRAC delivers to our local community wouldn't happen without our team of skilled and professional staff, be sure and congratulate them next time you see them as well! Finally, thank you to our GLENRAC members who are equally important—we need to know what services and activities you would like to see delivered into the future—field days, workshops, funding, information—keep in touch and let us know what's important to you.

Regards, GLENRAC staff Kylie, Lucy, Tanya, Pam & Jennie



## Bright Ideas

### GPS Update

MotionX GPS is a handy app available to iPhone, Android and iPad users. The app is free and allows you to record up to 101 tracks. You can save up to 500 personal waypoints of your favourite locations. If you are in mobile phone coverage can see your position and tracks, on Google or Bing satellite maps.

Maps can also be pre-loaded if your property is not within mobile phone coverage. A double tap on the screen stores your location as a waypoint. You can also use the data capture and measure features if working offline. A double tap on the screen stores your location as a waypoint. You can view your coordinates either in UTM or Lat/Lon format.

If you would like features that you have captured added to a property map, you could email them directly from the app to GLENRAC.GPS units are still available for loan from GLENRAC, to map or measure your property features. To borrow a GPS and obtain a help sheet, phone Tanya on 02 6732 3443.

### NSW WorkCover Farm Self-Assessment Checklist

NSW WorkCover have a range of free resources available online for farm businesses. This easy to use check list will help identify areas you are doing well and areas you need to improve. To access a copy visit [www.workcover.nsw.gov.au](http://www.workcover.nsw.gov.au) or phone 13 10 50.

### Applications open for 2015-16 drought concessional loans in NSW

Source—Media Release Minister for Agriculture, Barnaby Joyce & NSW Minister for Primary Industries, Niall Blair—3 September 2015

Drought-affected farmers in New South Wales can now apply for a Drought Concessional Loan or a Drought Recovery Concessional Loan, with applications opening today for the 2015-16 round of both schemes.

Federal Minister for Agriculture, Barnaby Joyce, and NSW Minister for Primary Industries, Niall Blair, said the schemes helped those doing it tough during drought to restructure existing debt, or to fund operating expenses or drought preparedness and recovery activities.

“With concessional interest rates currently at 3.05 per cent for Drought Concessional Loans and 2.71 per cent for Drought Recovery Concessional Loans, these loan facilities represent the cheapest finance available to drought-affected farmers.

“Drought Concessional Loans are available for an interest-only term of five years, while Drought Recovery Concessional Loans are available for 10 years with interest-only repayments available for the first five years.

For more information contact your local rural Financial Counselling representative Stuart Brummell on 02 6732 3325 or 0448 035 152. A new “Farmer Assistance Update” Sept. 2015 presented at the Fit Farmers workshop is now available on the GLENRAC website under “Newsletters”.

Information is also available on the NSW RAA website, [www.raa.nsw.gov.au](http://www.raa.nsw.gov.au) or phone 02 6391 3000.

## New Partnership in Weed Management & Control for Glen Innes Severn Council area

Submitted by New England Weeds Authority

Following recent negotiations between Glen Innes Severn Council and the New England Weeds Authority (NEWA) a Memorandum of Understanding has been entered in to for the next 3 years whereby NEWA will carry out the weed management and control functions under the Noxious Weeds Act 1993 on behalf of Council.

The General Manager of Glen Innes Severn Council, Mr Hein Basson said "there would be benefits for both Council and NEWA through economies of scale, better utilisation of resources and the ability to enhance a regional strategic approach to weed management and control in the region".

NEWA is already the Authority for weed management and control in the Armidale Dumaresq, Walcha, Uralla and Guyra Council areas.

NEWA's General Manager Mr Wayne Deer said that "we look forward to this new partnership and are confident that the good working relationship will help to achieve the objectives of preventing new weed incursions, minimising the impact of existing weeds, and preventing the spread of weeds in the area to the benefit of the community".

Mr Iain McSkimming has recently been appointed by NEWA as the new Glen Innes Severn District Weeds Officer.

Iain has a rural background and has completed a Bachelor of Environmental Science. He is currently undertaking operational training in the Glen Innes and Armidale areas.

Iain said he looks forward to starting his new position based at the Glen Innes Severn Council office building at 136 Church St, Glen Innes, and meeting land and property owners as well as becoming better known throughout the area. He added "I hope to talk to every landholder in the Glen Innes Severn Council area in the next three years as part of the property inspection program and be accessible to provide advice and assistance in regard to weed management and control matters".

Inspections have commenced in the Red Range and Pinkett areas and roadside spraying activities will commence in October 2015.



**Iain can be contacted at the Glen Innes Severn Council Office on 6770 2358 and or mobile 0438501286.** Please do not hesitate to contact Iain for help with any weed related problems including identification of suspicious plants.

## Tussock Tamers Wanted!

Submitted by Inverell Shire Council

Landholders in Inverell Shire have are being urged to be vigilant to problem weed Serrated Tussock. Council Weeds Officer, Sam Gorton, says now is the ideal time to spot Serrated Tussock in the paddock, with the species more distinguishable in the winter months.

"Now is the ideal time to spot Serrated Tussock in the paddock, and it's also a good time to spray Tussock too. At this time of year, Serrated Tussock is a distinct dark green, unlike 'look-alikes' such as Poa Tussock and Cork Screw Grass", Sam explained.

The challenge for many is in accurately identifying the species, which looks markedly different at each phase of growth. To assist, Council is posting roadside signage in the south east and eastern areas of the Shire.

"We have had some positive feedback on the signs, with landholders now having a better idea of how to spot Serrated Tussock".

In 2014, Council secured funding from NSW Environmental Trust to for a two-year program to eradicate Serrated Tussock. The program is now well underway and there's been a strong response from landholders joining the program.

"Many landholders here realise Serrated Tussock is a big problem for graziers in other parts of the state as well as Victoria. Once Council announced it had funding to help landholders spray infestations, landholders have been keen to be involved", Sam added.

Serrated Tussock is known as a Class 1 priority weed and is has been declared a Weed of National Significance, due to its ability to spread rapidly, swallow up large areas of grazing land and choke out more desirable pastures.

James Browning from New England Weeds Authority says the best way to identify Serrated Tussock is to take a hands-on approach - the most distinguishing feature of Serrated Tussock is the small serrations on the leaves, which can be felt when the leaf is drawn between the fingers.

Landholders who require assistance with Serrated Tussock identification or suspect they may have the weed are encouraged to contact **Inverell Shire Council's Weeds Officer on 67288200.**

Free resources, including herbicide options and Serrated Tussock information, are available at the Inverell Shire Council Administration Centre in Otho Street.



# Pest Animal Update

## New additional tool in fox and wild dog control

Canid Pest Ejector (CPE) 1080 capsules are now registered), subject to the same access criteria as currently exists for 1080 baits in each State (except Queensland).

The CPE unit itself can be purchased from ACTA (Animal Control Technologies Australia). A number of units will be available in the future for loan from North East Wild Dog Facilitator, Dave Worsely.

Additional training will be required for all landholders interested in using these CPE's in addition to your existing chemical users qualification. This can be done locally with NT LLS staff qualified to deliver this training to small groups. This training is not running as yet but will be soon.

If you are interested in attending a training session contact the NT LLS office on 02 6732 8800 or GLENRAC and we can collate a list of names on behalf of landholders as well.

More information on the CPE will be available in coming months, so keep an eye out for it.

## New way of communicating pest animals reports

Northern Tablelands Local Land Services have introduced a centralised email address for pest animals reports (foxes, feral pigs, wild dogs, wild rabbits, plague locusts) The new email address is landholders to send to [pestanimals.northerntablelands@lls.nsw.gov.au](mailto:pestanimals.northerntablelands@lls.nsw.gov.au)

If you don't have access to an email account, continue contact your local NT LLS office by phone or in person.

## Invasive Animals CRC Feral Photos Competition

The competition encourages people to get out there and see what is happening in their environment and to get creative about how they can capture photographic evidence of pest animals and the damage they cause.

They accept photos from all locations across Australia and remote camera photos are also accepted. Entry is free and you can enter up to five (5) images for the chance to win some great prizes including - 1st Prize: Reconyx HC500 remote camera with batteries and SD card from Outdoor Cameras Australia; 2nd Prize: Samsung Galaxy Tab4 16GB 10" tablet; 3rd Prize: GoPro HERO action camera.

For more information visit [www.pestsmart.org.au](http://www.pestsmart.org.au)  
Entries close 30th September 2015.



## Feral Scan Phone Apps

In our last newsletter we covered the new Wild Dog Scan app.

that is available free for interested land managers. In the same suite of technology you can also access apps for Feral Cats, Foxes, Feral Pigs, Myna birds and Rabbits.

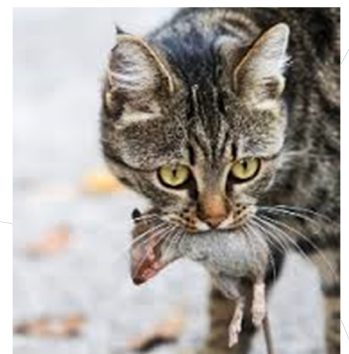
At a recent update on the WildDog Scan update we learnt you can also use this technology to record where you place baits for your own records. This can only be seen by you. You can further build on this by working with adjoining properties to share data to create better control programs.

You can also access FeralScan on your computer without needing a smartphone. If you think this sounds like a useful tool look up [www.feralscan.org.au](http://www.feralscan.org.au)

**Like to know more about using the Feral Scan apps?**  
Contact the GLENRAC office and let us know. If we have interest we can organise for a representative from the Invasive Animals CRC team to come and teach us how to use it.

## FERAL CATS WANTED

UNE PhD student Frances Zewe is looking for feral cats as part of her studies to investigate the prevalence of toxoplasmosis in the Glen Innes and surrounding cat population.



Whole fresh or frozen feral cat carcasses are required or Frances can supply a "trapper pack" (not traps) to collect the required samples. You can collect samples from cats trapped or shot or found as roadkill. GLENRAC now has a number of the "trapper packs" available for interested land managers.

If you can assist in this research contact Frances on 0423 363 481 or email [fzewe@myune.edu.au](mailto:fzewe@myune.edu.au)

## LANDCARE READY FOR GROWTH IN NSW

Source— Landcare NSW Media Release 7/9/15

Landcare NSW welcomes the announcement of a new \$15 million Landcare Support Program to be jointly delivered by Landcare NSW and Local Land Services.

The new Landcare Support Program consists of a network of up to 60 part-time local coordinators who will be supported by a “community of practice” and an initiative to pursue options for Landcare’s future financial sustainability.

The Minister for Primary Industries, Lands and Water, Niall Blair, announced the program at the NSW Landcare and Local Lands Services Conference, delivering on a policy the Liberals and Nationals took to the 2015 NSW State Election.

A Memorandum of Understanding between Local Land Services and Landcare NSW was signed at the Conference by chairs Rob Dulhunty from Landcare NSW and Alex Anthony from Local Land Services. It provides a framework and guiding principles for collaboration at the state, regional and local levels.

“Landcare is an Australian success story with a 25 year history,” said Landcare NSW Chair, Mr Rob Dulhunty. “This recognition and support from the State Government will see us enter a new period of growth and unlock the potential of thousands of volunteers in the Landcare network.

“It’s through partnerships with Government, corporates, philanthropists and other groups that Landcarers can get on with the vital work they do to develop sustainable agricultural practices, conserve the environment and build strong communities,” said Mr Dulhunty.

Applications from community organisations interested in hosting a local coordinator open on 14 September 2015.

### Are you A Friend of Landcare NSW?

You can join Landcare NSW as a Friend of Landcare as an individual. You can join online or by completing a hardcopy application form. For more information visit [www.landcarensw.org.au](http://www.landcarensw.org.au)

As a “Friend of Landcare NSW” you will receive the following benefits:

- ⇒ Quarterly updates on LNSW activities & new information;
- ⇒ Quick feedback loop on the important issues affecting Landcare at both State and Federal levels;
- ⇒ By adding your voice we can be more effective at every level.

## Assistance now available for weed control in some areas

Year 2 of the Protection and restoration of roadside vegetation project is about to commence. This project is funded by: Glen Innes Severn Council, through Northern Tablelands Local Land Services.

The project area covers the Glen Innes Severn Local Government Area. To be eligible your property must adjoin GISC High and Medium conservation value roadside area.

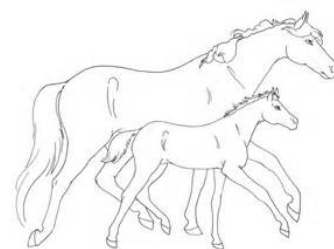
To find out if you are eligible contact the GLENRAC office by phone or visit the office to view a map of the council area with the eligible areas clearly identified.

Funding covers the purchase of chemical and/or contractor to treat weeds on private property. Council will then treat adjacent roadside.

If you are eligible you need to complete an application form and provide a copy of your rates notice. Application forms are now available on the GLENRAC website under Funding or from the office.

### Horse Owners Information Evening 7th October 2015, Start 7:00pm

GLENRAC will host a horse owners information evening in conjunction with Northern Tablelands Local Land Services and the Glen Innes Veterinary Hospital. The evening will be free to attend for all interested horse owners.



We will have a number of speakers including Dr. Alan Post GIVH; Dr. Nigel Brown NT LLS and Dr. Judi Earl, AIMS Ag.

Come along and find out more on a range of equine topics including -

- Planning your mares pregnancy
- Biosecurity for horse owners—what you need to know
- Worm control for horses
- Managing pastures for horses

The evening will run from 7:00pm to 9:00pm at the New England Club. Please arrive between 6:30pm and 6:50pm and we need to start promptly at 7:00pm.

This event will not be catered so please eat before you come. To RSVP, contact GLENRAC on 02 6732 3443 or email [kylie@glenrac.org.au](mailto:kylie@glenrac.org.au). RSVP will be essential to ensure we have enough room!

## Funding & Scholarship Opportunities

### Whole Kids Small Seeds Community Grants Program

This program supports grassroots organisations and groups that are working hard in their local communities to improve children's health and wellbeing through innovative and impactful projects.

Whole Kids Small Seeds seeks to fund organisations and groups that solve the root causes of problems at the community level. It looks for projects that have strong local community support and participation, in the belief that lasting change comes about at the local level through direct community involvement.

Whole Kids Small Seeds will provide a one-off grant up to \$5,000 for an individual project. Its preference, however, is to select projects that it can fully fund at lower grant amounts. In this way, it can help fund more projects in more communities.

Whole Kids Small Seeds selects projects that aim to deliver positive impacts in one or more of the following areas:

- ⇒ Improving children's nutrition and access to healthy food.
- ⇒ Reducing environmental health risks to children.
- ⇒ Encouraging greater access for children to education and learning opportunities.
- ⇒ Building stronger local communities for families and children.
- ⇒ Creating safe areas for children's play, recreation and enjoyment.
- ⇒ Enhancing children's mental health and wellbeing.
- ⇒ Protecting children's human rights and promoting social justice.
- ⇒ Protecting our environment, wildlife and natural wilderness for current and future generations of children.

Applications close 30/09/2015

Funding Website: <http://www.wholekids.com.au>

### Habitat Action Grants

Angling clubs, individuals, community groups, local councils and organisations interested in rehabilitating fish habitats in freshwater and saltwater areas throughout NSW can apply for grants.

Habitat rehabilitation projects which may be funded include: removal or modification of barriers to fish passage rehabilitation of riparian lands (river banks, wetlands, mangrove forests, saltmarsh); re-snagging waterways with timber structure; removal of exotic vegetation from waterways; bank stabilisation works; reinstatement of natural flow regimes

Applications will close at 5 pm Friday 16 October 2015.

For further information please ring (02) 6626 110 or visit <http://www.dpi.nsw.gov.au/fisheries/habitat/>

### RIRDC Rural Women's Award

Nominations are now open for the Rural Industries Research and Development (RIRDC) Rural Women's Award.

The Award identifies and supports emerging women leaders who have the desire, commitment and leadership potential to make a greater contribution to primary industries and rural communities. The Award is open to all women involved in primary industries and/or rural Australia.

The \$10,000 bursary is the major prize for each state and territory winner and provides the resources to develop each state and territory winner's vision into a project or initiative that will benefit primary industries and rural Australia.

Applications Close—30/10/2015; Funding Website: <http://www.rirdc.gov.au/rural-women's-award>

### RAS Foundation Scholarships for Students

Rural Scholarships are available to support individuals in NSW who demonstrate a passion for rural and commitment for any career that will ensure the future success of rural and regional NSW. Scholarships of \$5,000 for full-time study or \$2,500 for part-time study are available.

There is no limit on the types of courses that qualify or the age of the applicant. You could be studying anything from physiotherapy, engineering, teaching, agricultural science, horticulture, medicine and commerce - and almost everything in between. You could be studying at University, TAFE or VET courses, on campus or by distance learning. However applicants all have one thing in common - a desire to play an active part in the future of rural NSW.

Applicants for a Rural Scholarship must:

- ⇒ Be enrolled in or applying for study in any accredited tertiary course at an approved Australian education provider
- ⇒ Demonstrate a desire to contribute to the future of rural NSW
- ⇒ Demonstrate how a scholarship would assist them in achieving their education or training goal
- ⇒ Be an Australian citizen or permanent resident.

Applications Close: 30/09/2015

Funding Website: <http://www.rasnsw.com.au/rural-scholarships-.htm>





# Coming Events and Opportunities

## Low Stress Stock-handling school—Glen Innes 14th & 15th October 2015

A two day hands-on workshop designed to meet the needs to handle stock in a calm and confident manner in all situations, with all herding animals. Emphasis will be placed on developing a sound understanding of the key information through experience, and the majority of the school time is for this.

As a participant at an LSS Stock-handling School you will learn how your attitude can affect the outcomes from your stock. The goal of the school is participants leaving with a broader knowledge and understanding of stock handling which will help you make informed decisions to achieve maximum cost effective production gains with low stress livestock what ever your situation may be.

Thanks to funding from the Australian Government's National Landcare Programme, GLENRAC is able to provide the school for \$330 per person, or \$302.50 for the second participant in the same family. To register, go to <http://tks.im/low-ss>

*Attitude is Everything!*



## Business Skills Workshop for Young Farmers Thurs. 24th September 2015, GLENCOE

- Are you a young farmer with a bright idea you'd like to develop?
- Thinking of a new venture or enterprise but don't know where to start?
- How about setting aside a day to get some tips and tools to help you get to where you'd like to go and have some fun with like minded people along the way!

This workshop will be held at the Red Lion Tavern at Glencoe, registration from 9.30 am. Dinner from 6pm. This event is organised by the New England North West Business Enterprise Centre.

To purchase a ticket visit <http://youngfarmers.eventbrite.com.au> for your free ticket or phone Jane Leake 0427 293 949 or email [advisorguy-ra@bec.com.au](mailto:advisorguy-ra@bec.com.au) Registrations close 22 Sept.

## Native Bee Keeping Workshop - Inverell Saturday 5th December, 9.30am to 3.30pm

Learn about our stingless social Native Bees which produce honey and the 2000 odd solitary native bees Australia has and their characteristics including their pollination abilities. The workshop will include these topics: how to split a boxed hive; how to transfer a hive from a log into a box; amazing honey for tasting and how to locate hives in the bush so they can be protected



The cost of the workshop is \$50pp BYO morning tea and lunch, hat, and water. Contact Gwymac Landcare to book your place 02 6721 1241.

## Training Subsidies available in the New England & North West region

Thanks to the NSW Government's Smart and Skilled program, RuralBiz Training is able to offer the Diploma of Agriculture and the Advanced Diploma of Agriculture to those in the New England and North West region at heavily subsidised prices. Student fees under this subsidy are almost half what they would be normally so it's a great opportunity to upgrade your business skills for the farm - and it's all online so you won't need to leave the farm! VET FEE-HELP is also available for assistance in paying your student fees.

For more information contact Melinda on 02 6884 8812 or email [admin@ruralbiztraining.com.au](mailto:admin@ruralbiztraining.com.au)

## National Biological Farming Conference & Expo 2015

This event will be held on the 6-8 November at Southern Cross University Lismore. The conference will provide a cross-industry forum for information sharing for producers as diverse as beef and dairy, cropping, nuts, fruit and vegetables, rice and coffee.

The conference will feature 25 international and national experts and will enable farmers, service providers and product manufacturers to learn more about better food production methods.

Registrations are now open. Early bird pricing ends 14th Sept. (save \$50pp.) or \$250pp to attend. Visit [www.soilcare.org.au](http://www.soilcare.org.au) to view the program and to register. Phone 0448 026 230.



# GLENRAC OPERATING COMMITTEE 2014/15

**CHAIRMAN** - Jim Benton

**VICE CHAIRMAN** - John Bavea

**TREASURER** - Sam Baker

**SECRETARY** - Jeff Lowien

## LANDHOLDER & DEPARTMENT REPRESENTATIVES:

Greg Chappell, Tony Holliss, Jane Munro, Desmond FitzGerald, Mike Norton, Norman Whitaker, Geoff Coldham, Gordon Wollen

**Glen Innes Severn Council** : Graham Price or Ian Trow & Col Price

**Department of Primary Industries** : Carol Harris , **National Parks & Wildlife Office**: Peter Croft

**Northern Tablelands Local Land Services**: Rob Munro

**Glen Innes Local Aboriginal Lands Council**: Karen Potter

**Public Officer**: John Brien

For all questions relating to GLENRAC please contact our staff at -

68 Church Street (PO Box 660) GLEN INNES NSW 2370

Ph: (02) 6732 3443

Mobile 0427 325 901

email [kylie@glenrac.org.au](mailto:kylie@glenrac.org.au)

GLENRAC  
PO Box 660  
GLEN INNES  
NSW 2370



## To The Land Manager



Local Land  
Services  
Northern Tablelands



Glen Innes Natural Resources Advisory Committee

## Coming Events:

- |            |  |
|------------|--|
| 17-19 Sept | Pasture to Pocket workshop, Glen Innes   |
| 24 Sept    | Young Farmers Business Skills workshop, Glencoe                                  |
| 24 Sept    | GLENRAC AGM, Glen Innes District Services Club 7:00pm start                      |
| 30 Sept    | Compost Information Day Tamworth RSVP by 14 Sept. 0432 258 983                   |
| 6 Oct      | Precision Ag Expo Gunnedah— Hosted by Society of Precision Agriculture Australia |
| 7 Oct      | Horse Owners Information Night, New England Club, arrive from 6:30pm             |
| 9-11 Oct   | Gather in the Glen, registrations close 18th Sept.                               |
| 17-18 Oct  | Low Stress Stockhandling school, Glen Innes                                      |
| 19 Nov     | All the Dirt bus trip to Working with Nature Guyra                               |
| 23-24 Nov  | Northern Lights Project Display Glen Innes Library                               |
| 7-8 Nov.   | National Biological Farming Conference & Expo, Lismore NSW                       |
| 5 Dec      | Native Bee workshop, Inverell  |

For more information on any of these events, including contact details visit the GLENRAC website, [www.glenrac.org.au](http://www.glenrac.org.au)<sup>8</sup>



Women For All Seasons  
9-11 October 2015  
Email: [gatherintheglen@gmail.com](mailto:gatherintheglen@gmail.com)