

# GLENRAC

# Newsletter

Jan-March 2020



Glen Innes Natural Resources Advisory Committee

**Our vision is to create solutions for a sustainable and productive landscape.**

Where to find us

NPWS Building  
68 Church Street  
Glen Innes

### Inside This Issue

- Latest news and events
- Gondwana Shield
- Little Llangothlin Nature Reserve
- Re-planting post bush fire
- Weed update
- New bush fire support

## GLENRAC CEO KYLIE FALCONER IS AWARDED ENVIRONMENTAL CITIZEN OF THE YEAR FOR 2020



*Above: Adam Marshall MP, GLENRAC CEO Kylie Falconer and Mayor Carol Sparks.*

GLENRAC are delighted to share that our Chief Executive Officer, Kylie Falconer, was awarded the Environmental Citizen Award for 2020 at the recent Australia Day celebrations.

For those who don't already know, Kylie is the backbone of our organisation. Driven, energetic and a natural leader, Kylie is committed to ensuring GLENRAC always provides the best service for the community.

In the 13 years since Kylie began working at GLENRAC, the group has transformed into one of the region's most trusted organisations, uniting landholders, businesses, conservationists and more than 1000 members with the shared goal of caring for the region's natural resources.

Kylie's exceptional talent for organisation and creative thinking are observable in the wide array of opportunities provided by GLENRAC, including field days, information events and community celebrations that are tailored to fit the needs of the people in our region.

The tireless efforts of Kylie and her team have been remarkable over the last twelve months. As the community went into battle against the worst drought in living memory and catastrophic bush fires, GLENRAC stepped up as a leading support system in the region, assisting landholders to access and submit drought and fire forms, hosting numerous events to bring people together and acting as a hub for donated items to be received and distributed to landholders in need.

Congratulations Kylie (and Matt and Angus!) on this exciting and well-deserved achievement and thank you for all of your efforts. This community is very lucky to have you!



Many Hands, One Voice



# GLENRAC MATTERS

Dear readers,

Welcome to the first GLENRAC Newsletter of 2020!

What a delight to see some consistent rainfall across the region over the last month. Here's hoping it continues throughout the year, especially reaching those that need it most. Despite the relief of **finally** having a reason to empty the rain gauge, our community faces a challenging recovery from drought and bush fire. As always, the team at GLENRAC are committed to assisting you in whatever way we can, whether that be scanning and uploading drought and bush fire forms or connecting you with many of the services, grants and opportunities available to you. Simply make an appointment with one of our friendly staff to access this support today.

The end of 2019 featured some fantastic events for our community, including the 100-mile themed GLENRAC 30th Anniversary Dinner at the Glen Innes Services Club, featuring all local produce sourced from within 160km of Glen Innes, and the Christmas Smoko at the Glen Innes Showgrounds, held in conjunction with Vickie Williamson and her team from Ray White Glen Innes, which brought more than 160 people together for an afternoon filled with delicious food, Christmas gifts, water, over \$7000 of voucher giveaways to local businesses and, most importantly, catching up with friends from around the region.

We have an exciting array of events planned for this year, including our weekly Smoko events that will be rolling out across the region thanks to funding from the Primary Health Network. Get in touch with us to find out when we will be near you.

Thank you for all for your ongoing support. We hope to see you at a future GLENRAC event soon.

**Regards, the GLENRAC Staff: Kylie, Jennie, Mahri and Lucy**

## BRIGHT IDEAS

### Be a Dead Tree Detective!

A nation-wide project to collect observations of dead or dying trees is being initiated by researchers at the University of New England and the University of Western Sydney. It sounds a bit grim, but knowing where and when trees have died will help scientists to work out what the cause is, identify trees that are vulnerable and take steps to protect them. It's easy to get involved! If you notice a dead or dying tree, simply take a photograph and upload it and its location to [www.tinyurl/deadtreedetective](http://www.tinyurl/deadtreedetective)



### Rain Parrot

There are loads of weather apps out there, but this might be the only one that chirps at you before a rain event! This charming app is hard to beat with its prediction accuracy, telling you when it is going to rain down to the minute and alerting you 30 minutes beforehand. It also has great radar images. Download from the App store. \$2.99.

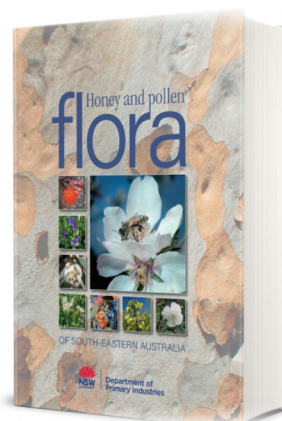
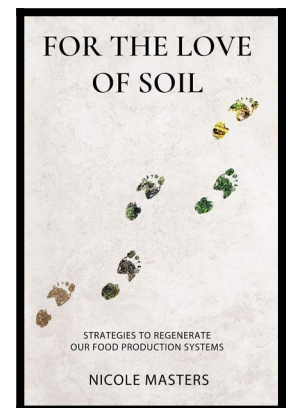


## WHAT WE ARE READING

### For the Love of Soil: Strategies to Regenerate Our Food Production Systems

By Nicole Masters

Learn a roadmap to healthy soil and revitalised food systems to powerfully address these times of challenge. This book equips producers with knowledge, skills and insights to regenerate ecosystem health and grow farm profits. \$35.50.



### Honey and Pollen Flora of South-Eastern Australia

By Dr Doug Somerville

This long-awaited publication focuses on the value of Australian plants to nectarivores – honey bees in particular. It is the culmination of 30 years of research by Dr Doug Somerville, NSW DPI. Over

500 plants are photographed and described for identification, mapped, and given a star rating for their value to honey bees. This book will be an invaluable tool for beekeepers. \$175.

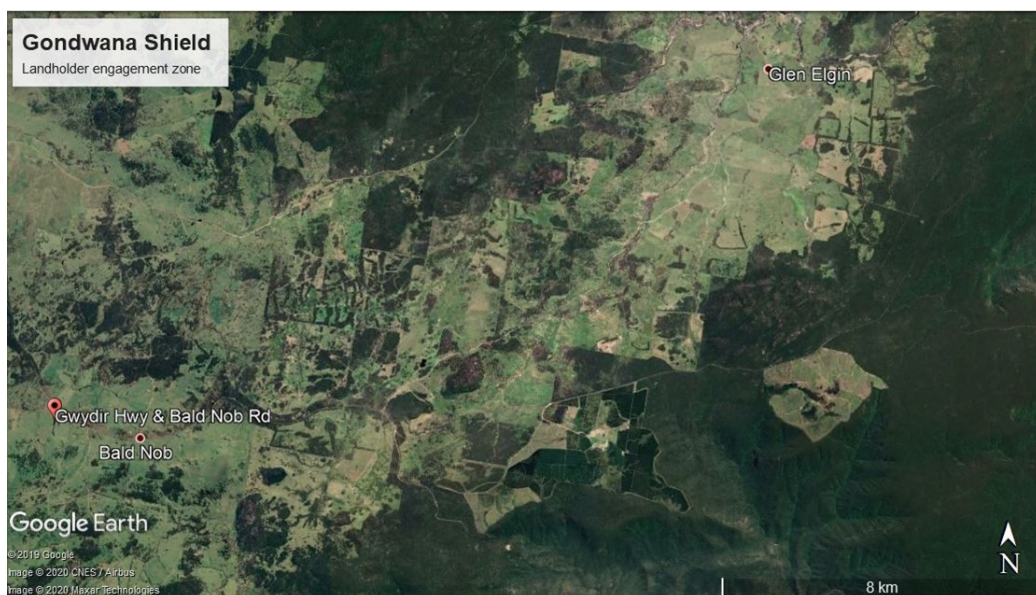
# NEWS AND EVENTS



CEO Landcare NSW, Adrian Zammit, recently visited Glen Innes to tour the GLENRAC offices and meet some of our committee members and staff. The day also included a lovely visit to Mike and Belinda Norton's property, 'Tiranna' which is looking beautiful after recent rain. Pictured from left to right: Steve Harvey, Andrew Campbell, Kylie Falconer, Julie Firth, Adrian Zammit, Mike Norton, Ameliaranne Michell, Sandy Fitzgerald, Rob Banham and Mahri Koch.

## Eastern Fall Weed Control Program: Protecting Our World Heritage Rainforest

The Australian Government is funding an annual roadside weed control program until 2023 to contain the spread of invasive grasses and weeds into the Gondwana Rainforests of Australia World Heritage Area. Northern Tablelands Local Land Services has partnered with GLENRAC to



engage landholders whose properties align with the Gwydir Highway 20km east of the Bald Nob Road intersection, and to the Washpool National Park western boundary, to control invasive plants within paddocks that adjoin the highway.

The Gondwana Shield Project aims to protect the World Heritage Area from the impacts of plants such as Coolatai Grass, Whiskey Grass, Giant Paramatta Grass, and African Love Grass. If you have paddocks adjoining the Gwydir Highway within the target zone, and you would like some free chemical to target these grasses, please call GLENRAC on 6732 3443 to register your interest and complete a landholder agreement for the relevant paddocks.

A field event and free Smoko will be held on the 15th April for landholders to discover more information and register your property details.

# NEWS AND EVENTS

## Little Llangothlin Nature Reserve National Landcare Program Phase 2 Project

Now halfway through its second year, the Little Llangothlin Nature Reserve Ramsar site (LLNR NLP2) Project is providing the site manager (National Parks and Wildlife Service NSW) and project partners (Australian Government, NT LLS, and GLENRAC) with data about the ecological condition and function of the Reserve. This information will assist with informing future management, with particular attention to the threatened species and ecological communities that call the Reserve home.

Year 1 monitoring surveys established baseline conditions for flora and fauna, while water quality and wetland health baseline data surveys were postponed due to the impacts of long term drought. As a substitute, a literature review of all previous studies of the site and surrounding landscape has provided some understanding of aquatic life and water chemistry during normal seasons over the past 10 years. A social survey of landholder neighbours to the lagoon has set the scene for their involvement in supporting the project and partnering NPWS and NT LLS in invasive species control programs.



The boys from *Backtrack* planted 2ha of seedlings there in 2019, as a first step in regeneration of the threatened ecological community *Eucalyptus nova anglica* (New England Peppermint).

Year 2 of the project will see us engaging with landholders for pest animal management information days with the first taking place at Ben Lomond Hall on 20 February. NT LLS staff person, Perry Newman, will lead local landholders through fox baiting and pig trapping techniques. Department Primary Industries representatives will also be on hand to demonstrate the latest FERALSAN App and monitoring camera correct use. Call GLENRAC to register your participation in this free event by 17 February. See you there!



### Re-planting in the Aftermath of Bush Fire

Ecologist, Dave Carr, of Stringybark Ecological recently spoke to attendees at our Aqua Park Smoko, explaining the unprecedented dry conditions that led to the catastrophic natural destruction of the recent bush fires, and advising residents what species to replant in the aftermath.

“Australian vegetation is adapted to fire, to burning, and many will recover. But in the extraordinary dry conditions we’ve been experiencing, just about anything would have burned probably,” says Dave Carr.

“Certain species are certainly more prone to fire, encouraging ignition. Eucalypts for example produce lots of flammable organic material and their leaves have a high oil content, exuding an oil vapour which can carry fire through the air in extreme conditions. Although they are proven successes as paddock trees, in shelter belts and as wildlife habitat, these should always be planted 10-50m clear of any housing in bush fire prone areas. Many exotics such as oaks are worth planting around your house, particularly if you are worried about fires. However they aren’t necessarily as good as natives at providing shelter for a suite of wildlife.”

## WEEDS ARE GERMINATING! SOME PLANTS TO WATCH OUT FOR

Now there has been some rain, some mass germinations of different species has occurred. Keep vigilant—with all the movement of hay from non local areas and lack of groundcover, weeds have maximum opportunity for germination.



Above (left to right): Pigweed, Fat Hen, Cobble's Peg with seed head inset and Bladder Ketmia—these weeds grow widespread across Australia. One weed to look out for in the coming months is Pigweed. It is prostrate with reddish stems to 20cm in length. Leaves are oblong to heart-shape, shiny and up to 3cm in length. Flowers are yellow or greenish in leafy clusters. Mostly summer flowering annual herb. It is a common weed of gardens, footpaths, open disturbed sites and cultivation. With significant lack of groundcover, this weed is widespread.

Fat Hen is another weed to keep an eye out for across Australia. This plant is native to Europe, non aromatic and is an erect annual herb. It varies greatly though locally is usually blue or grey-green in colour with oval or trowel shaped leaves. Mature plants are bushy with many branches and can grow to 2m tall. Leaves are toothed where upper leaves may be untoothed. It flowers in small clusters, in spike like inflorescences between summer and autumn. Often found in drains and along watercourses.

Another weed to look out for is Cobble's Peg. This plant is native to south America, and is an erect, annual herb. Leaves are 6-12cm long, oval in shape and divided into 3 or 5 leaflets with toothed margins. Flowers are yellow (5-15mm across). Seeds are clusters of long black or dark brown slender barbed spines at their summit which cling to clothing, shoelaces and animals. Mostly summer to autumn flowering. A major weed in disturbed areas, roadsides, wasteland and gardens across Australia.

Bladder Ketmia is the final weed to watch out for. It is an annual growing to 1m in height. Leaves are alternate, deeply divided into 3 or 5 toothed segments. Flowers are yellow to white and purplish near base. The sepals inflate after flowering to form a 'bladder' like shape which protects and encloses the fruit. This plant is summer to autumn flowering and is very short lived. It is a weed in gardens, roadsides and cultivation.

These species are non priority species that we are receiving numerous enquiries about. To control these weeds, use the recommended herbicide at the recommended rate or physical control is a viable option, or get in contact with NEWA.

### **New England Weeds Authority Biosecurity Officers (Weeds) from left to right:**

Josh Robb, Matt Benham, Rachel Betts, Josh Biddle, Trent McIntyre and James Browning (Senior Biosecurity Officer)



New England Weeds Authority Weed Officers are on hand to assist with your noxious weed identification, management and control. Visit [www.newa.com.au](http://www.newa.com.au) or Phone 02 6770 3602



# GLENRAC ACTIVITY SNAPSHOTS



Kylie Falconer, Vickie Williamson and some of the attendees of our Christmas Smoko event at the Glen Innes Showground. More than 160 people came together for an afternoon filled with delicious food (catered by the Glen Innes Lionesses and Rotary), Christmas gifts, water, over \$7000 of voucher giveaways and most importantly, catching up with friends from around the region.



Glen Innes' very own travelling molecular ecologist, Deane Smith headlined our January Focus event: The Adventures of an Outback Ecologist.

A huge thank you to Coles Glen Innes, in particular Manager Natasha Miles, and the RSPCA NSW Glen Innes Volunteer Branch, especially President Glen Sternberg and volunteers John Ebzery, Brigitte Burrige, Jamie and Alexander Loeb, for organising the generous donation of cat, dog and bird food to GLENRAC to assist drought and fire affected landholders.



160 members of the community joined together in celebration of GLENRAC's 30 year anniversary last November. The event featured a 100-mile theme, with all produce sourced from within 100 miles of Glen Innes. Campbell's Butchery, Premier Meats, Deano's Springwater Trout, AusGoat, Ban Wyong Boer and Beef, Stanthorpe Cheese, Redgum Eggs, Super Strawberry, Glen Initiative Garden, Bakers Bees, ANNE's Brew, Glen Pie Shop, Guyra Tomatoes, Janie Kent Cakes, Crystal Room Restaurant, Deepwater Brewery and Toppers Wines all featured on the night.

Attendees of our Smoko with Friends at Glen Elgin event brushing up on their animal nutrition needs with DPI vet, Nigel Brown. GLENRAC has received funding to run one Smoko a week until June across the Glen Innes and wider region. Contact us to find out when we will be near you!

# INFORMATION, OPPORTUNITIES AND FUNDING

DROUGHT IS TOUGH.  
BUT CATCHING UP WITH  
FRIENDS DOESN'T HAVE TO BE.

## TAKE A LITTLE TIME OUT FROM THE DRY OVER A MEAL WITH FRIENDS

GLENRAC HAS VOUCHERS TO THE VALUE OF \$300 TO SUPPORT SMALL GROUPS OF LANDHOLDERS TO HAVE A NIGHT OUT WITH FAMILY, FRIENDS OR NEIGHBOURS.

CONTACT GLENRAC BY PHONE 02 6732 3443 OR EMAIL [LUCY.MUNRO@GLENRAC.ORG.AU](mailto:LUCY.MUNRO@GLENRAC.ORG.AU) TO FIND OUT MORE. LIMITED VOUCHERS AVAILABLE. FIRST IN FIRST SERVED.



### TIME OUT FROM THE DRY: \$300 MEAL VOUCHERS

GLENRAC has meal vouchers to the value of \$300 to support small groups of landholders to have a night out with family, friends or neighbours at a business in town. Available to members only. Not a member? Contact us to sign up today - it's FREE!

### NEW BUSH FIRE ASSISTANCE

- **Special Disaster Grant:** Up to \$75,000 available to primary producers in LGA's affected by the NSW bush fires since August 2019. **Find out more by calling the Rural Assistance Authority on 1800 678 593.**
- **Special Disaster Loan:** Low interest concessional loans of up to \$500,000 for eligible primary producers and small businesses affected by the most recent bushfires. **Find out more by calling the Rural Assistance Authority on 1800 678 593.**
- **Red Cross Bush Fire Grants:** Up to \$20,000 available for bush fire affected people in financial hardship after the most recent bush fires. **Call 1800 733 276.**
- **NAB Bank, Westpac Bank, Commonwealth Bank, ANZ Bank:** grants available for customers affected by the most recent bush fires. **Drop into your local branch to find out more information.**

### FUNDING OPPORTUNITIES

- **MLA Bush Fire Recovery Sponsorship Program:** financial support for industry events that increase awareness and adoption of information and resources that will support producers recovering from bushfires. Up to \$2,500 per event. **Contact [events@mla.com.au](mailto:events@mla.com.au)**
- **Climate Smart Adaptation Grants:** NSW DPI is seeking proposals for on-farm projects which will help producers adapt to climate change over the next 30 years. **Visit <https://www.dpi.nsw.gov.au/ccrs>**
- **Volunteer Grants:** \$1,000-\$5,000 available to help community organisations support the efforts of Australia's volunteers. **Visit <https://www.communitygrants.gov.au/grants/volunteer-grants-activity-%E2%80%93-2019-20-volunteer-grants>**

### WATCH OUT! CANE TOADS ARE ABOUT!

National Parks and Wildlife have confirmed a number of cane toads have been discovered in Glen Innes. Currently ineradicable, cane toads are infamous pests and a threat to biodiversity because they are poisonous when ingested by other animals. If you sight an animal you believe to be a cane toad, contact Glen Innes NPWS on 6739 0700.

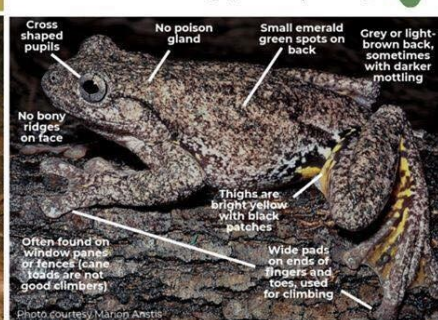
Cane toad (*Rhinella marina*):



#### If you think you have seen a cane toad:

- Wear protective gear and contain the animal in a ventilated container with a little water
- Don't harm it - it might be a native frog!
- Take photos and notify NSW DPI at: [www.dpi.nsw.gov.au/biosecurityreport](http://www.dpi.nsw.gov.au/biosecurityreport)

Peron's tree frog (*Litoria peronii*):



Download the Frog ID app to learn more about cane toads and help ID native frogs in your area. Visit [www.frogid.net.au](http://www.frogid.net.au)

For more information, visit [www.dpi.nsw.gov.au/cane-toad](http://www.dpi.nsw.gov.au/cane-toad)



For more information about all of the funding and support opportunities available in our area, visit our website: [www.glenrac.org.au](http://www.glenrac.org.au). We also send out weekly e-flashes listing all of our upcoming events and new funding opportunities available. Stay up to date — call our office on 6723 3443 to subscribe!

# GLENRAC OPERATING COMMITTEE 2018/19

**CHAIRMAN** - Ian Lockwood

**VICE CHAIR** - Julie Firth

**TREASURER** - Sam Baker

**SECRETARY** - Tony Corcoran

## LANDHOLDER & DEPARTMENT REPRESENTATIVES:

Rob Banham, John Bavea, Andrew Campbell, Sandy Fitzgerald, Chris Leahy, Jane Munro, Mike Norton.

**Glen Innes Severn Council** : Graham Price, Col Price

**Department of Primary Industries** : Carol Harris

**National Parks & Wildlife Office**: Dr. Peter Croft

**Glen Innes Local Aboriginal Lands Council**: Jayden Potter

**Public Officer**: Mark Donovan

For all questions relating to GLENRAC please contact our staff at -

68 Church Street (PO Box 660) GLEN INNES NSW 2370

Ph: (02) 6732 3443

Mobile 0427 325 901

email [kylie@glenrac.org.au](mailto:kylie@glenrac.org.au)

email: [glenrac@glenrac.org.au](mailto:glenrac@glenrac.org.au)

website: [www.glenrac.org.au](http://www.glenrac.org.au)

GLENRAC  
PO Box 660  
GLEN INNES  
NSW 2370



## To The Land Manager

This activity is part of the Local Landcare Coordinators Initiative



**Local Land  
Services**

The Local Landcare Coordinators Initiative is funded by the NSW Government, and is supported through the partnership of Local Land Services and Landcare NSW.



Glen Innes Natural Resources Advisory Committee

### Coming Events:

- |             |   |
|-------------|---|
| 19 February | Focus Event: World Wildlife Wanderings - Antarctica, Africa & South America 7:00pm-8:30pm |
| 20 February | Vertebrate Pest Management Event - Ben Lomond 9:30am-12:30pm                              |
| 20 February | Smoko with Friends (FREE BBQ LUNCH) - Ben Lomond 12:30pm-2:00pm                           |
| 25 February | What a Relief! It's Damian Callinan! - Deepwater from 6:00pm                              |
| 5 March     | What a Relief! It's Damian Callinan! - Ben Lomond from 6:00pm                             |
| 18 March    | Focus Event: Dung Beetles with Zac Hemmings - Glen Innes 7:00pm-9:00pm                    |
| 21 March    | Harmony Day - Glen Innes 10:00am-12:00pm  |
| 2-3 April   | FREE Mental Health First Aid Training - Glen Innes 9am-3pm                                |