

Newsletter

GLENRAC

Glen Innes
Natural Resources
Advisory Committee

Glen Innes Natural Resources Advisory Committee

GLENRAC's vision is to provide solutions for a sustainable and productive

Where to find us - National Parks & Wildlife Services Building, 68 Church St
Office Hours - Mon to Fri 9am to 5pm

Inside This Issue

- Good news
- New Books & apps
- Around the Farm
- Renewable Energy
- Weed update
- Funding opportunities
- Coming Events

Economic value of Landcare estimated at \$500 million pa

A new landmark study released estimates the net benefits delivered by a supported NSW Landcare community to be \$500 million a year, based on the data available.

The report by Aurecon Infrastructure Advisory, commissioned by Landcare NSW with support from NSW Local Land Services, studied Landcare in selected regions, including Glen Innes, identifying and confirming substantial economic value. The study reviewed the literature, summarised data and applied economic valuation techniques to estimate the significant contribution Landcare makes in NSW.

The average annual net economic value of the outcomes delivered by **GLENRAC** to the NSW community and environment has been estimated at \$3 million. This estimate is likely to be conservative because only some of the benefits could be quantified using available data. Extrapolated statewide, the economic value of Landcare is estimated at \$500 million a year. Landcare NSW Chair and local Glen Innes landowner Rob Dulhunty was pleased with the report's findings, but not surprised.

"Anyone associated with Landcare will testify to the value it provides. The outcomes Landcare generates for the environment, agriculture and people are widely known. This study puts a dollar value on these benefits," said Mr Dulhunty. "I first got involved with Landcare on my own property in Glen Innes at the beginning of Landcare nearly 30 years ago and I still get inspired when I listen to stories from the grassroots."

Aurecon's assessment of the benefits of Landcare in NSW shows the impact of a supported Landcare network is significant. It highlights the importance of the contribution made by Landcare NSW, through its role as a statewide peak body and through programs such as the Local Landcare Coordinator Initiative which it jointly manages

with NSW Local Land Services, in helping achieve these outcomes.

The study's author, Senior Economist, Kapil Kulkarni, presented his findings from this landmark research at a forum held at Parliament House in Sydney on 21 June.

"The Aurecon team learned a lot about Landcare during the study and we were amazed by how much of a difference Landcare makes to communities and the environment across NSW".



Local Land Services
Northern Tablelands



FOLLOW US ON

Instagram



Many Hands, One Voice

GLENRAC Matters

Hello GLENRAC members,

Regards, GLENRAC Staff—Kylie, Lucy, Jennie & Kelly

GLENRAC and Members Successes

GLENRAC and GYMAC recently hosted Stuart Harris and his video “MARATUS” telling the story of how an Australian garbage collector photographs an alien-



like spider and it triggers a series of life-changing events that make scientific history.

To watch video click on link below <https://iview.abc.net.au/show/maratus/video/IV1732H001S00>

You can also follow them on facebook <https://www.facebook.com/projectmaratus/>

A group of intrepid adventurers went on a bus trip with Wendy Hawes, Principal Ecologist at The Envirofactor and Dr Peter Croft to view a number of threatened ecological communities around the Glen Innes district. One of the exciting discoveries were the hollows in Blakelys Red Gums that house the Musk Lorikeet. The hollows are also home to the endangered Swift Parrot.



The Glen Innes Severn Council and GLENRAC Composting days were a hit with many going away determined to revive or start new compost heaps. The speaker, Nicole Walker gave practical tips on starting and kick starting compost as well as worm farms.



The NLP 1 funded Socially Savvy workshops were well attended with a number of participants returning for the second day... Feedback included “Interactive, hands on, practical, very professional, knowledge is power, everything was excellent—so much to know, Facebook business manager—didn’t know anything about this before today!

\$2.1 MILLION BUDGET BOOST FOR GLEN INNES AGRICULTURAL RESEARCH

NORTHERN Tablelands MP Adam Marshall has welcomed today’s 2018-19 NSW Budget boost of \$2.1 million for the Glen Innes Agricultural Research Station to extend glasshouse facilities for more advanced pasture research to help the region’s farmers.

Mr Marshall said the investment would substantially add to the Glen Innes Research Station’s capacity to play an integral part in bolstering on-farm productivity.

Mr Marshall said the new glasshouse facility at the Glen Innes DPI research institute would lead ongoing investigations into research in response to changing climatic conditions.

“The funding will provide for new glasshouse infrastructure which will be completely climate controlled so they will be able to do temperature experiments into tropical pastures and the different environmental effects of those,” Mr Marshall said. “It will mean they will have a better handle on understanding the range and adaptation of tropical pastures into the future.”

Mr Marshall said the existing four glasshouses at the Glen Innes station were built in the 1960s but the budget funding will give them a completely new and quality facility to undertake more extensive research.

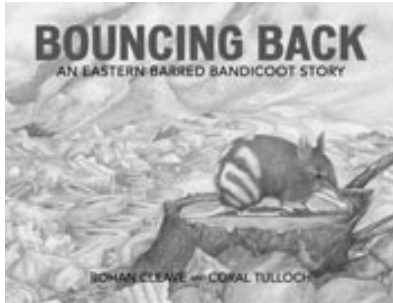
“This includes research into Chilean Needle Grass which is a major weed problem on the Northern Tablelands but critically it has potential for a wider range and distribution.

“As it is very hard to get rid of, it poses a challenge for graziers because it can have a devastating impact on agricultural productivity and on the environment.

“The new glasshouse will give research scientists at Glen Innes a new focus on detailed studies and complement what they are doing in the field.

“That includes looking at alternative measures from chemical control. This is vitally important for our farmers and graziers to keep ahead of the global agricultural industry and it is critical that our northern research plays a big part in that overall R&D push.” MEDIA: Adam Marshall 0429 440 054

New Book



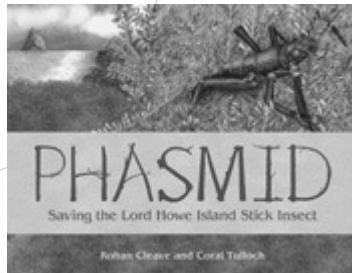
BOUNCING BACK An Eastern Barred Bandicoot Story.

Rohan Cleave, Coral Tulloch
A beautifully illustrated story of this marsupial's plight and how it was saved from extinction.

Hardback April 2018 \$24.95 ISBN: 9781486308279
Publisher: CSIRO Publishing

SAVING THE LORD HOWE ISLAND STICK INSECT

Rohan Cleave, Coral Tulloch
The stunningly illustrated true story of the phasmid and its remarkable journey back from extinction.

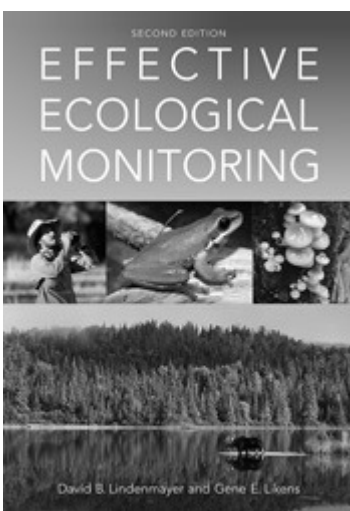


Phasmid is the amazing true story of the Lord Howe Island Phasmid, or Stick Insect. Believed to be extinct for nearly 80 years, the phasmids were rediscovered on Balls Pyramid, a volcanic outcrop 23 kilometres off the coast of Lord Howe Island, Australia. Hardback September 2015 \$ 24.95 ISBN: 9781486301126
Publisher: CSIRO Publishing

EFFECTIVE ECOLOGICAL MONITORING

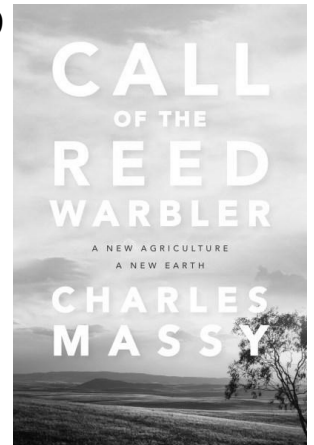
This fully revised second edition illustrates key aspects of effective monitoring. Long-term monitoring programs are fundamental to understanding the natural environment and managing major environmental problems. Yet they are often done very poorly and ineffectively. This second edition of the highly

acclaimed Effective Ecological Monitoring describes what makes monitoring programs successful and how to ensure that long-term monitoring studies persist. Paperback May 2018 \$ 49.95 ISBN: 9781486308927
Publisher: CSIRO Publishing



CALL OF THE REED WARBLER

A New Agriculture - A New Earth. Charles Massy
The author of "Breaking the Sheep's Back" has shown the same qualities of perception, academic qualification and a 5th generation rural heritage on the Monaro when tackling the big issues of land use and landscape ecology.

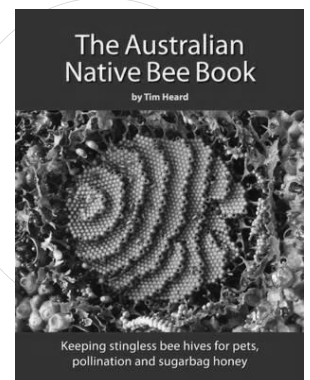


This book's title suited his purpose as an analogy for the unheard cry of so much of our ecologically struggling landscape. He matches his own transitional management experience with many fellow travellers'. Chapter after chapter tell a common theme of small acreage intensive farmers to some big country operators using pasture management for building soil carbon and soil biology. Quality of life as both a prosperity dividend as well as a human health dividend is another theme coming through as we build soil health. The book may be heavy in places but nature's processors are anything but simple. This book is for people in and around farming for the long haul. Graham Willis

This ground-breaking book will change the way we think of, farm and grow food. Author and radical farmer Charles Massy explores transformative and regenerative agriculture and the vital connection between our soil and our health. It is a story of how a grassroots revolution - a true underground insurgency - can save the planet, help turn climate change around, and build healthy people and healthy communities, pivoting significantly on our relationship with growing and consuming food. PenguinBooksAus
Trade Paperback; ISBN:9780702253416; September 2017; U.Q.P.

THE AUSTRALIAN NATIVE BEE BOOK

Tim Heard
Keeping native stingless bees is a hot topic in Australia for commercial, environmental and recreational reasons. You can do something about the decline of pollinators by conserving native bees. Paperback September 2016 \$ 35.00 ISBN: 9780646939971
Publisher: Sugarbag Bees



Around the Farm

At a recent GLENRAC event, we were given a few "The Great Idea Bank" folders which contain information on making farmwork easier as we age. The Older Farmers program formed part of the Farm Injury Prevention Project which was funded by the Commonwealth Department of Health and Ageing over a three year period. If you would like a copy—come in and visit us or just pick one up from the front desk. An Information Sheet: Making Work Easier for Older Farmers can be downloaded from this link.



What is DroughtHub?

NSW DroughtHub provides a one-stop online destination for information on a vast range of services and support available to primary producers, their families and communities to prepare for and manage drought. Almost all the state is now in mild to severe drought and the NSW Government is committed to working closely with farmers, their families and rural communities. DPI makes every attempt to ensure the information supplied is current, however the individual circumstances of DroughtHub users should be taken into account when considering the linked services.

Dry time management Summary

The 7th edition (March 2014) of Managing drought has been prepared to assist the state's farmers in making financial and management decisions which will see them through this extended dry period. This updated publication is designed to act as a management tool for farmers - it is not intended to be a complete manual on running the farm during drought. (Further information is available from the NSW DPI website and NSW DPI offices.)

This sixth edition includes an updated 'Drought planning' section, which is also available as a separate publication (see Primefact 342 Drought planning, 2nd edition).

Business in Mind

Mental health in the workplace

One in five Australians will experience a mental health condition during their lifetime. As the largest employment sector in Australia, small to medium enterprises (SMEs) are likely to encounter mental health issues in their workplace at some point.

Prevention and effective management of mental health conditions in the workplace by SME owners and managers reduces the social and financial impacts, making good business sense.

Common mental health conditions like depression and anxiety may be experienced by business managers or their staff, and can impact on business performance.

Key impacts:

- Lost productivity (through days off work or not working at full capacity).
- Potential damage to relationships with clients, staff or family members.

For more information visit: <http://www.businessinmind.edu.au/>



Workplace Support Skills

This 3 hour short course covers: stress - impacts and coping techniques
communication skills
signs a person may be

struggling with their mental health
finding and providing help how to help someone at risk of suicide and more...

GLEN INNES When: Thursday 5th July @ 10am - 1pm
Where: NECC Office - Cross Street Church (1 Cross Street)

Community Support Skills

How do you know if someone is struggling with their mental health? How can you talk to someone you're worried about? Want to know more about how, when and where to find help for mental health concerns?

GLEN INNES: When: Thursday 5th July @ 2pm - 3.30pm
Where: NECC Office - Cross Street Church (1 Cross Street)
Cost: Free How to book: email - ctcguyra@gala.org.au
call 6779 2132 or online - www.gala.org.au

RAMHP are asking for expressions of interest from people wishing to do the 2 day "Mental Health First Aid" Workshop
Please contact admin@gala.org.au or ring 02 6779 2132 for more information





Tapping into SoilWater app

TEAM of southern Queensland researchers are on a mission to make the once

costly task of measuring soilwater relatively simple and inexpensive.



F-TRACK LIVE is an on-the-go farm management app that lets multiple users record and access all their farm information

F-track to top management

-TRACK LIVE is an on-the-go farm management app that lets multiple users record and access all their farm information live, wherever they want.

It has been available for iPhones and iPads for more than two years now, helping farm businesses streamline their

notebook records across multiple properties and users. The new F-Track Version 2.0 includes an improved visual display, customisable interface (modular display), crossplatform app (Apple, Android, Windows), live data feeds (weather), more tracking modules (chemical inventory and rainfall), languages, faster recording of farm events and push notification systems to send updated notices and deliver custom reports.

An app born in the paddock for the paddock.

Farmware. James McShane, tested all the farmer-focused apps that came out in his search for an electronic solution to the pocket notebook but he couldn't find anything with the experience he was looking for. So he built the app himself. For More information <http://www.farmweekly.com.au/news/agriculture/general/news/an-app-born-in-the-paddock-for-the-paddock/2713080.aspx>



JAMES McShane tested all the farmer-focused apps that came out in his search for an electronic solution to the pocket

Farm Management

Digital Products and Apps that assist in the management of your cropping and livestock program.

<https://www.thedigitalfarmer.com.au/secondary-category/farm-management>

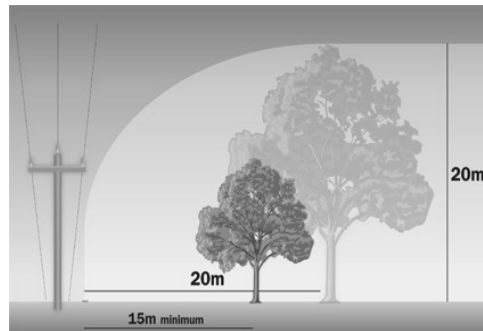
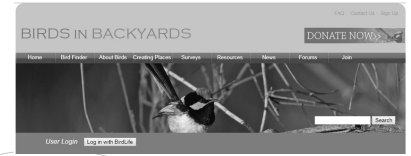
Nest Box Plans

Birds in Backyards has developed a series of nest box plans for a range of Australian birds. There are nest boxes for 13 different birds, so we have made sure there is a nest box suitable for wherever you live. Some birds, like Rainbow Lorikeets and Sulphur-crested Cockatoos, are breeding fine in our parks, remnants and gardens, so we have targeted some less common and less well known birds in our plans.

Remember, nest boxes are only part of the solution - we need to make sure our birds have suitable habitat in our suburbs as well, so don't forget to keep planting in your garden - see our section on backyard habitat planting.

Coming soon - some more step by step visual guides to accompany the plans. http://birdsinboxyards.net/Nest-Box-Plans?_ga=2.18524089.1445711165.1529373980-256569300.1513211447

Also for sale from David Halloran Armidale 02 6772 2325



Beware power poles when planting!

Look up before you plant

Consider how big the tree or vegetation will grow and what will be affected.

Plant taller varieties furthest away from the powerlines using the planting guide above.

Remember that access to powerlines is required for maintenance and repairs in the future.

Select appropriate plant species that are native to the area.

Avoid plant species that could invade the surrounding environment.

Tall growing species including the trees showing in our Unsuitable Trees Guide are unsuitable under or near powerlines

In some instances, a property owner may be responsible for the cost of managing tree trimming or removal of trees planted close to powerlines. Download the guide.

<https://www.essentialenergy.com.au/-/media/Project/EssentialEnergy/Website/Files/Our-Network/PBYP.pdf?la=en&hash=052300C08288A16A9D604A69EF977848F3F38C4F>



AgriFutures

Australia

New online platform maps Australia's

renewable energy hotspots

A new online platform called AREMI identifies the location, availability and volume of biomass, and has been flagged as a pivotal tool to boost investment in Australia's renewable energy sector.

Learn more about the Australian Renewable Energy Mapping Infrastructure (AREMI) platform: arena.gov.au/projects/aremi-project/

Explore AREMI: nationalmap.gov.au/renewables

The Australian Biomass and Bioenergy Assessment (ABBA) is managed by AgriFutures Australia and funded by the Australian Renewable Energy Agency (ARENA).

GLEN INNES ROLLOUT OF STAGE TWO NEW RECYCLING BINS

Glen Innes Severn Council is rolling out 2,000 new 240 litre mobile recycling bins for Glen Innes residents. The new yellow lidded bins are specifically for recyclable materials and will replace the aging old green lidded bins currently in use.

General Manager, Hein Basson, said that nearly 50% of general waste can be composted. "Composting minimises the amount of waste going to landfill, so there is a great opportunity here for residents to make their own composting kit from their old bin."

Residents wishing to keep their old bins need to contact Glen Industries on 6732 1648 or email

to www.glenindustries.com.au (link is external) by 28 July 2017. Unregistered old bins will be automatically collected after that date. Further information on the rollout of the new bins can be obtained by contacting Greg Doman at Council's Church Street office on 6730 2350.

NEWA: Weed Officers are on hand to assist with your noxious weed identification, management and control.

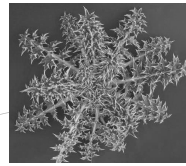
Visit www.newa.com.au or Phone 6770 3602



Glen Innes Severn
Luke Turner
0438 501 286



Armidale
Regional
Robert Williams
0439 711 701



Controlling Nodding Thistle

Nodding thistle (*Carduus nutans*) was introduced into Australia through imported pasture seed back in the 1940's. Like most of the thistles, they are very spiny, establish in dense patches and are not palatable to stock or wildlife. It is estimated that nodding thistles now infest about 1 million hectares of the NSW tablelands.

Nodding thistles have very distinctive flowers which droop at right angles to the stem, that's where they get the name 'nodding thistle' or 'noddors'.

Nodding thistles have a long flowering season usually from November to April. They produce huge amounts of long lasting seed and can germinate and grow at any time of the year providing conditions are suitable - all of which make it a very aggressive competitor in pastures and grasslands. These attributes also make it difficult to control - particularly in our more fertile soils.



Nodding thistles require a period of chilling (vernalisation) which the New England winter provides and as a result they have established extensively in the region. Control methods include physical removal, herbicides, grazing management and pasture improvement. Given the longevity of the seed a management plan will need to extend over a number of years. All landholders have a General Biosecurity Duty under the Biosecurity Act 2015 to control Nodding thistle on their land so as to prevent their spread to neighbouring properties via

wind blown seed. Management obligation for this and other regional priority weeds can be found at our website newa.com.au under the tab 'Weed Control Management Plans'.



Funding and Scholarship Opportunities

MORE THAN \$584 MILLION TO HELP DROUGHT-AFFECTED FARMERS

How do I get more information?

Visit the Drought Hub - one-stop online page with information regarding drought. Google 'droughthub' or visit www.dpi.nsw.gov.au/climate-and-emergencies/droughthub.

Northern Tablelands Local Land Services Head Office: 02 6720 8300

NSW Rural Assistance Authority

Did you know... A Farm Business Skills Professional Development Program has been developed to support farm business in all conditions, but particularly in relation to preparing for and responding to drought? Approved participants can claim up to \$5000 for individuals and \$9000 for farm businesses to cover 50% of course costs.

The pre-approved course upskill participants in:

- Risk management
 - Financial and business management
 - Farm business planning/drought preparedness
- For more information and a list of available courses visit <http://bit.ly/2sgskTH> or call the NSW Rural Assistance Authority on 1800 678 593

Nominations are now open for the 2018 Hidden Treasures Honour Roll.

Women are so often the backbone of our communities and work tirelessly and quietly behind the scenes to ensure crucial community groups and services survive.

The NSW Department of Primary Industries' (DPI) Rural Women's Network initiated the Hidden Treasures project in 2010 as a special way of acknowledging and celebrating the work of these remarkable women.

We are seeking your help to uncover female volunteers within NSW rural communities to be included in the 2018 Hidden Treasures Honour Roll. You can nominate anyone who is making a difference in your community. This year we are extremely proud to welcome our Aboriginal Ambassador Ms Ann Weldon, who is encouraging nomination and recognition of indigenous women throughout the state.

All rural women nominated will be included in the Honour Roll which will be unveiled at the NSW Rural Women's Gathering in Merimbula from 19-21 October.

You can nominate a Hidden Treasures' volunteer online at: <https://bit.ly/2kFoMX7> or call 02 6391 3612. Tell us a short 'story' about why your nominee is worthy.

Don't forget we need these completed nominations by Monday 30 July 2018!



More than six million Australian volunteers give of their time each year. Research shows that those volunteers are happier as a result. Whether it's one hour or an ongoing commitment, by giving a little you can change a lot.



Biodiversity Conservation Trust

Conservation Management Program

In a follow-up to the Biodiversity Conservation Trust (BCT) breakfast held on the 4th April, the BCT have announced a Conservation Partners Program. For those interested see links: [Guide for Landholders](#), [Application form](#)



TRAINING OPPORTUNITY - SKILLSETS & PART QUALIFICATIONS

Do you live or work in NSW? There is an opportunity to do some nationally accredited training- fully subsidised by the NSW Government. Rural Biz Training have put together some useful small packages of units that suit many farmers or you can tailor your own. You can use any units you complete as part of a related full qualification in the future. For more information click here. <http://www.ruralbiztraining.com.au/>

BBM Youth Awards

BBM Youth Support has just opened applications to their Awards program, offering successful applicants \$8,000 to travel overseas to develop specialist skills and widen their networks abroad. Total students have been successful over the years in receiving this award. Applications close 31st July. bbm.asn.au



AGRIBUSINESS SCHOLARSHIP ON OFFER

Agribusiness Australia is offering \$1000/year for three consecutive years of study in a university agriculture-related degree for all final-year secondary students. Deadline 27 July. More? [Click here](#)

THERE IS NOW A SHARPS DISPOSAL RECEPTACLE AT THE GLEN INNES DUMP.

The container is located near the weighbridge, near the Community Recycling Centre. Livestock needles welcome

GLENRAC OPERATING COMMITTEE 2017/18

CHAIRMAN - John Bavea

VICE CHAIR - Ian Lockwood **TREASURER** - Sam Baker **SECRETARY** - Tony Corcoran

LANDHOLDER & DEPARTMENT REPRESENTATIVES:

Andrew Campbell, Chris Leahy, Jane Munro, Jim Benton, Mark Donovan, Mike Norton, Rose Gettens, Sandy Fitzgerald.

Glen Innes Severn Council : Graham Price, Ian Trow & Col Price

Department of Primary Industries : Carol Harris ,

National Parks & Wildlife Office: Dr. Peter Croft

Glen Innes Local Aboriginal Lands Council: Jayden Potter

Public Officer: Mark Donovan

For all questions relating to GLENRAC please contact our staff at -

68 Church Street (PO Box 660) GLEN INNES NSW 2370

Ph: (02) 6732 3443

Mobile 0427 325 901

email kylie@glenrac.org.au

GLENRAC
PO Box 660
GLEN INNES
NSW 2370



To The Land Manager

This activity is part of the Local Landcare Coordinators Initiative



**Local Land
Services**

The Local Landcare Coordinators Initiative is funded by the NSW Government, and is supported through the partnership of Local Land Services and Landcare NSW.



Landcare
New South Wales



Glen Innes Natural Resources Advisory Committee

Coming Events:

- 4 July On Farm Biosecurity Planning and LPA Update 11:00am - 3:00pm
- 9-10 July SMARTtrain Chemical Application Level 3 Training Course, Glen Innes
- 19 July GLENRAC Focus - Taking the stress out of difficult (family/business) conversations
- 16 Aug GLENRAC Focus - Get Your Grant workshop Time
- 5 Sept Using Your Ipad or iphone to make films workshop Time
- 7 Sept Threatened Species Day Event
- 13 Sept Fit Farmers, Ben Lomond
- 20 Sept GLENRAC Annual General Meeting—Glen Innes District Services Club 7.00pm
- 15 Oct Media Messaging workshop with Stephanie Dale, Land Girls
- October Facebook workshop with Louise Scott