

GLENRAC

Newsletter

July /Sept 2017

Where to find us - National Parks & Wildlife
Services Building, 68 Church St
Office Hours— Mon to Fri 9am to 5pm

Inside This Issue

- Good news
- Workshop updates
- New Books
- War on waste
- Renewable Energy
- Funding opportunities
- Coming Events

New @ GLENRAC



FOLLOW US ON

Instagram



Local Land
Services
Northern Tablelands



Local Land
Services



NT LLS Trees on Farms Creating Habitat Connections and Enhancing Biodiversity on Farms

GLENRAC is partnering with the Northern Tablelands Local Land Services to deliver investment funding to promote planting of native vegetation and enable 'small' land holders within the Northern Tablelands region to implement revegetation works. This project will promote the value of native vegetation and give landholders the opportunity to focus on the management and benefits of native vegetation in the peri urban and farming landscape.

This funding will enable GLENRAC to support 10000 trees to be planted and hold two tree focused community events.

Expressions of interest will be called for in the next few months.

Carol Harris, GLENRAC board member successful funding for new project at Ag Station

Seven innovative NSW Department of Primary Industries (DPI) projects to better manage significant weeds and animal pests have been funded through the Australian Government's Agricultural Competitiveness White Paper.

Seven innovative NSW Department of Primary Industries (DPI) projects to better manage significant weeds and animal pests have been funded through the Australian Government's Agricultural Competitiveness White Paper.

"Reducing Chilean needle grass seed banks using essential oil products".

Northern Tablelands Local Land Services board election results

GLENRAC Chair, Jim Benton has become an appointed member of the Northern Tablelands Local Land Services board. Other members include the Chair, Hans Hietbrink, Graham Marriott, Inverell and Maria Woods, Walcha. The elected members include Tim Norton, Walcha, Ross King, Walcha and David Worsely, Nullamanna.

GLENRAC Matters

Hello GLENRAC members,

We are coming to the end of another full financial year. Highlights have included staff member, Kelly Walsh winning the Young Landcare Leader Award and she will be representing us at the State conference in October. We hosted a highly successful Grasslands pasture update with 115 producers connecting with current industry research and researchers as well as networking with fellow producers; Communication & Negotiation Training with Allan Parker, three Creating Confident Community Groups workshops, a very interesting Biosecurity workshop and many other workshops and field days along the way. We would like to extend our thanks to you, our members for your participation and support as we continue to initiate and coordinate action for landholders and the community to manage and maintain the natural resource base of the Glen Innes region for the improvement of both the social and productive environment.

Regards, GLENRAC Staff—Kylie, Lucy, Tanya, Jennie & Kelly

GLENRAC Workshops

DRONES

It's the technology making farming faster, easier and more efficient.



And it's easier to access than you think. GLENRAC hosted two workshops on Friday to introduce local landholders to the latest drone technology, and how to use it.

Ben Watts of Bralca.com and Russel Smith from New England Weeds Authority presented to a crowd of interested farmers who were keen to learn more about how drones can help improve day-to-day practices and the rules and regulations involved.

Mr Smith said drones are useful to reduce the labour and vehicle costs in monitoring weed infestations and the effectiveness of control programs.

Mr Watts, who got involved with the technology about five years ago, explained how drones can capture images that can monitor pastures or fly right down to a heifer and capture a picture so clear it can even detect pinkeye. "You can really start to make informed decisions about what's happening in a paddock," Mr Watts said. "It's really just about getting information in, prioritising tasks and possibly reducing travel."

He said a drone can be useful for jobs such as water runs. "If you've got nice soft country and you're checking water in a ute - you've still got to be out there but maybe you don't have to be out there as often through using a drone."

Mr Watts said thanks to increased supply in the drone market, the devices are becoming very affordable. He said it was also important to make sure not to always go for the biggest and most expensive drone - but to consider exactly what you will need it for.

Local landholder Pat Carney attended the workshop at Stonehenge and said he was impressed with just how useful the devices could be. "I don't know much at all about drones so I came out here to find out what the rules and regulations are and what uses they have," he said. "So far I'm quite impressed with them actually."

He said a few years ago he might have been hesitant to consider getting a drone because of how difficult they

were to use however improving technology over the years has made them much easier.

"They are a lot easier to fly now than they were a few years ago and they're pretty hard to crash," he said. Rick Shands said before the workshops he wasn't sure how he would utilise such an instrument, but now had a better understanding. "It has sparked my interest," Mr Shands said.

"I would probably use it for checking cows and checking paddocks."

The other workshop was held at the Dundee Hall.

To find out more about airspace law visit

www.casa.gov.au.

Creating Confident Committees

Community group committees and boards from around the Glen Innes Severn district are feeling more confident about their organisations following workshops hosted by GLENRAC and Glen Innes Severn Council recently. Governance, purpose and communication were all highlighted as important features of effective committees to the nearly 50 people who attended the workshops.

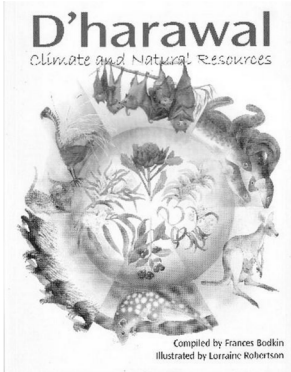
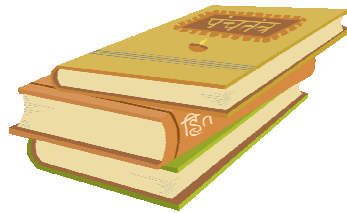
Ron Palmer from Not For Profit Success presented the workshops, with more than 30 years experience in being part of not for profit community groups and corporate boards. Members of a wide variety of committees and boards attended the workshops, including Dundee Reserve Trust, Glen Innes Pre School, Glen Innes Sports Council, P&C Associations, Hall Committees and the Emmaville Mining Museum.

Participants enjoyed the interactive delivery style of the presenter and the many real life examples he shared from his experiences on board and committees. The level of confidence and enthusiasm from attendees grew as the session progressed.

"Many people join a committee is because they are the last one to say no, and they aren't sure if they have the skills or understand the role, this workshop has given people the confidence to look at the purpose of their organisation and the role that they play in achieving that purpose" said Project Manager, Jennie Coldham.

The workshops were generously supported by Glen Innes Severn Council, and GLENRAC plan to partner with them again to deliver more training for Landcare and community groups into the future.

New Books



D'harawal Climate and Natural Resources

Traditionally Aboriginal peoples cared for the land, living as one with it. This custodial relationship, expressed through cultural practices, sustained the natural environment and secured the viability of resources necessary to sustain

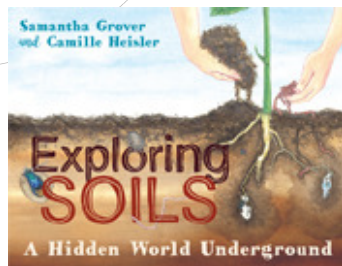
the continuing existence of Aboriginal society over many millennia.

This book containing the words of Frances Bodkin and visual imagery of Lorraine Robertson will take you on a journey of understanding the ancient knowledge of the original People of This Land of the D'harawals.

\$24.95 <http://www.booktopia.com.au/d-harawal-climate-and-natural-resources-frances-bodkin/prod9780858812451.html>

Exploring Soils

A Hidden World Underground Samantha Grover, Camille Heisler
In this delightful children's book, *Exploring Soils: A Hidden World Underground*,



James, an aspiring soil scientist, discovers that soil is not just dirt for digging in. He explores how plants and animals live in soil, how soils are formed, how they differ, and the ways that soil is essential in our lives.

Hardback June 2017 \$ 24.95 ISBN: 9781486305001
Publisher: CSIRO Publishing



The most comprehensive and beautifully illustrated field guide to Australia's unique birdlife.

Australia's avifauna is large, diverse and spectacular, reflecting the continent's impressive range of habitats and evolutionary history. With specially commissioned paintings of over 900 species,

The Australian Bird Guide is the most

comprehensive field guide to Australian birds ever seen. Paperback May 2017 \$ 49.95

ISBN: 9780643097544 Publisher: CSIRO Publishing

National Tree Day aims to inspire, educate and recruit Australians to actively care for our unique land and create future generations of committed environmental custodians. Trees truly are the lungs of the planet, giving us fresh clean air, storing carbon, providing shade and habitat for wildlife. The benefits are seemingly endless. There are many reasons why planting native plants that are local to your area (also known as local provenance) is important.

Plants help to combat climate change by locking up carbon, but there are more ways that native plants can help address the impacts of climate change. Before Climate Change was the "hot" topic in the environmental debate, the loss of biodiversity was internationally recognised as being the major threat facing the future of life on our planet. For more information <http://treeday.planetark.org/> Dates this year—**Schools Tree Day Friday 28th July 2017 and National Tree Day Sunday 30th July 2017**

Key Biodiversity Areas (KBAs) – the most important places left for life on Earth, and the stunning unique Australian landscapes that are home to some of our most threatened birds.



KBAs are identified using globally standardised, scientific criteria – a world first in conservation. Flora and fauna data collected by research organisations, including BirdLife Australia, is used to identify KBAs.

An assessment of the current state of Australia's KBAs paints a grim picture for threatened birds. In 2017, 19 KBAs have been declared 'in danger' of losing the environmental values that make them important. Each of these KBAs in Danger provides habitat for species that could soon become extinct should current threats persist. We're working hard to conserve our most important sites for birds and nature, but we can't do it alone. We rely on our network of volunteers to help us monitor and protect these important places, right across the country. The data collected within KBAs not only identifies them, it underpins our conservation actions, and informs decisions surrounding their protection and management. And with only 20% of KBAs formally protected we are always keen to have more volunteers on board to monitor these sites, year-round, through Birddata, or by becoming KBA Guardians.

Don't forget to download a map of KBAs within 100km of your capital city or check out our interactive map to find your local KBA. You can also continue the KBA conversation by grabbing a limited edition KBA pack, including a KBAs in Danger pin set and a copy of the KBAs in Danger report. There are only 100 packs available, so be quick! <http://birdlife.org.au/campaigns>

Managing Waste – Reducing, Re-using, Recycling

Types of Waste

Managing waste properly is critical to maintaining the health and viability of your property and the surrounding land and waterways. Rural residential properties typically have a wide range of wastes to deal with, including:

- Household wastes - excess packaging usually picked up by recycling and garbage services in suburban areas, but often not in rural areas.
- Organic matter (such as animal manure, vegetation and food scraps)
- Chemicals (such as herbicides, insecticides and fertilisers)
- Large waste items - such as batteries, tyres, oils, old machinery
- Dead animals - particularly larger livestock such as cows and horses. Managing each of these waste streams sustainably will help to keep your property functioning and can even save you time and money. There are three main steps to reducing waste: Reduce, Reuse and Recycle.

The initial step of reducing waste is to avoid bringing it home in the first place. Be mindful of the products you buy and how they are packaged. Are there alternatives available that have less packaging? Is there packaging that can be composted or recycled?

Reuse - Reusing items, instead of disposing of them saves you money on landfill costs, and on purchasing new items. Before throwing things away, ask yourself; can the item be safely used for any other purpose on your property? Could someone else use your waste, such as neighbours or charity?

Recycle - Recycling waste means your waste materials are reprocessed into new products. Materials can be recycled include plastic, glass, paper and cardboard, steel, aluminium and other metals, batteries, mobile phones, oil and tyres. There are some specific programs available for recycling items such as mobile phones (which contain heavy metals) and **drumMUSTER**— a national program for the collection and recycling of empty, cleaned, non-returnable crop production and on-farm animal health chemical containers. Your Local Council can inform you about specific waste recycling programs in your area.

Composting - One of the easiest ways to reduce and recycle waste on a rural residential property is by composting all organic matter. Organic matter is any item derived from plants or animals, including straw, saw dust, paper, plant cuttings, food waste, animal manures, etc.

<http://www.environment.nsw.gov.au/>

questions/composting-and-worm-farms

Chemicals - Never dispose of chemical wastes on your property - any leaks will pollute your soil, groundwater and streams. Chemical wastes may not be accepted at all landfill sites (due to risks of leaks) but there are alternatives available. **ChemClear** is a national program coordinating collection and disposal of unwanted rural chemicals.

General Waste - Other household and rural wastes should also be recycled or disposed of at properly managed landfill sites. Many products today contain materials that release toxins when disposed of (for example most electronic equipment contains heavy metals) and landfill sites are managed in ways to help stop toxins leaking into the environment. Dumping of waste on private land is illegal, with heavy fines applicable, which is enforced by the NSW Office of Environment and Heritage for more information visit <http://www.epa.nsw.gov.au/waste/index.htm>

Burning off waste is controlled under the *Protection of the Environment Operation Act 1997* and its regulation, the *Protection of the Environment Operations (Clean Air) Regulation 2002*. The regulation provides a general obligation to stop or minimise air pollution. It prohibits burning some articles, including tyres and certain preservative treated timbers, and allows burning of vegetation (on the property where it grew) in the course of carrying out agricultural operations. In some council areas restrictions apply to burning off and it is recommended that you know what these are before you light your first match. Always check with the local Rural Fire Service before you start any burning activities, and never burn off when there is a total fire ban or when the fire danger is high.

Stock and Large Animals - Ask your Veterinarian, Local Council, Rural Supplier or a neighbour about such services or other disposal methods.

PLASTIC FREE JULY

Joining the challenge is quite simple...choose to refuse single-use plastic during July.

Plastic Free July aims to raise awareness of the problems with single-use disposable plastic and challenges people to do something about it.

You'll be joining a million+ people world-wide from 130 countries in making a difference.

More information and to join up:
<http://www.plasticfreejuly.org/>



Renewable Energy in Inverell and Glen Innes

It is possible that Windfarms and other renewable energy farms can be a good thing for the community



with decent returns as long as the community work together - especially the landholder and the neighbours. Landholders also need to be aware of the legal and tax implications when entering agreements. Landowners and other interested parties were given advice at the Inverell forum, "The Farmer, the Finance and the Fine Print", on Monday, June 19, in Inverell.

Landowner Charlie Prell, lawyer Hugh Piper and tax expert Paul Williams made some good points and answered landholders questions.

Ten things to think about:

- 1 Landowners should form strong partnerships with other farmers and their neighbours.
 - 2 Experts warn farmers not to sign license access agreements up front. It is still possible to get retrospective agreements.
 - 3 There are different types of income that can be gained from the development of a windfarm, and landowners should seek equity stakes.
 - 4 Farmers are warned to ensure that there is a gross up clause in their agreements with developers.
 - 5 Beware of income tax traps.
 - 6 The tax expert at the meeting advised farmers to see if they could work their way into small business concessions, remembering that land is an active asset.
 - 7 It is important for farmers to seek regular update meetings with the project manager of the construction company.
 - 8 Land tax exemptions may be affected by the construction of a wind farm.
 - 9 Farmers could create value with a Self Managed Super Fund strategy.
 - 10 Good law is common sense, and for the most positive experience and best returns farmers need to preserve control of their lawyer and land.
- Good communication** is the key to a good deal of mutual benefit. For full story go to link <http://www.inverelltimes.com.au/story/4740393/ten-tips-for-farmers-near-wind-farms/>

DEER IN LANDHOLDERS' SIGHTS AS MANAGEMENT LAWS CHANGED

THE State Government is cracking down on exploding wild deer population around Glen Innes and Inverell, with new deer management strategies announced as part of the response to the NSW Natural Resource Commission's (NRC) review of pest animal management. Member for Northern Tablelands Adam Marshall welcomed today's government response, saying it would help landholders and the community put a check on the fast-growing wild deer population in the region.

The NRC's state-wide review made 33 recommendations to government for improving the management of pest animals across public and private land. It aims to minimise their impact on agriculture, the environment and the community.

"Wild deer are a common sight around Glen Innes and Inverell, particularly in the woods of Emmaville and around Copeton Dam - posing a hazard for drivers, a continual frustration for landholders and impacting the environment for native animals," Mr Marshall said.

"While wild deer will be retained as a game species under the *Game and Feral Animal Control Act 2002*, in hotspot areas that includes the Glen Innes LGA, the NSW Government will allow greater control options, including suspending licence restrictions for deer hunting," Mr Marshall said.

"These suspensions allow game hunting licence holders to hunt in ways that would otherwise be prohibited. Changes in the hunting season includes; the use of spotlights or electronic devices; hunting of game fleeing fire or smoke; use of aircraft, watercraft or motor vehicles; use of baits, lures or decoys; or hunting at night."

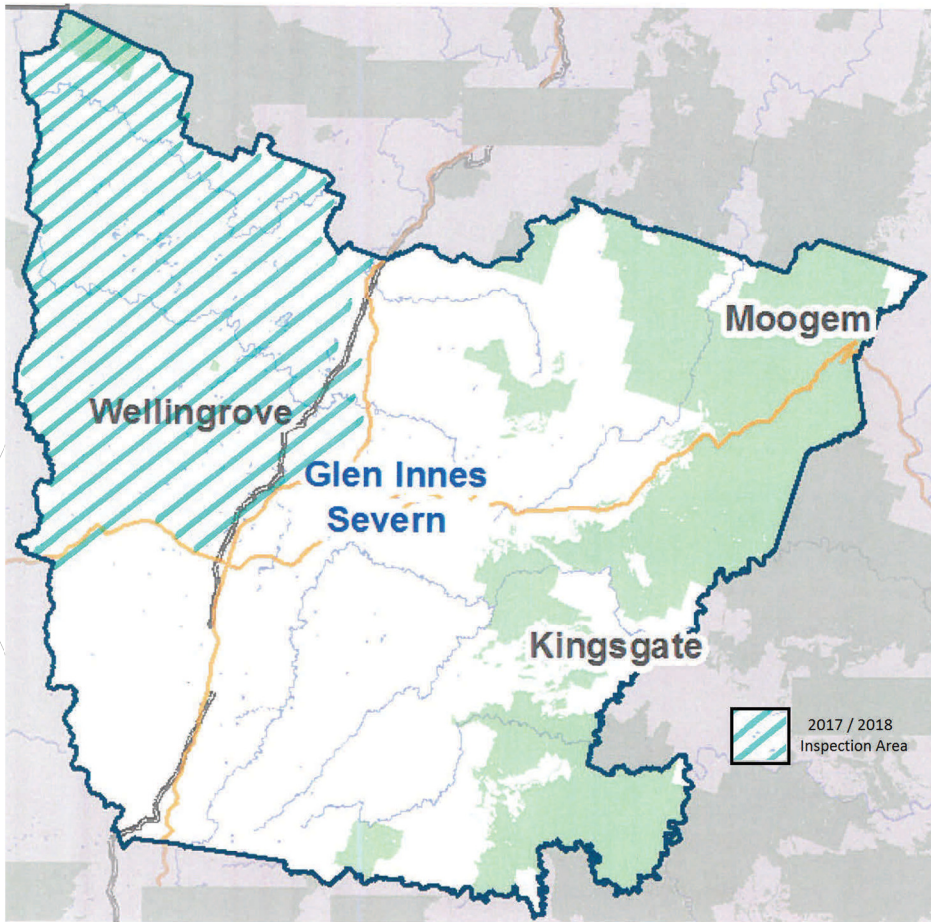
Although landholder members and employees will continue to be exempt from any deer hunting restrictions on their own land, the Government will provide a landholder register and hunter register in Glen Innes Severn Council. This will allow licensed and reputable hunters to be better utilised in the fight against pests.

For more information on hunting regulations, requirements and suspensions, visit the DPI website at www.dpi.nsw.gov.au/hunting. The full NSW Government response to the NRC review is available on the DPI website at www.dpi.nsw.gov.au/biosecurity



Weed update

Property Inspections for Weeds



management of existing weeds in the area including serrated tussock, nodding thistle and a number of grass weeds. A key part of our role however, is to be on the lookout for new and emerging weeds in the region. These may be introduced through bringing in feed, livestock and equipment from outside the area. Inspectors are also on the lookout for aquatic weeds which adversely impact the natural values of our waterways and have a significant impact on both agriculture and domestic water supplies. NEWA staff are happy to provide advice on managing weed infestations on your property. We also encourage landholders to accompany our inspectors whilst they inspect your property. If you would like to discuss impending inspections please contact your local Weeds Inspector.

As part of our annual operations in controlling weeds on the Northern Tablelands, New England Weeds Authority (NEWA) will be inspecting properties in the following areas during 2017 / 2018.

The new Biosecurity Act 2015 will replace the old Noxious Weed Act from the 1st July, 2017. A key concept behind this new legislation is that everyone has a General Biosecurity Duty. This requires anyone dealing with a biosecurity risk, whether it be weeds, pests or diseases, must ensure the risk is prevented, eliminated or minimised. From a weed perspective this means landholders and managers must manage weeds on their land to reduce or prevent them impacting surrounding land.

Property inspections allow us to monitor all land for weed growth and map the presence of weeds throughout the New England. This will allow for more targeted and informed weed management and control.

We spend significant effort monitoring the ongoing

NEWA: Weed Officers are on hand to assist with your noxious weed identification, management and control.

Visit www.newa.com.au or Phone 6770 3602



Glen Innes Severn
Luke Turner
0438 501 286



Armidale Regional
Robert Williams
0439 711 701



Funding and Scholarship Opportunities

There have been a number of new funding rounds announced. GLENRAC will be applying for funding on behalf of the Glen Innes district. If you have ideas you would like to put forward to have funded please contact us at the office. 02 6732 3443



Small Environmental Grant Scheme

The Small Environmental Grant Scheme will provide support for groups or

individuals undertaking projects that will make a positive difference to the natural living environment, in land, sea or air, rural or urban. At the moment we are looking f... more details by 27/07/2017

Community Building Partnership



Applications for the 2017 program are now open. You can apply via this website once applications open We are seeking funding applications for community infrastructure projects that: promote community participation, inclusion and cohesion delive... more details By 09/08/2017



Grants for Gardens

This year's Yates Junior Landcare Garden Grants program is offering 15 grants for fun, hands-on garden projects that will help young people learn about gardening, sustainability and our natural environment! ... more details

ANZ Seeds of Renewal

The ANZ Seeds of Renewal Program, which has been running since 2003, demonstrates ANZ's belief in vibrant, sustainable rural communities.

The program focuses specifically on supporting education and employment initiatives that support local economies in rural, regional and remote areas, with consideration given to projects that benefit communities with a population of fewer than 15,000 people. Applications open 4th July till 5pm on Friday, 4 August 2017 More details:

<http://www.frrr.org.au/grants/ANZ-seeds-of-renewal>



The Young Farmer Business Program (YFBP) survey is now open! It's your opportunity to help shape this new program.

This short survey is designed to assist the YFBP to understand what assistance young farmers require over the next 12 months to enhance their business skills and opportunities in agriculture.

Your feedback will be crucial in helping us to design the first 6-12 months of activities making sure we design what you need!

Please answer this short survey if :

-You are a young farmer in NSW running a farming business? Or

-You have aspirations as a young farmer to start your own farming business in the next 1-2 years?

START SURVEY

If you don't fit these categories we ask you to assist us by sharing the survey with your networks. <https://www.surveymonkey.com/r/YFBPsurvey>

The Young Farmer Business Program is a 4 year initiative to: Provide young farmers with access to new business ideas, tools, products and services relevant to their skills, knowledge and experience; Promote and create opportunities for young farmers to connect with other farmers and business networks.

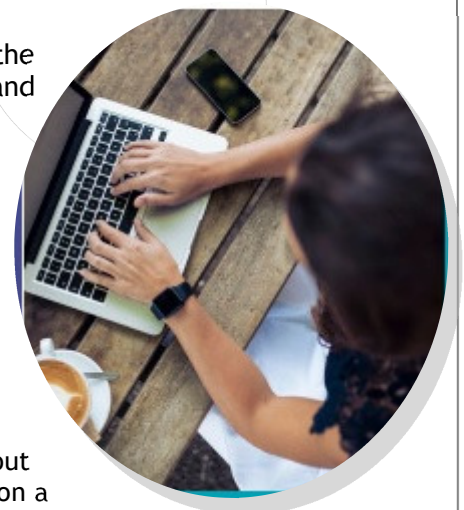
In partnership with the Office For Women and supported by the Australian government,

Inspiring Rare

Birds

is providing 100 scholarships for female entrepreneurs (emerging or established) throughout

Australia to embark on a mentorship with a high calibre mentor to help them grow their business. Applications close 30 July 2017 For more information and to apply, visit <http://www.inspiringrarebirds.com/inspiring-mentoring-scholarships/>



Applications close 30 July 2017 For more information and to apply, visit <http://www.inspiringrarebirds.com/inspiring-mentoring-scholarships/>

GLENRAC OPERATING COMMITTEE 2016/17

CHAIRMAN - Jim Benton

TREASURER - Sam Baker

SECRETARY - Tony Corcoran

LANDHOLDER & DEPARTMENT REPRESENTATIVES:

Andrew Campbell, Chris Leahy, Gordon Wollen, Ian Lockwood, Jane Munro, John Bavea, Mike Norton, Norman Whitaker & Rose Gettens.

Glen Innes Severn Council : Graham Price or Ian Trow & Col Price

Department of Primary Industries : Carol Harris , **National Parks & Wildlife Office**: Peter Croft

Glen Innes Local Aboriginal Lands Council: Trevor Potter

Public Officer: John Brien

For all questions relating to GLENRAC please contact our staff at -

68 Church Street (PO Box 660) GLEN INNES NSW 2370

Ph: (02) 6732 3443

Mobile 0427 325 901

email kylie@glenrac.org.au

GLENRAC
PO Box 660
GLEN INNES
NSW 2370



To The Land Manager

This activity is part of the Local Landcare Coordinators Initiative



Local Land Services

The Local Landcare Coordinators Initiative is funded by the NSW Government, and is supported through the partnership of Local Land Services and Landcare NSW.



Glen Innes Natural Resources Advisory Committee

Coming Events:

- 1 July Livestock safe handling and welfare, Glen Innes Phone 02 6763 1276
- 14 July 2nd Property planning day
- 25, 26 Jul Grassland Society of NSW Biennial Conference
- 16 Aug 3rd Property planning day
- 18 Aug GLENRAC Board Meeting
- 13 Sept 4th Property planning day
- 14 Sept Fit Farmers Event - Pinkett
- 21 Sept GLENRAC AGM
- 11 Oct Final Property planning day
- 14 Oct Landgirls - Julia Telford: Farm Office Efficiency
- 25- 27 Oct 2017 NSW Landcare & Local Land Services Conference, Albury