

# GLENRAC

# Newsletter

March/April 2013

Where to find us - National Park & Wildlife  
Services Building, 68 Church St  
Office Hours— Mon to Fri 9am to 5pm

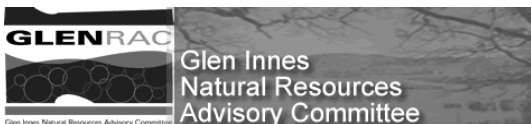
## Inside This Issue

- *Project Snapshot*
- *LLS meeting in Glen Innes*
- *Tropical Soda Apple*
- *Funding Opportunities*
- *Coming Events Dates*

## Landcare Adventure Bingara

Upper Gwydir Landcare Assoc. will  
host this year's Landcare Adventure  
on the **19 & 20 March 2013**

Registrations forms now  
on the GLENRAC  
website. Registrations  
close 11th March 2013.



**Catchment Management  
Authority**  
Northern Rivers



**Catchment Management  
Authority**  
Border Rivers—Gwydir



CARING  
FOR  
OUR  
COUNTRY



## Productive Farms & Healthy Rivers field day

GLENRAC will host a field day for interested landholders at Dundee on **Thursday 14<sup>th</sup> March**. The field day will cover a broad range of topics relating to property management planning and implementation, weed control along waterways, coordinated pest animal control and how to apply for funding.

The field day aims to bring together a number of relevant topics in short, sharp sessions for landholders to become better equipped to develop, plan and implement their property management plans.

In 2012 GLENRAC commissioned Soil Conservation Service to complete a River Reach Plan for the Severn River from the headwaters to the junction with the McIntyre River. The results of this plan will be discussed at the field day and give a snapshot of the condition and health along the Severn River.

One of the key issues identified along the river was the need for ongoing weed control. Key weeds identified were honey locust, willow, blackberry, privet, Tree of Heaven. As weed control along waterways is often problematic this will be addressed at the field day.

GLENRAC Community Support Officer, Kylie Falconer says "this field day brings together a wide range of topics, including hearing from local landholder Greg Chappell, who has implemented their property management plan in conjunction with a catchment based, river reach plan for the Mann River. Greg will give us an insight into the level of planning needed to implement a large scale project, the successes and the pitfalls".

GLENRAC staff will be available on the day to spend time with landholders who are interested in developing their property plans and applying for future funding through GLENRAC.

The field day is open to anyone interested in attending and GLENRAC would encourage land managers who would like to apply for funding now and the future particularly to attend.

If you would like to attend this event please RSVP by the 11<sup>th</sup> March to GLENRAC on 02 6732 3443.



# GLENRAC News

Hello All,

We hope you enjoy this edition of GLENRAC News. GLENRAC staff have been busy working on projects, the majority of which are due to be completed in June 2013. If you currently have a project with GLENRAC please supply final photos and invoices promptly to ensure we are able to meet our deadlines. Did you see us at the Glen Innes Show? If not, parts of this display are now up at the GLENRAC office.

In addition to current projects, we are also busy applying for future funding now open from the Federal Government, including the Community Landcare Groups (see Page 7), if you have an idea for your Landcare group or group of like-minded land managers please be sure and talk to us.

March is a busy month for field day and we look forward to seeing many of you at the diverse range of events we will be running— Pest Animal Control training, Productive Farms & Healthy Rivers, Landcare Adventure and Coolatai grass management and control. Please RSVP if you will be attending any of these events. Regards, Kylie Falconer



## Bright Ideas

### New & Free— SoilMapp app

Australia's national soil databases are now be accessed in real time online through this new free iPad app. SoilMapp provides open access to the most up-to-date information for soil at any location in the country within a matter of seconds. It allows users to view maps, photographs, satellite images and data about local soils and learn about soils on their property. Including information such as soil depth, acidity, salinity, soil carbon and other attributes to help land managers make on the spot decisions.

SoilMapp is the first app developed by CSIRO and was launched in 2012. Go to iTunes to download.

### Free CliMATE app

CliMate, a free app developed for the Managing Climate Variability program allows farmers to interrogate climate records for the past 60 years and learn about rainfall, temperature radiation, as well as derived variables such as soil water and soil nitrate. A web version is to be released during March. Go to iTunes to download.

**Recycling Tips** Did you know? You can recycle used oil from farm machinery the local Glen Innes Severn Waste Facility? Used oil can be cleaned from contaminants and recycled again and again. For more information on collecting used oil contact GISC on 02 6730 2350 or visit [www.oilrecycling.com.au](http://www.oilrecycling.com.au)

## Local Land Services

### Community Consultation well attended

The Local Land Services (LLS) Stakeholder Reference Panel hosted a public consultation meeting in Glen Innes on Tuesday 26 February. This meeting was well attended with around 180 people from across the New England region attending. GLENRAC would like to thank all our members who made time to attend and have their say on this important matter.

Chairman of the Reference Panel, Dr. John Keniry was on hand to answer questions raised by attendees on a range of issues including ongoing funding for natural resource management activities, proposed rating structure, range of services that will be available

The purpose of these workshops is to allow community and stakeholders to have their say on the four main pillars of LLS being boundaries, governance, services and the rating framework.

If you didn't attend the meeting and would like to participate in the consultation process you can access a survey and the workshop questionnaire sheets at the Have Your Say website - [www.haveyoursay.nsw.gov.au/locallandservices](http://www.haveyoursay.nsw.gov.au/locallandservices)

If you do not have access to the internet and would like to complete the questionnaire sheets contact the GLENRAC office and we can print them off for you.

The reference panel will accept written submissions by post or email until the end of March 2013.

Submissions can be posted to -

**Local Land Services**  
PO Box 865  
DUBBO NSW 2830

# GLENRAC Project Snapshot

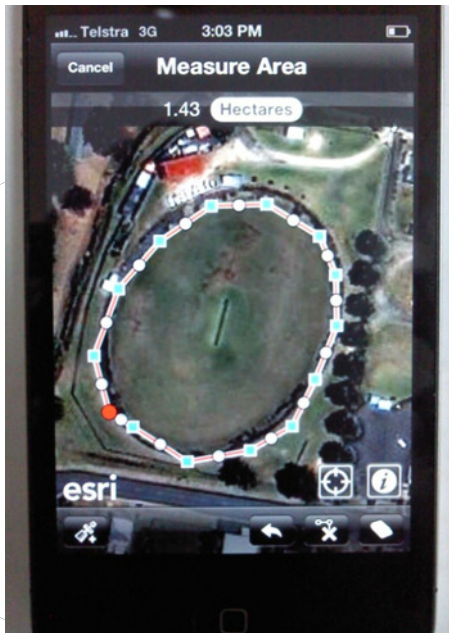


## GLENRAC GIS Snippets

ESRI has a free downloadable application available for Smartphones and Tablets called ArcGIS. It's a great way to discover and use maps.

You can find your location by zooming around the map or use your current location through the phone's inbuilt GPS. You can query the map, search and find interesting information, measure distances and measure areas. You can also share maps with others. Users need to be aware however that the GPS function of your iPhone is relying on the phone coverage. So if you're in an area of poor mobile phone coverage, this app will be limited in its capabilities.

Applications like this can be downloaded at Google Play, the Apple App Store, Amazon Appstore, and Windows Marketplace.



## Pest Animal Control Field Day

GLENRAC hosted a Pest Animal Control field day at the Glen Innes Showgrounds on the 8th February. Ran as part of the Regional Pest Animal Management project the field day was attended by 30 land managers from around the Glen Innes district. The field day brought together a range of highly experienced industry professionals including locals Stuart Boyd-Law, NPWS; Bob Davidson, NE LHPA, Dr. Andrew Biddle, NE LHPA and Mark Lamb, a professional trapper from Tenterfield to present information sessions followed by some excellent displays of pig traps and foot hold traps for foxes and wild dogs.

The new fact sheet on Neospora, a disease affecting cattle, that is spread by foxes and wild dogs was also available on the day and can now be accessed on the GLENRAC website under Publications or by collecting a copy at the office. *Thanks to the Glen Innes Showgrounds Trust for venue & catering.*

## Pasture Plant Identification Field Day for Young Farmers

GLENRAC recently held a successful Pasture species identification field day on the 12th of February at "Yirri North" as the first of our catch up days following the Pasture to Pocket grazing management course. Property host, Sam Baker welcomed us and gave a brief rundown on changes he has implemented since doing the course as well as ideas for future changes especially in stock and pasture management.

NSW DPI District Agronomist's, Clare Edwards and Jeff Lowien took us through an identification exercise using "Grasses of the Border Rivers-Gwydir Catchments Field Guide" before taking us into the paddock to use our new skills.

All participants felt they had increased their knowledge of both native and introduced pasture species and felt more confident to use that knowledge at home. Thanks to our property hosts the Baker's and our presenters Jeff & Clare. Our next workshop will be on managing stock and pasture during dry times. A tentative date of the 10th of April has been set. Contact Lucy at GLENRAC for more details if you are interested in attending.

## Combatting Coolatai Grass field day

GLENRAC will host a field day at Jim & Yvonne Benton's "Reedy Creek" Strathbogie Rd, Emmaville on the **28<sup>th</sup> March**. This is now the 3rd year of the Benton's project and the multi pronged management approach is achieving good levels of control against the Coolatai grass and promoting more desirable species.

Guest speakers for the field day will include Jim Benton, Jeff Lowien, NSW DPI, Jonathan Lawson, BRG CMA and three landholders from surrounding areas who are using similar management techniques. Those attending the field day will be able to inspect the demonstration areas and discuss management and control options with our guest speakers.

The field day will start at 9.00am and finishing at 12.30pm, Morning tea and lunch will be provided. **To RSVP contact GLENRAC 02 6732 3443 by the 22nd March 2013.** *This project is supported by the Border Rivers Gwydir Catchment Management Authority.*

# Tropical Soda Apple: Weed alert

Submitted by David Nixon, Glen Innes Severn Council Weeds Officer



Owners/occupiers purchasing cattle from the Grafton area are urged to be aware of the potential for Tropical Soda Apple to germinate and spread in the Glen Innes region.

## Infested Areas

There has been a recent infestation found growing at Inverell.

Tropical Soda Apple was first identified in Australia at Kempsey in the Macleay catchment intruding into the Armidale Dumaresq Council area. area on the Mid North Coast of New South Wales (NSW) in August 2010. However, this weed is believed to have been present in this area for a number of years.

Subsequent surveys have identified other smaller infestations in surrounding areas, including Grafton, Wingham, Belligen, Coffs Harbour, Bonalbo, Casino and Wauchope.

In 2011 infestations were discovered in the Namoi and Border Rivers catchments associated with the movement of cattle from infested coastal areas. Infestations were then traced to Inverell, Tamworth and Attunga where eradication control programs are in place.

## Means of Spread

Anecdotal evidence indicates that the fruit of Tropical Soda Apple is eaten by cattle, feral animals and birds resulting in distribution of seed over wide areas.

Seed can also be spread via water, contaminated produce, soil and equipment. Tropical Soda Apple invades pastures, open forest and other natural areas.

It forms dense stands that can be impenetrable to livestock, large wildlife and humans.

It is **strongly recommended** that stock from affected areas are held in a quarantine area for 48 hours before being transported to other properties or to sale. Prevent stock from grazing and moving through infested areas and check cattle handling facilities, cattle camps and yards for seedlings and new infestations.

## Identification

Tropical Soda Apple is a perennial shrub native to Brazil and Argentina. Plants grow to 1.8m in height and width, leaves are broad 15-20 cm long and 5.1-15.2 cm wide, hairy and resemble Fig leaves.

The entire plant is armed with 2 cm long straight prickles. Flowering occurs year round, flowers are white 5 petaled and develop in clusters below the leaves, fruit are 2.5cm in diameter (golf ball size) and resemble a watermelon but turn yellow at maturity.



The plant is a host for many diseases and pests of cultivated crops and it contains solasodine, which is poisonous to humans. To notify sightings of this plant or other invasive species, contact your local Weeds Officer.

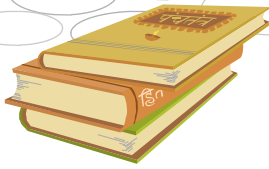
## Control

Council's Weeds Officer will assist with identification, control information, removal and eradication. Individual plants can be manually removed, but care must be taken to remove all the root material, as plants will regrow from root fragments. Fruit should be collected and disposed of appropriately (deep burial or burnt).

## Legislation

Tropical soda apple is declared a Class 2 or 3 noxious weed throughout NSW. Under the *NSW Noxious Weeds Act 1993*, the presence of a Class 2 weed must be notified to the Local Control Authority and the plant must be eradicated from the land and the land must be kept free of the plant. In areas where it is a class 3 weed, the plant including all fruiting material must be fully and continuously suppressed according to a management plan agreed by the Minister for Primary Industries.

**For more information on weeds identification and control methods contact David Nixon, Weeds Officer at Glen Innes Severn Council on 02 6730 2358.**



## Book Review

## 2013 Flagship Landcare Event in Bingara

**Mining Law in NSW : A guide for community (2013, NEW)** This free booklet is a guide to mining law in NSW aimed at communities affected by mining and coal seam gas (CSG) activities. It offers landholders a step by step legal guide to understanding your rights and obligations under the law and assists you to use the law to protect your interests and those of the environment.

To order a free copy from the Environmental Defenders Office (EDO) on 1800 626 239 or email [education@ednsw.org.au](mailto:education@ednsw.org.au)

**A Vegetation Management Project for Threatened Woodland Birds of the Northern Tablelands of NSW (2012, NEW)** This new booklet has been written by Ruth Tremont and presents results and findings from a 3-year grant from the NSW Environmental Trust to the Citizens Wildlife Corridors (CWC) Group in Armidale.

This booklet details the activities of 12 CWC landholder members on 16 sites in priority areas for woodland birds including protection of existing refuges of native vegetation and/or completed significant plantings to enhance or link refuge areas. Surveys of the bird communities of each of the 16 sites were made, to gather baseline data about the birds at every site.

In addition to the on-ground works and surveys, 'best practice messages' about managing native vegetation for threatened birds, biodiversity conservation and environmental health have been included in this booklet. GLENRAC has donated a copy of the booklet to the Glen Innes Severn library, electronic copies can be accessed online by doing a search for the book's title.



**Bee Friendly planting guide (2013, NEW)** This new book has been compiled by RIRDC to provide ideas and choices of plant species to encourage honeybees and Australian pollen- and nectar- using fauna, including mammals, insects and birds. Includes planting choices suitable for home gardens parks, paddocks and forests.

Download a free copy by going to the RIRDC website, [www.rirdc.infoservices.com.au/items/12-014](http://www.rirdc.infoservices.com.au/items/12-014) or you can order a hard copy for \$60 + P&H from RIRDC Phone 02 6271 4165.

Enjoy your Landcare and the chance to meet others who have a similar passion for natural resources? Interested in seeing Landcare sites, hearing from some of rural Australia's best speakers and touring the region's farms?

If so, the Landcare Adventure is for you. The Landcare Adventure is a 2-day event held each year across the North. **Costing just \$90 per person**, the event cost includes all meals, accommodation, event satchel, presentations and gala Adventure dinner. Bus travel from Glen Innes is also available at no extra cost to participants.

This year's event will be hosted by Upper Gwydir Landcare Association (Bingara) **19th & 20th March**, with key note presentations taking place in the magnificent, fully restored Roxy Theatre.

The impressive list of guest speakers include Graeme Sait (Nutritech Solutions), Ben Keogh (Manager, Australian Carbon Traders), Jock Laurie (NFF) and Dr Carole Hungerford. Graeme is an internationally renowned speaker on improving soil health and human health and is the author of Nutrition Rules. Ben has worked in carbon since 2004, with a particular focus on carbon farming and provides expert legal advice in all aspects of the carbon market.

Dr Carole Hungerford is a GP who divides her time between her medical practices in Sydney and farm near Bathurst. She is the author of the awarded book, *Good Health in the 21st Century* and is passionate about the link between soil health and human health. She is in demand as an educator and speaker.

Tours include diverse farms + Bingara's showpiece new project, The Living Classroom, an exciting and innovative project to build rural skills and trial emerging agricultural practices.

The Regional Landcare Awards will be presented at the Dinner on the Tuesday evening. Key note speaker at the Dinner will be Anne Williams, 2012 Farming Woman on the Year.

**For copies of the event flyer or to register for the event, contact GLENRAC or visit the GLENRAC website and go to Events. Registration closes 11<sup>th</sup> March 2013.**

**Sponsors include:** *Caring for our Country, Gwydir Shire Council, Namoi CMA, Border Rivers-Gwydir CMA, Northern Rivers CMA.*

# Benchmarking Pasture Performance

Contributed by Lewis Khan & Judi Earl of AIMS Ag



You have all probably heard of the importance of monitoring but unfortunately it's often all too hard to find the motivation. That's understandable, after all, the effort of monitoring comes well before the reward of benefiting from the data. As humans, we often prefer the reward to come before the effort; or at least as close in time as possible!

You might monitor all kinds of items such as house finances, mobile phone usage, fuel consumption of the car, water use, the number of times you washed-up and of course pasture production. The key to getting value from monitoring is when you see the results and can evaluate your performance: then you may feel like you are getting value. That is exactly what Judi Earl and Lewis Kahn (AIMS consulting) do with graziers in the northern tablelands and northern rivers with great support from the Northern rivers CMA.

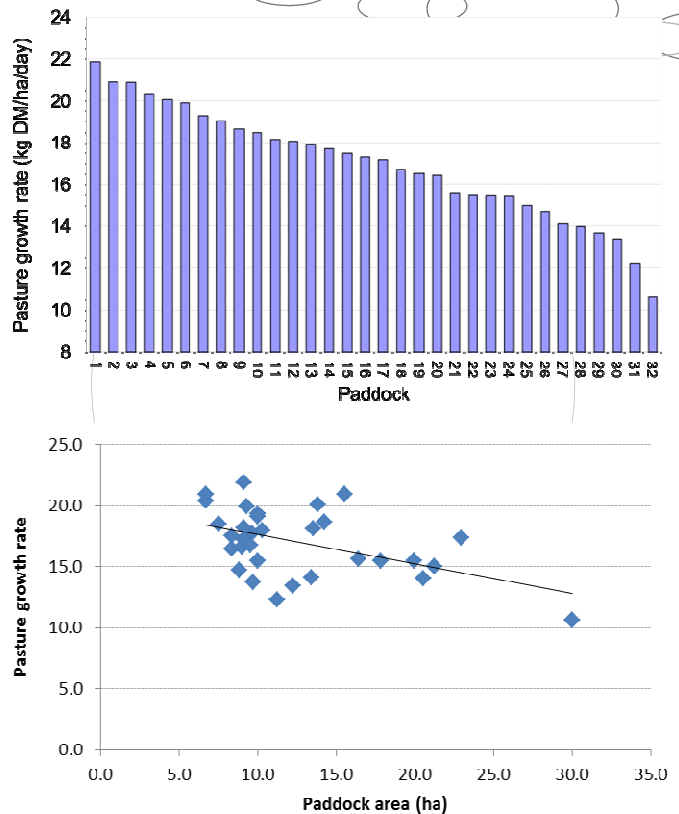
Monitoring pastures does not have to be a big job: there is an old saying that states "a short monitor is a good monitor". Monitoring starts with deciding just what you want to measure and how you will use the information.

To make it easier, AIMS have developed a 12 point pasture checklist (<http://aimsag.com.au/software.html>) that explains how to monitor pastures and what values to expect for production and diversity.

There are some calculations that are required –like for pasture growth rate– and the Pasture Checklist Calculator found at the same website makes this an easy task. This information can then be used to better plan grazing of paddocks (i.e. how long to graze and rest) using the Grazing Plan Calculator also found at the AIMS website.

To give you an idea of the value of pasture monitoring, real data for pasture growth rate is provided from a property with 32 paddocks. The range in average pasture growth rate is large, from 11 - 22 kg dry matter per hectare.

That difference amounts to 4 tonnes of extra pasture over the course of one year. This information allows us to ask why there is variation among the paddocks. One reason turns out to be the size of the paddock, with pasture growth rate highest for smaller paddocks.



This information allows calculation of the value of spending money on pastures, such as by making paddocks smaller or improving soil fertility. Do you know what value you get from pasture expenses? While we can't provide the reward before the effort, we have tried to make pasture monitoring as easy and useful as possible. Now over to you.

## Other Pasture Tools

**Pasture Picker Tool**—handy for helping select pasture species suitable for your local area. It is a comprehensive guide to pasture species to anyone interested in research and/or animal production. This tool can be accessed at [www.pasturepicker.com.au](http://www.pasturepicker.com.au)

**Pasture Cost Calculator**—Allows you to work out the costs and benefits of resowing pastures. Using Excel this calculator allows you to compare two different resowing options compared to your current practise. This tool is free to access and available from the Evergraze website, [www.evergraze.com.au](http://www.evergraze.com.au)



# Funding & Training Opportunities

## Community Landcare Grants Now Open

New grants were announced last month to support community groups and their work to keep Australia's productive land healthy, resilient and sustainable.

Community Landcare grants will provide grants of **\$5,000 to \$50,000** to community groups under the Caring for our Country Sustainable Agriculture stream. Successful grants must be completed by December 2014.

These grants will fund a range of activities, including but not limited to:

- Fencing riparian zones, wetlands and native vegetation to reduce to impacts of agriculture on the environment;
- Undertake weed and pest animal projects that address issues at a local scale that have been identified in national strategies or demonstrate and promote innovative methods of management;
- Develop leadership and capacity of community organisations,
- Hosting field days or conferences showcasing innovative sustainable agricultural practise
- Marketing or supply based initiatives that promote sustainable production and support of sustainable farm practise
- Demonstrating, trialling and adopting management practises that improve soil condition and reduce wind and water erosion.

If you have an idea for a grant application and would like help to develop and apply contact the GLENRAC office well in advance of the closing date.

**Applications close 20 March 2013.** Visit the website for more details [www.nrm.gov.au/funding/agriculture/clg/apply.htm](http://www.nrm.gov.au/funding/agriculture/clg/apply.htm) including guidelines and application forms.

## Community Environment Grants opening soon

Community Environment Grants are part of the Australian Government's Caring for our Country program. Small grants will be available to help community groups and organizations to undertake on-ground work and capacity building to contribute to the sustainable management of Australia's environment and natural resources through the Sustainable Environment stream of the second phase of Caring for our Country.

When these grants open GLENRAC will email to all our members and put it up on the GLENRAC website.

## 2013 Coles Junior Landcare School Garden Grants

Since 2008 Coles has been providing School Garden Grants of up to \$1,000 to schools and youth groups to help create gardens in their grounds or community, such as bush tucker gardens, water wise gardens or veggie gardens.

These programs encourage students to learn about the environment through "outdoor learning" and interaction in developing their own school gardens.

**Round 2:** closes 5pm (AEST) Friday 10 May 2013

**Round 3:** closes 5pm (AEST) Friday 2 August 2013

For more information visit:

[www.juniorlandcare.com.au](http://www.juniorlandcare.com.au)

## NSW DPI PROfarm courses now available online

NSW DPI is now offering a range of PROfarm courses online offering convenience and easy to access for those with a reliable internet connection.

Available on line courses include -

- Develop whole farm plan
- Develop & review a farm business plan
- Maintain far safety
- Manage soils
- Manage staff
- Managing climate risk
- Marketing agricultural products & services
- Prepare budgets and financial reports

For more information on courses go to the website [www.profarm.com.au](http://www.profarm.com.au) or phone one of the educational advisors on 1800 025 520.



## Looking for more grants?

The GLENRAC website is updated weekly with new funding opportunities' as they become available. To keep up to date visit the website and see what else is available from time to time, [www.glenrac.org.au](http://www.glenrac.org.au)



# GLENRAC OPERATING COMMITTEE 2012/2013

CHAIRMAN - John Bavea VICE CHAIRMAN— Jim Benton

TREASURER—Sam Baker SECRETARY - Dr Eric Sinclair

## LANDHOLDER & DEPARTMENT REPRESENTATIVES:

Greg Chappell, Tony Holliss, Winsome Quilty, Mark Pietsch, Sam Baker, Mike Norton, Norman Whitaker

**Glen Innes Severn Council** : Graham Price & Col Price

**Department of Primary Industries** : Jeff Lowien , **National Parks & Wildlife Office**: Peter Croft

**New England Livestock Health & Pest Authority**: Rob Munro,

**Glen Innes Local Aboriginal Lands Council**: Karen Potter

**Public Officer**: John Brien

For all questions relating to GLENRAC please contact our staff at -

68 Church Street (PO Box 660) GLEN INNES NSW 2370

Ph: (02) 6732 3443

Mobile 0427 325 901

email [glenrac@glenrac.org.au](mailto:glenrac@glenrac.org.au)

GLENRAC  
PO Box 660  
GLEN INNES  
NSW 2370



## To The Land Manager



Glen Innes Natural Resources Advisory Committee

## Coming Events:

- |               |  |
|---------------|--|
| 14 March      | Productive Farms & Healthy Rivers field day, Dundee 9:00am—12:30pm   |
| 19 & 20 March | New England North West Landcare Network, Landcare Adventure Bingara  |
| 19 & 20 March | Safe tractor operation, NSW DPI PROFARM 02 6763 1276   |
| 28 March      | Combating Coolatai Grass—Promote Production, Emmaville 9:00am -12:30pm   |
| 10 April      | Managing dry times for livestock, 1/2 day workshop Ph 02 6732 3443   |
| 2 May         | Ben Lomond Landcare—Soil Carbon workshop Guest Speaker Dr Christine Jones  |
| 25-27 October | Rural Women's Gathering in Scone, <a href="http://www.upperhuntertourism.com.au">www.upperhuntertourism.com.au</a> |



Catchment Management  
Authority  
Border Rivers—Gwydir



Catchment Management  
Authority  
Northern Rivers