

GLENRAC

Newsletter

July/August 2012

Where to find us - National Park & Wildlife Services Building, 68 Church St
Office Hours— Mon to Fri 9am to 5pm

Inside This Issue

- *New funding for GLENRAC*
- *Fireweed*
- *Project Snapshot*
- *Have Your Say*
- *Funding Opportunities*
- *Coming Events*



GLENRAC AGM
19th September 2012

Glen Innes Services Club 7:00pm
Join us to hear about GLENRAC's achievements over the past 12-months. Come along and meet the committee members & staff.
Guest speaker will be John Williams, Chairman of Northern Rivers CMA

Pest Animal Control & Landholder Engagement across the New England

The Pest Animal Management & Landholder Engagement in New England NSW project aims to reduce the threats to endangered ecological communities and threatened species in productive landscapes across the New England region of NSW. It aims to raise awareness about the impact of pest animals such as pigs, foxes, wild dogs and rabbits on our valuable natural assets as well as agricultural production.

It also aims to involve landholders in co-operative programs to control and manage these pests, as co-operative and integrated approaches have been recognised as the most effective methods for controlling pest animals.

The project will be delivering support and assistance for control programs as well as a number of field days and training workshops throughout the region over the next 12 months.

The project has numerous project partners including Landcare networks - GLENRAC, GWYMAC, Granite Borders Landcare, Southern New England Landcare and Upper Gwydir Landcare, New England LHPA, North West LHPA, NSW National Parks & Wildlife Service and Border Rivers-Gwydir Catchment Management Authority. The project is also supported by the Regional Landcare Facilitator - Tablelands & Slopes.

This project is being delivered by New England North West Landcare Network Chairs and is funded through the Australian Government's Caring for Our Country program.

PEST SMART has developed a range of fact sheets on pest animals and their management. You can download the PestSMART fact sheets visit <http://www.feral.org.au/pestsmart/> or call in to the GLENRAC office and collect a printed copy.

If you would like to know more about the project or are interested in starting or joining a pest animal control group in the New England Tablelands area contact the GLENRAC office on 02 6732 3443 or the New England LHPA on 02 6732 1200.



CARING FOR OUR COUNTRY



Glenrac News

Hello All,

Welcome to the Winter edition of the GLENRAC news. We have a host of information in this newsletter including a snapshot of various current GLENRAC projects for your interest. GLENRAC has been successful in obtaining funding for a number of projects in the last few years and critical to this process is feedback from landholders. So if you have an idea of what you think needs funding, at your place, in your local area or across the district be sure and let us know here at GLENRAC. This also helps to put together group applications that can benefit a group of people with a shared issue but not necessarily in the same neighbourhood.

Over the winter months we will not be running many events but we have a number of field days and workshops planned for the Spring and start of Summer so keep an eye out in the local newspaper and on the GLENRAC e/flash. Events will include the annual tree planting field day, RCS Healthy Soils workshop and more GPS workshops.

Several of our local Landcare groups have meetings happening in the next few weeks. If you would like to attend one of these meeting but don't know who to contact to find out more, please call the GLENRAC office and we can pass on the details (some details, apart from the date are not currently available). Whilst not all our Landcare groups are currently active if you would like some help to get your group up and going again GLENRAC staff would be happy to help.

GLENRAC updated our website earlier this year and this website is updated weekly with new information on events and funding. Have a look to find out more about GLENRAC and it's activities. Regards, Kylie Falconer



Bright Ideas

Feral Photos Wanted!

The 2012 Feral Photos competition is now open. It's a free photography competition open to all members of the public, proudly brought to you by the NRM Liaison & Engagement Project of the Invasive Animals CRC.

We are looking for the best original photographs of pest animals, pest animal damage, and pest animal control or monitoring activities in Australia. Colour, black and white, sepia-tone, remote camera and panoramic photos will all be accepted. There will be some great prizes and the winning entries will be featured in our next Feral Photos calendar! So if you need some inspiration, head to <http://www.invasiveanimals.com/feral-photos/2011-winners/> or <http://www.feral.org.au/feral-photos-2011/> to see some of the entries from last year's highly successful competition.

All entries (a maximum of 3 per person) must be provided in electronic or printed form, together with a completed entry form available at: www.invasiveanimals.com/feral-photos. Please ensure you read and understand the terms and conditions contained in the entry pack. Send your entries via email to: annette.brown@dpi.nsw.gov.au or by mail to: Feral Photos 2012 - Invasive Animals CRC, Annette Brown, Locked Bag 6006, Orange NSW Australia 2800.

If you have any questions, please contact annette.brown@dpi.nsw.gov.au or jessica.marsh@dpi.nsw.gov.au. Competition closes 30th September, 2012.

waste > art & design competition

Don't Forget! –The Regional Exhibition will be hosted by Glen Innes Severn Council at the Glen Innes Art Gallery from 28 July to 11 August 2012.

New Funding for GLENRAC!



GLENRAC has recently secured funding through the Australian Government's Biodiversity Fund for the control of honey locust on the Mann & Severn Rivers. GLENRAC will receive \$109,300 over three years and will target 110km of river frontage on private and public lands.

Honey locust (*Gleditsia tricanthos*) is a highly invasive tree capable of smothering native vegetation and severely altering the habitat of threatened species. The honey locust plants form impenetrable thickets and the trunks are protected by large thorns. Honey locust has been identified as an emerging weed threat along both rivers and the adjoining conservation areas of National Parks.

This project will build on control works already completed by landholders, with funding previously distributed to landholders along the Mann River from the Northern Rivers CMA. The project will offer landholders to participate to a collaborative and coordinated weed control program to prevent the further spread to downstream catchments.

The project area will encompass the Mann River from the headwaters to the junction of the Henry Rivers and the Severn River, from the headwater to the junction of the McIntyre River. If you are a landholder on the Mann River or Severn River's and would like to know more about this project please contact GLENRAC on 02 6732 3443.



Above - Typical honey locust spines (NPWS)

GLENRAC Project Snapshot

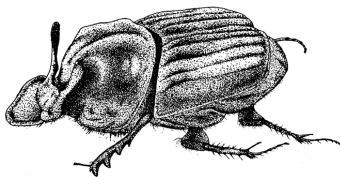
Dung Beetle Project Update

Livestock producers around Glen Innes district have volunteered to be part of a Dung Beetle Friendly Farms project. The project will look at the positive benefits of a very efficient recycler and determine the range of species in the Glen Innes district over the period of 12-months.

The six farms from across the district are monitoring their dung beetle populations by monthly trapping activities. Beetles are collected and handed in to be identified and results collated. Landholders involved attended a dung beetle monitoring/trapping training afternoon in May. Any gaps in beetle species populations will be identified and options to fill these gaps researched. This project will then fund the purchase of complementary dung beetle species for these properties.

This project has also funded the purchase of a new book titled **“Ecology and Evolution of Dung Beetles”** valued at \$130 which has been donated to the Glen Innes Severn library where it can be borrowed by anyone interested in dung beetles. This book is a newly released and is a comprehensive resource about dung beetles.

If you are interested in learning more about dung beetles a range of printed information is available at the GLENRAC office. Call in & take a look.



GLENRAC Mapping Update

GLENRAC have been successful in obtaining an ESRI Conservation Program Grant which supplied us with ArcGIS10 GIS mapping software. The grant also supplied us with ArcPad field data capture software. This will allow us to capture, edit, and display geographic information quickly and efficiently in the field. Using ArcPad means that data we capture can be checked in and out of GLENRAC's geo-database. The geo-database is the central data repository for spatial data storage and management.

On the 4th May, eleven people attended a GPS field day at the Glen Innes Agricultural & Research Station. This day gave GLENRAC ideas and feedback on how we might run our own GPS training. GLENRAC have purchased a number of Garmin 62 GPS units. These units will allow us to work with landholders in data capture for a myriad of natural resource projects such as soil erosion sites and revegetation plantings. If you are interested in attending a future GPS training event please contact Tanya at Glenrac on 02 6732 3443 or tanya@glenrac.org.au

Border Rivers Gwydir CMA Sustainable Farming Grants

GLENRAC was successful in securing two of the BRG-CMA grants earlier this year to provide local educational events for local landholders. The first grant was to run a Landscan course. This course is delivered by NSW DPI staff and will run over 4 to 6 months with 5 half day sessions and one full day session. The course will help participants to understand soil test results; assess paddock potential, match livestock requirements with landscape variability; prioritise inputs and management for production and sustainability.

Nine local landholders have taken the opportunity to attend this fully funded course. The course usually costs \$440 per person and has been fully funded by this grants from BRG-CMA. Day 3 will be held on the 27th July 2012.



Above—Landscan participants hear from Jeff Lowien on soil sampling techniques on another cold winter's day!

The second grant will fund another Resource Consulting Services delivered **“Healthy Soils”** workshop later this year. GLENRAC hosted the same workshop earlier this year as part of the Severn River project. We have received positive feedback on the one day workshop and look forward to being able to deliver the workshop locally for a minimal fee.

If you have previously attended a RCS training course this would be an excellent refresher day. At this stage a date has not been set, but we expect to have it in the next newsletter. If you would like to attend this workshop please let Lucy know on 02 6732 3443 or by emailing office@glenrac.org.au

In addition to the two GLENRAC grants, six landholders in the BRG-CMA were also successful in obtaining funding towards a range of projects including revegetation, fencing to land capability, fencing to protect riparian areas, use of soil ameliorants, pasture renovation and soil erosion works.



Keep your eye out for similar funding opportunities in the future.

Have you seen this weed? Fireweed

Submitted by David Nixon, Glen Innes Shire Council Weeds Officer



Fireweed (*Senecio madagascariensis*) is a highly invasive and opportunistic weed native to south-eastern Africa. It quickly colonises overgrazed pastures and disturbed areas. Fireweed is a serious pasture weed of coastal New South Wales (NSW). It is a weed to be aware of, as it could adapt and establish on the Tablelands area.

Identification

Fireweed is a daisy-like plant that grows from 10 to 60 cm high. It has a variable growth habit and leaf structure, but the most common form of fireweed is a low, heavily branched, annual or short lived perennial plant. Leaves are generally bright green in colour, fleshy and narrow, leaves are 2-7 cm long, alternately arranged on the stem, and have serrated, entire or lobed margins. Broader leaves usually clasp around the stem. Flowers are small, yellow and daisy-like, flowers are 1-2 cm in diameter and arranged in clusters at the end of each branch. They can number from 0 to 200 per plant, and each flower will commonly have 13 petals and 21 bracts forming the 'cup' under the flower.

Distribution and habitat

Fireweed is largely restricted to the south-eastern coast of Australia and has established along the entire NSW coast. First recorded in the Hunter Valley in 1918, it has spread south into Victoria and occurs as far north as central Queensland. It also occurs on the northern and southern tablelands of NSW and as isolated infestations in parts of inland NSW.

Fireweed does not grow well in shaded areas, preferring open country and areas of bare soil. It will quickly invade roadsides, pastures and open forests, and heavy infestations are common on cultivated or disturbed land.

Lifecycle

Under favourable seasonal conditions, the plant may behave as a short-lived perennial, with some plants surviving for 3 years. However, the majority of plants only live for one season. Plants grow quickly and can produce flowers 6-10 weeks after emergence, with flowering occurring mainly in spring.

Fireweed seeds profusely, with each flower producing between 50 and 120 seeds of high viability. One plant is capable of producing 5 000 to 30 000 seeds in one season depending on conditions. Most seed germinates quickly, but about 15% of seed has a high level of dormancy.

Spread—The light fluffy seeds of fireweed are easily spread by wind. This is the main method of local spread. Most seed will fall within 5 metres of the parent plant but some seed can be spread to greater distances in updrafts and whirlwinds. Dispersal beyond 1 kilometre is more likely to be caused by unintentional spread by human activity. Various means of spread include: livestock; clothing, vehicles and machinery; and contaminated hay, silage and grain products; as well as spread by wild and feral animals.

Livestock poisoning

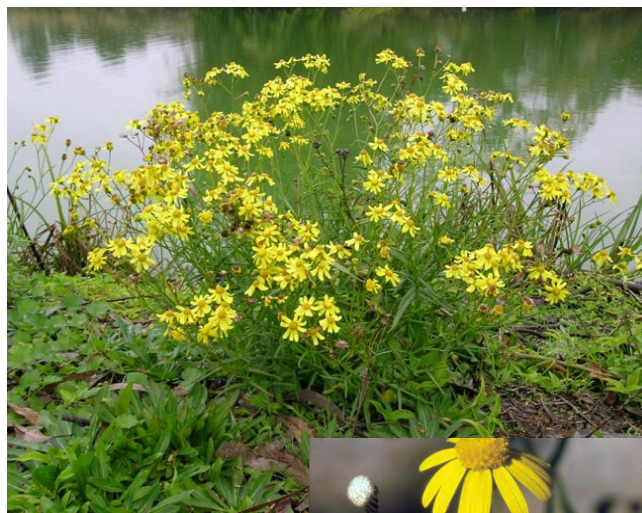
Fireweed contains pyrrolizidine alkaloids that are toxic to livestock and cause liver damage. Young or hungry stock or new stock not previously exposed to fireweed are the most at risk of poisoning.

All parts of the plant at all stages of growth are toxic. Hay, silage or grain that is contaminated with fireweed plants or their seeds can also be toxic.

Symptoms of pyrrolizidine alkaloid poisoning include: loss of condition; poor growth rates; weakness; abdominal straining; and chronic scouring. Sudden deaths can occur in fat animals that are no longer grazing fireweed-infested pasture but have grazed them in the previous 3 to 6 months.

Prevention and early detection

Early detection is vital to prevent fireweed from becoming established. Once fireweed is detected, it is important to act immediately to prevent the problem from becoming worse. A dense pasture cover will help to prevent fireweed from invading.



Above & Right—The fireweed plant and flower heads
Photos—Courtesy of NSW DPI

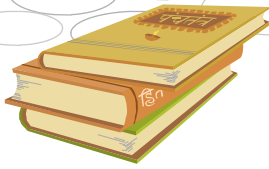


We will cover management & control of fireweed in the next GLENRAC newsletter.

If you would like more information on fireweed go to the NSW DPI website, www.dpi.nsw.gov.au and "Search" for fireweed. Another free web resource is the 2011 produced 40 page **Fireweed Management Guide** available to view and download at www.ruralfutures.une.edu.au

For more information on weeds identification and control methods contact David Nixon, Weeds Officer at Glen Innes Severn Council on 02 6730 2358.





CD & DVD Review

Ben Lomond Compost Field Day

Birds of Grafton DVD Pam Kenway from Grafton has put together a DVD of photos of 111 bird species found in or around Grafton. They are all names and the slideshow is set to music. The cost of the DVD is \$13 (inc. P&H). Purchase of this DVD raises funds to directly assist with Common Myna trapping program in the Clarence Valley. Contact pam@cvcia.org.au to order a copy.

Internal Parasites in prime lambs interactive CD (2007) - Produced by MLA, this CD provides a comprehensive database of literature relevant to internal parasitism in prime lamb production in southern Australia. A complete reference library for producers. Free from MLA.

The Frog Croaker App. Frog Croaker is a free iPhone download application which uses the latest geo-location technology to showcase frog species found in the Namoi Catchment (North West NSW). Frog Croaker catalogues all 27 species of frogs in the Namoi Catchment. Frogs often respond to the call of their own species. By clicking on the call button, the unique frog call is sounded to the frog and if it replies it helps identify which species of frog you have found. To download a copy go to www.namoi.cma.nsw.gov.au

Mulching Woody Weeds

These pictures were in a recent GWYMAC Landcare newsletter and I thought that it may be of interest for some readers. We've all seen an increasing interest in mulchers as a means of pasture management but this is a heavy duty version for wood weed control.

Owned by Mick & Kim Mather from Nullamanna this flail mulcher is used for the control of woody weeds such as sweet briar, privet, cypress pine and blackberry. Operated on the standing backhoe mounted mulcher is able to manoeuvre to hard to reach places and can tackle difficult terrain. *Thanks to GWYMAC Landcare for the use this information & photo.*



More than 50 people from as far away as Tamworth and Stanthorpe were treated to an informative presentation by Luke Bowman from "Break it Down Composting" Manilla, at the Ben Lomond Memorial Hall on Thursday 21st June. He walked us through his introduction to composting using the CMC method (Controlled Microbial Composting) developed by the Luebke family in Austria.

Luke spoke of the importance of humus and micro life in soils creating increased soil health and contributing to healthy land and production. Other topics included humus compost production, building compost windrows, compost turners and other machinery, compost tea and extract production and hand composting for gardeners. Luke's knowledge and experience enabled him to give tips on what not to do, and important factors such as good site preparation and compost testing.

There were lots of questions from people on various aspects of the presentation. Luke also gave out a few compost recipes to trial at home and on farm, and demonstrated a small compost tea maker. Feedback received by GLENRAC has been very positive - "thank you for a fantastic field day" "It was very useful with knowledgeable people sharing their experiences".

Pinkett Whiskey Grass Project

The Pinkett Sports & Recreation Association were successful in securing a \$20,000 grant in the 2010/11 round of Community Action Grants to investigate management and control strategies for emerging pasture weeds, whiskey grass and Coolatai grass. Initial control works have been undertaken using a carpet roller to control whiskey, Coolatai and African Love grass in three separate demonstration sites.

Exceptionally wet conditions over the Spring and Summer months of 2011/12 made control activities difficult to get done but eventually the sun did shine and the work was completed. A display of the results achieved to date is now able to be viewed at the GLENRAC office. Additional control work will be undertaken this Spring to add to these initial results.

The Community Action Grants program is a great funding opportunity to work with like minded people to find local solutions for shared problems such as weeds.

Have you say on the future of NRM in our area

Native Vegetation Management in NSW

Landholders with an interest in Native Vegetation management are invited to attend Native Vegetation Regulation Review Regional Information Sessions to be held in Grafton, Inverell and Tenterfield in July:

General Regulation Information Sessions	Private Native Forestry Information Sessions
South Grafton Tuesday 3/7/12 10:00am South Grafton Ex-Services Club	South Grafton Tuesday 3/7/12 1:30pm South Grafton Ex-Services Club
Tenterfield Monday 16/7/12 10:00am Tenterfield Golf Club	Tenterfield Monday 4/7/12 1:30pm Tenterfield School of Arts
Inverell Thursday 12/07/12 3:00pm Inverell RSM	

These information sessions will explain the proposed changes to the Native Vegetation Regulation 2005 (which underpins the *Native Vegetation Act, 2003*), the associated methodology used by Catchment Management Authorities to assess clearing proposals, and the Private Native Forestry Code of Practice.

The NSW Government's review of the Native Vegetation Regulation 2005 aims to simplify current regulations, reduce red-tape, and improve service delivery by Government authorities.

The period of public consultation for the draft of the proposed Native Vegetation Regulation is now open and comments can be submitted up until midnight of Friday the 24th of August 2012.

Find out more about how you can have your say about Native Vegetation Management, and view the draft Regulation prior to the information sessions, online at: www.environment.nsw.gov.au/vegetation/consultreview.htm
Please RSVP for catering to Alice Devlin at the BRG-CMA on 6757 2562 or email: alice.devlin@cma.nsw.gov.au

Catchment Action Plan Reviews

GLENRAC hosted a CAP 2 information session on Monday 18th June in Glen Innes for interested landholders to attend. At this meeting the Northern Rivers CMA presented their new Discussion Paper 3 and opened the new community feedback survey for public comment. The new discussion paper is on "New Directions for CAP 2". In the paper, find out how your sub catchment rates for community capacity and landscape health. The deadline for submission of comments/surveys/letters is the 20th of July 2012.

The CMA's are interested in what you think, in particular about;

1. How the proposed new directions for CAP 2 affect you, and
2. What do you think are the major issues affecting community capacity and natural resource health in your area?

How can I provide my feedback to the CMA? Contact GLENRAC and we can provide you with a hard copy of the Discussion Paper and the Community Feedback Survey. You can also access these documents on-line at www.northern.cma.nsw.gov.au

NRCMA Submission Writing Workshop

GLENRAC will host a submission writing workshop to assist landholders in the development of submissions to Northern Rivers CMA regarding their draft discussion paper. Submissions are a way for the community to provide feedback to the Northern Rivers CMA on the contents of the discussion paper and the direction Northern Rivers CMA is taking in terms of managing natural resources. More workshops will be held around the Glen Innes district upon request from landholders.

When: Wednesday 11th July 2012

Where: Glenrac Office, 68 Church St

Time: 10:00 am to 2:00pm

RSVP: No need to RSVP, tea & coffee will be available



New opportunities for recognition & funding

Hidden Treasures' recognising women volunteers in rural NSW

Hidden Treasures acknowledges the important volunteer roles women play within NSW rural communities. Nominating a rural woman for the **2012 Hidden Treasures Honour Roll** is a great way to celebrate rural women from across New South Wales who give so much of their time to improving our communities and neighbourhoods.

We invite you to nominate a friend, family member, colleague, community worker - any rural woman who you believe makes your community a better place to live.

To nominate a Hidden Treasures volunteer simply complete the Nomination Form and tell us a short 'story' about why your nominee is worthy. All rural women nominated will be included in the 2012 Honour Roll.

For more information or if you need assistance with your nomination call the NSW Centre for Volunteering on 02 9261 3600 or email: rural.women@dpi.nsw.gov.au **Nominations close 20 August 2012.**

Turf Australia Junior Landcare Perfect Patch of Green Grant

Landcare Australia has teamed up with Turf Australia to help refresh, rebuild, or revive 15 school grounds across Australia with natural grass through a new program -Turf Australia Junior Landcare Perfect Patch of Green.

Turf Australia is giving schools and youth groups the opportunity to win a free green makeover. Schools and youth groups across Australia have the chance to have their sports field or recreational area revitalized with new turf. Schools, students and teachers are invited to enter by telling us how natural turf will enhance your environment and how your school ground, recreational area and/or sports field will benefit from a real green makeover.

For further information visit www.juniorlandcare.com.au **Applications close: Tuesday 31st July, 2012 (5.00pm EST).**

Coles Junior Landcare Grants

101 schools around Australia will receive grants of up to \$1,000 from Round 3 to assist with the development of various garden projects, not only educating children about fresh fruit and vegetables, but also the importance of looking after the environment.

Schools, day care centers and youth groups can apply. Visit www.juniorlandcare.com.au or www.coles.com.au to apply. **Applications close 27th July 2012.**

Volunteer Grants 2012

Volunteer Grants 2012 recognises the valuable work of Australia's volunteers. This initiative forms part of the Australian Government's ongoing commitment to organisations whose volunteers assist disadvantaged communities and encourage inclusion of vulnerable people in community life.

Funding of \$16 million is available to support and encourage volunteering. Eligible not-for-profit community organisations can apply for grants between **\$1,000 and \$5,000** to:

- ⇒ Purchase portable, tangible, small equipment items to help their volunteers
- ⇒ Contribute to the reimbursement of fuel costs for their volunteers who use their own car to transport others to activities, to deliver food, assist with medical appointments or help people in need
- ⇒ Contribute to the reimbursement of transport costs incurred by volunteers with disability, who are unable to drive
- ⇒ Contribute to the costs of training courses and/or undertake background screening checks for their volunteers.

Funding is limited and applications will be assessed and prioritised according to how strongly they meet the selection criteria. The selection criteria, eligibility requirements and other essential information can be found at: www.fahcsia.gov.au **Applications close: Wednesday 25 July 2012 at 5pm AEST.**

2012 RIRDC Rural Women's Award

This Award provides a \$10,000 bursary for the NSW/ACT winner and the opportunity for the winner and runner up to participate in further leadership and development activities.

The Award is open to women involved in primary industries or natural resource management, whether you work on broad acre farming, intensive livestock, fish, forestry or related service industries.

For more information see www.dpi.nsw.gov.au/rwn **Applications open 1 August and close 15 October 2012.**

1080 / Pindone Training Available

NE LHPA provides training for landholders in the use of 1080 & Pindone only. This qualification is valid for 5 years. The course costs \$44 per person and runs for around three hours. If you would like to complete this training course contact the **New England LHPA** on 02 6732 1200.

GLENRAC OPERATING COMMITTEE 2011 /2012

CHAIRMAN - Jim Benton

TREASURER / SECRETARY - Dr Eric Sinclair

LANDHOLDER & DEPARTMENT REPRESENTATIVES:

Greg Chappell, Tony Hollis, Winsome Quilty, Mark Pietsch, Sam Baker, John Bavea, Mike Norton
Glen Innes Severn Council : Graham Price & Dan Raymond
Department of Primary Industries : Jeff Lowien , National Parks & Wildlife Office: Peter Croft
New England Livestock Health & Pest Authority: Rob Munro,
Glen Innes Local Aboriginal Lands Council: Karen Potter
Public Officer: John Brien

For all questions relating to funding and funding applications, contact
GLENRAC OFFICE 68 Church Street (PO Box 660) GLEN INNES NSW 2370
Ph: (02) 6732 3443 Fax: (02) 6732 6628 Mobile 0427 325 901
email: glenrac@glenrac.org.au website: www.glenrac.org.au

GLENRAC
PO Box 660
GLEN INNES
NSW 2370



To the LAND Owner



Coming Events:

- | | |
|----------|---|
| 9 July | Glen East Landcare Meeting, Glen Innes Services Club 6:30pm |
| 14 July | Yarraford Landcare Meeting |
| 20 July | GLENRAC Committee Meeting 9:00am |
| 27 July | Landscan Day 3, 9:30am–3:00pm |
| 3-5 Sept | National Landcare Conference Sydney |
| 19 Sept | GLENRAC Annual General Meeting, Glen Innes Services Club 7:00pm |
| 24 Sept | Introduction to writing winning grants workshop, Inverell, www.ourcommunity.com.au |
| 11 Oct | GLENRAC Tree Planting field day 9:30am–12:00am |
| 20 Oct | Rummerys Hill Landcare meeting |

