



Local Land
Services
Northern Tablelands

Foot and Mouth Disease

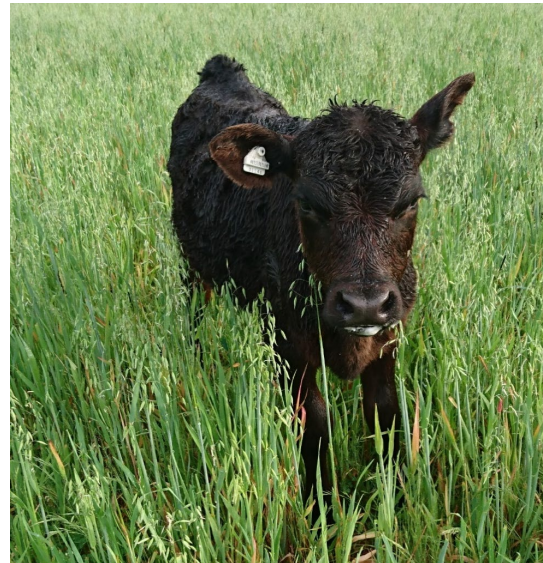
Kate Burren & Meg Parsons

District Veterinarians

Glen Innes Local Land Service

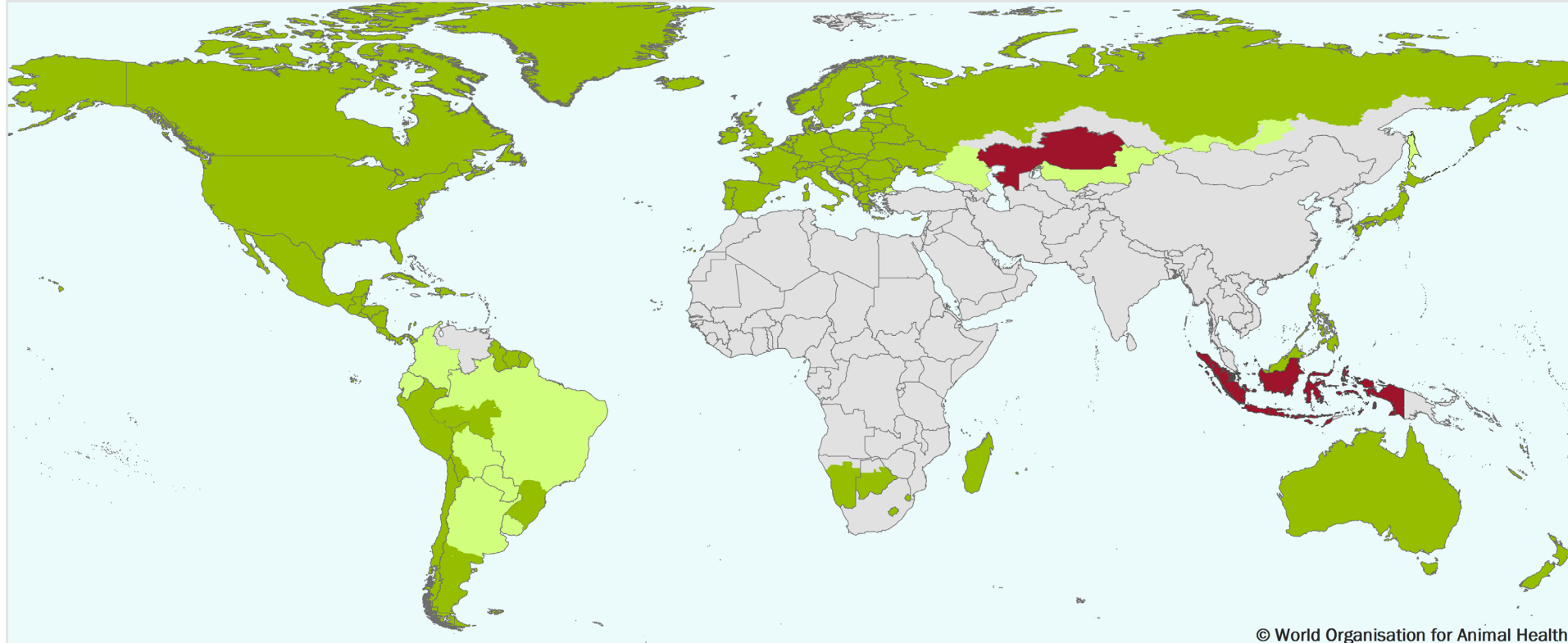
What is Foot and Mouth Disease (FMD)?


- Highly contagious virus
- 7 different serotypes (A, O, C, SAT1, SAT2, SAT3, Asia1)
- Affects cloven-hooved animals such as cattle, pigs, deer, camelids, bison, buffalo

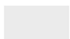



WOAH Members' official FMD status map


Last update June 2022



 Members and zones recognised as free from FMD without vaccination

 Countries and zones without an official status for FMD

 Members and zones recognised as free from FMD with vaccination

 Suspension of FMD free status

- Considered endemic throughout the Middle East, parts of Africa, Asia & South America
- In May 2022 was reported in Indonesia and July in Bali
 - Last seen in Australia in 1872

Why is FMD so important?

Will cause:

- serious production losses & disruption to regional & international trade
- Disruption to production, unemployment, decreased tourism, mental health problems, environmental concerns, welfare concerns

Presence of susceptible feral animals will likely make eradication more difficult



How does FMD spread?

- Aerosol (respiratory secretions, ruptured blisters, etc)
 - Cuts/abrasions (on feet, mouth, nose, udder, skin)
 - Direct contact (including with carcasses & untreated hides)
 - Movement of animals
 - Contaminated fomites (eg: equipment, vehicles, clothing/shoes, feed, people)
 - Ingestion of contaminated feedstuffs (eg: swill feeding pigs)
 - Breeding, including AI
 - Wind
- Incubation period thought to be 14days, however can be as little as 2-3days
- Can be excreted up to 4days before the development of signs



Clinical Signs

- Can appear dull/depressed, decreased appetite, pyrexia, decreased milk production, weight loss, mastitis, abortions
- Disease can be mild, especially in sheep and goats



Clinical Signs Continued...

- Vesicles
 - Blanched area, becomes fluid-filled blister, bursts, leaving an ulcer within about 2 days (may only see ulcers)
 - Often about 30mm though can coalesce
 - Often seen in the mouth (gums, tongue, lips, etc), nose, teats, around hooves
- Salivation/drooling
- Lameness, possibly recumbent (heel separation can cause lameness for months)





Unruptured vesicle – day 2



Same foot – 1 day later



Goat with blister in mouth. Image: FAO-EUFMD



Cow with blisters on hoof. Image: Mark Stevenson



Pig with blisters on snout. Image: FAO-EUFMD

Who to contact if you suspect?



- Spot anything unusual – contact your local District Vet
- **Emergency Animal Disease Watch Hotline (24hours) on 1800 675 888**
- Contact your Private Vet
- Assume it could be FMD until proven otherwise



What happens if Australia gets FMD?

- Earlier detection = more likely a rapid response could stop the spread
- Note: since the detection of FMD in Bali, Australia's risk has increased from about 9% to 11% - a huge concern, however, stopping international travel to Bali or footbaths at the airports isn't the be-all & end-all the media might have you think
- Responses will include stock standstills, quarantine, decontamination, slaughter & disposal of infected carcasses or other contaminated materials & vaccinations - there are already response plans in place which are being updated with federal and state considerations, ready for a potential outbreak
- Everyone's cooperation & support will be essential in trying to detect & eradicate FMD if it is to get into Australia



What can you do?



- **Strong biosecurity plan on your property**
- Record who is coming onto your property – FMD can stay in nasal passages, throat, etc for approx. 28hours – ask the question of when & where people have travelled recently, have they been overseas?
- Any outside vehicles come to the house/shed & do not travel over the farm (take them in your vehicle)
- All stock movements entered on the NLIS database
- Do not swill feed pigs (eg meat/meat products, dairy products, etc)
- Monitor animals regularly and ensure any suspect animals are isolated - call your vet ASAP
- PPE such as gloves, overalls, rubber boots & a mask, & thoroughly disinfecting of clothing, equipment
- If travelling overseas, ensure that you declare any required items & visits to any farms
- Consider feed and fodder availability in case of a stock standstill (good for drought planning also)

