

Managing Native Vegetation on a Rural Property

Local Land Services Act 2013

Jess ten Brink
Senior Land Services Officer

15th Feb 2023

Approval Pathways



- Environmental Planning and Assessment Act 1979
- Biodiversity Conservation Act 2016
- Local Land Services Act 2013
 - RU1, RU2, RU3, RU4 & RU6 is considered “rural”
 - Local Environment Plan may require Council approval

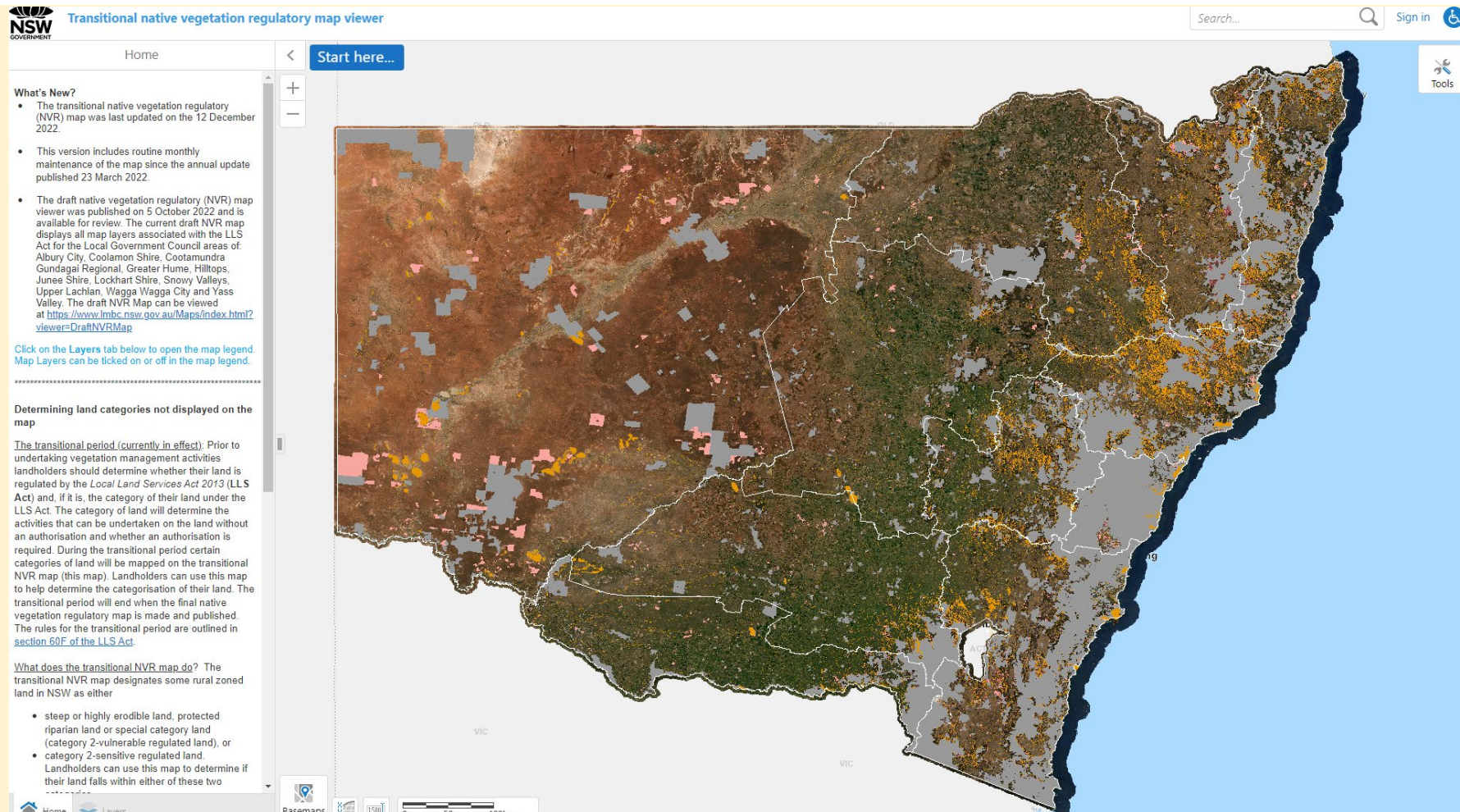
Landholder Enquiries



1. Allowable Activities
2. Options that may be available under the Land Management (Native Vegetation) Code 2018

The first check for landholders is to view their landholding on the Native Vegetation Regulatory Map

Transitional Native Vegetation Regulatory Map



Transitional native vegetation regulatory map viewer

Home

Start here...

What's New?

- The transitional native vegetation regulatory (NVR) map was last updated on the 12 December 2022.
- This version includes routine monthly maintenance of the map since the annual update published 23 March 2022.
- The draft native vegetation regulatory (NVR) map viewer was published on 5 October 2022 and is available for review. The current draft NVR map displays all map layers associated with the LLS Act for the Local Government Council areas of: Albury City, Coolamon Shire, Cootamundra Gundagai Regional, Greater Hume, Hilltops, Junee Shire, Lockhart Shire, Snowy Valleys, Upper Lachlan, Wagga Wagga City and Yass Valley. The draft NVR Map can be viewed at <https://www.lmbc.nsw.gov.au/Maps/index.html?viewer=DraftNVRMap>

Click on the Layers tab below to open the map legend. Map Layers can be ticked on or off in the map legend.

Determining land categories not displayed on the map

The transitional period (currently in effect): Prior to undertaking vegetation management activities landholders should determine whether their land is regulated by the *Local Land Services Act 2013* (LLS Act) and, if it is, the category of their land under the LLS Act. The category of land will determine the activities that can be undertaken on the land without an authorisation and whether an authorisation is required. During the transitional period certain categories of land will be mapped on the transitional NVR map (this map). Landholders can use this map to help determine the categorisation of their land. The transitional period will end when the final native vegetation regulatory map is made and published. The rules for the transitional period are outlined in [section 60F of the LLS Act](#).

What does the transitional NVR map do? The transitional NVR map designates some rural zoned land in NSW as either

- steep or highly erodible land, protected riparian land or special category land (category 2-vulnerable regulated land), or
- category 2-sensitive regulated land.

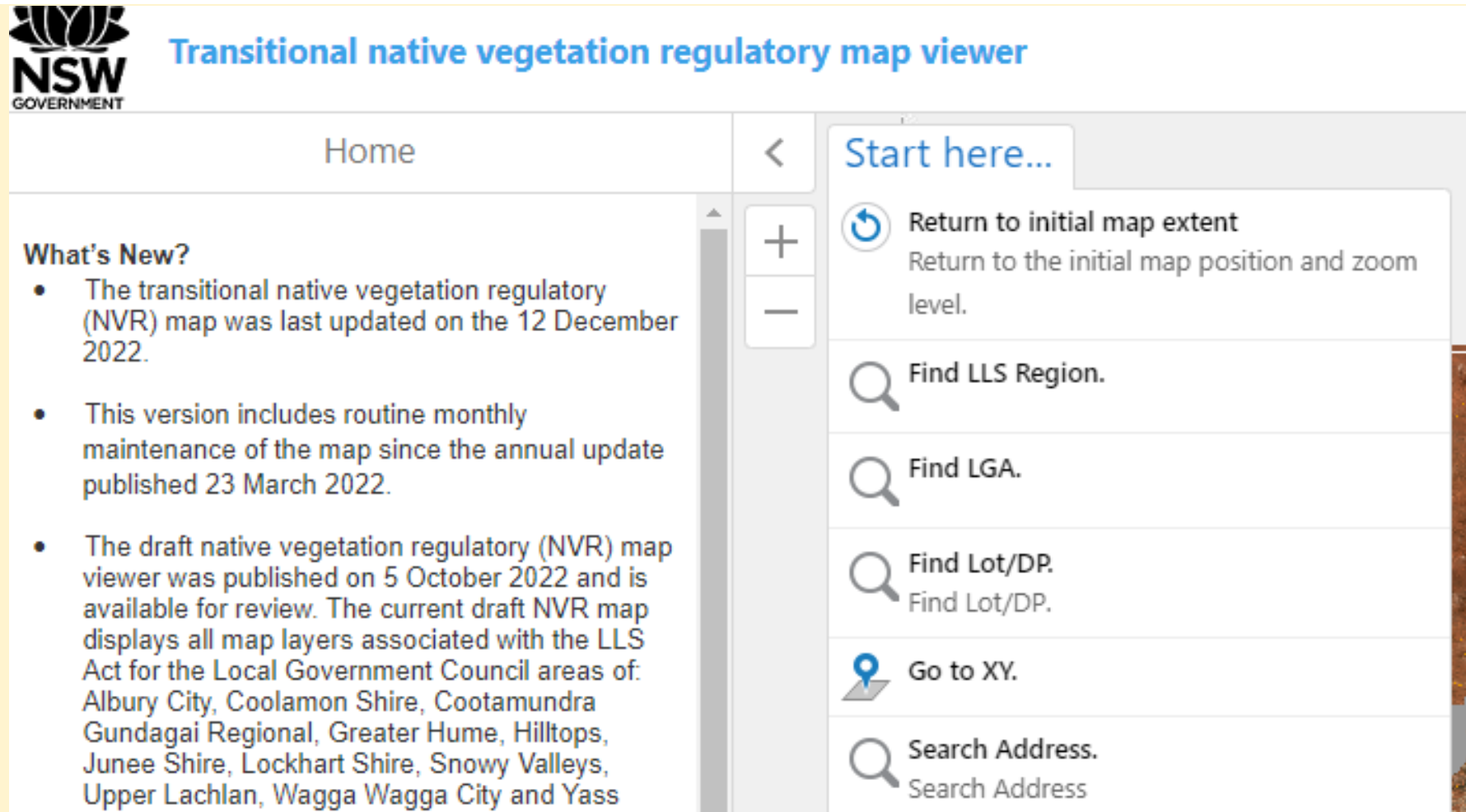
Landholders can use this map to determine if their land falls within either of these two

Home Layers

Basemaps

1500m

0 500 1000m



The screenshot shows the user interface of the 'Transitional native vegetation regulatory map viewer'. At the top left is the NSW Government logo. The main title is 'Transitional native vegetation regulatory map viewer'. Below the title is a navigation bar with a 'Home' button and a back arrow. To the right of the navigation bar is a 'Start here...' menu with several options: 'Return to initial map extent', 'Find LLS Region.', 'Find LGA.', 'Find Lot/DP.', 'Go to XY.', and 'Search Address.'. Below the navigation bar is a 'What's New?' section with a list of updates.

Transitional native vegetation regulatory map viewer

Home

Start here...

- Return to initial map extent
Return to the initial map position and zoom level.
- Find LLS Region.
- Find LGA.
- Find Lot/DP.
Find Lot/DP.
- Go to XY.
- Search Address.
Search Address

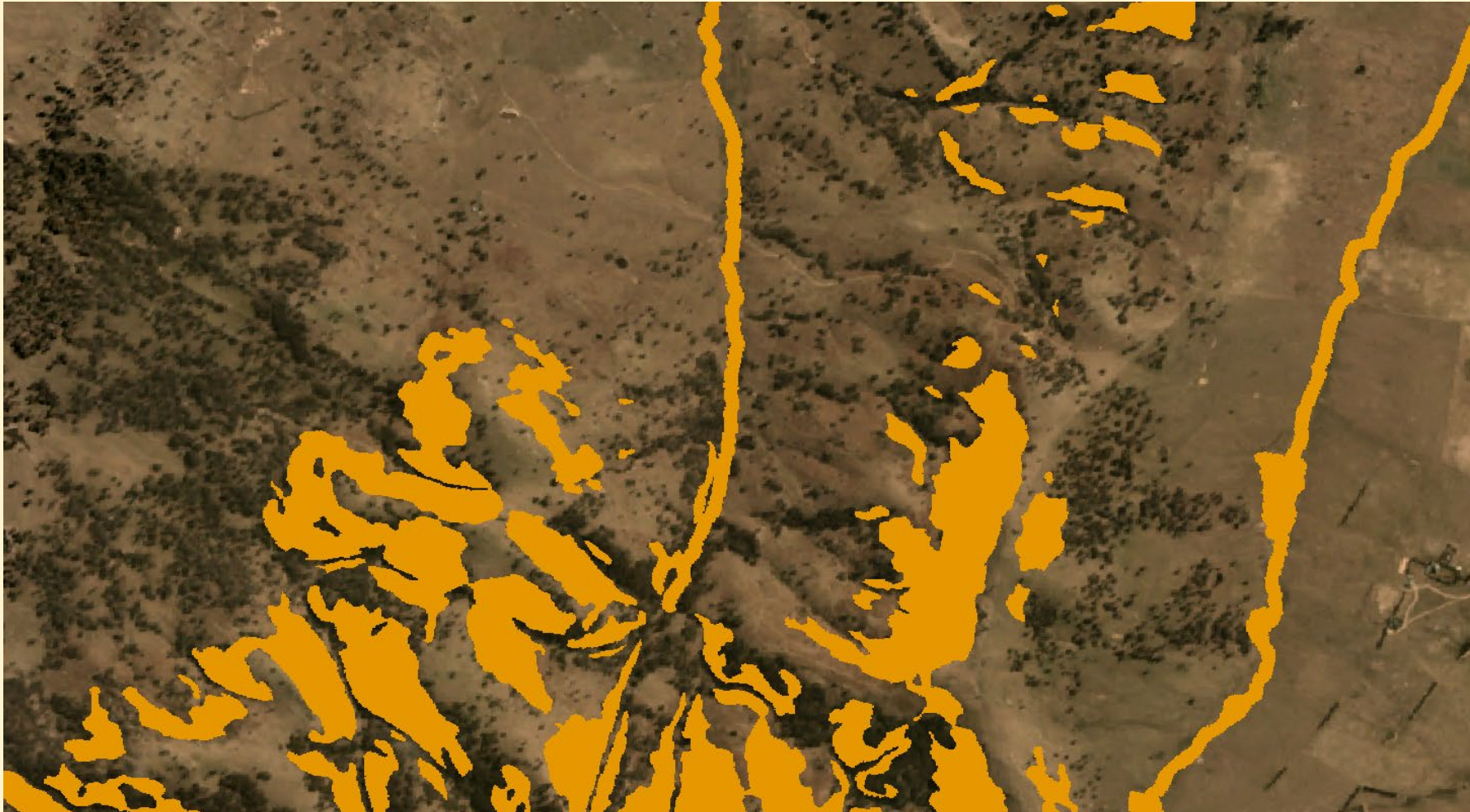
What's New?

- The transitional native vegetation regulatory (NVR) map was last updated on the 12 December 2022.
- This version includes routine monthly maintenance of the map since the annual update published 23 March 2022.
- The draft native vegetation regulatory (NVR) map viewer was published on 5 October 2022 and is available for review. The current draft NVR map displays all map layers associated with the LLS Act for the Local Government Council areas of: Albury City, Coolamon Shire, Cootamundra Gundagai Regional, Greater Hume, Hilltops, Junee Shire, Lockhart Shire, Snowy Valleys, Upper Lachlan, Wagga Wagga City and Yass

Category 3 – excluded land



Category 2 – vulnerable regulated land



Category 2 – sensitive regulated land



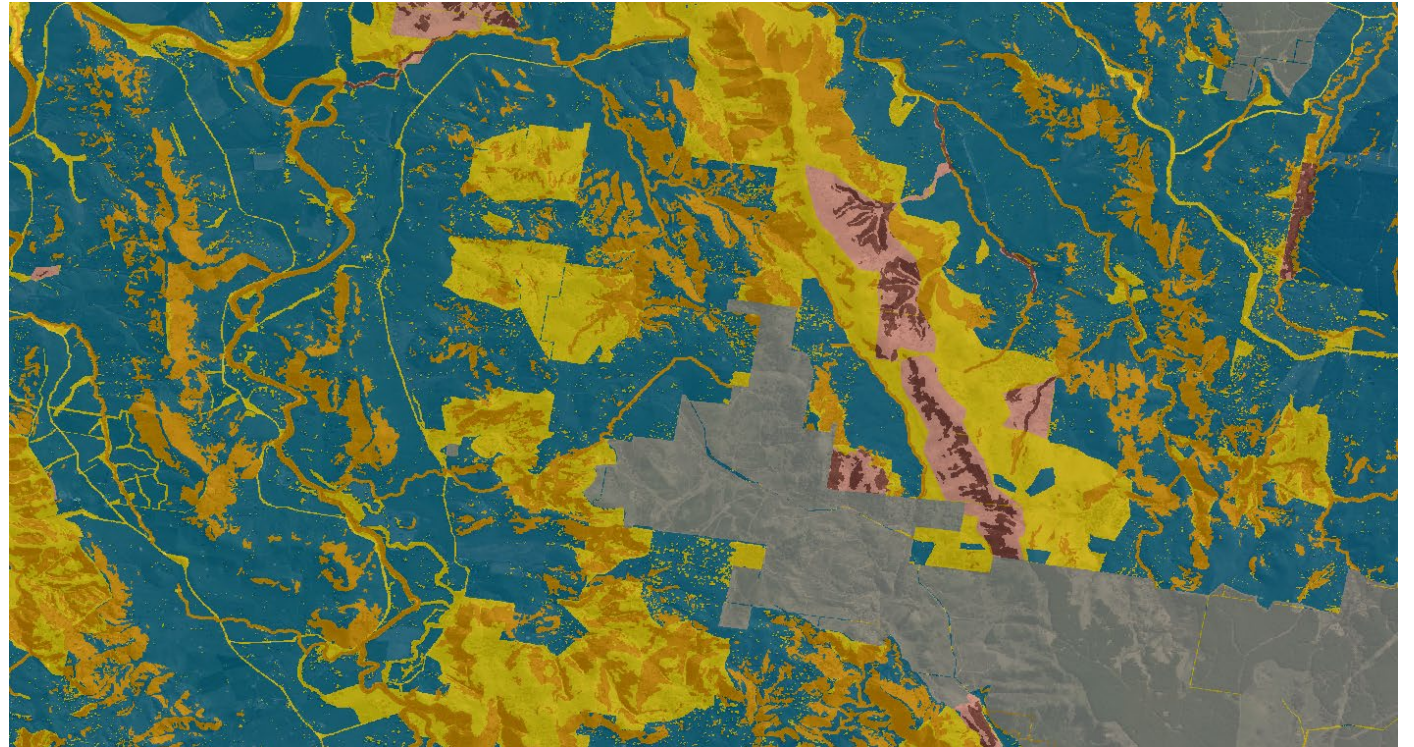
- **Category 1 – exempt land**
 - History of cultivation/cropping or agricultural intensification
- **Category 2 – regulated rural land**
 - Historically used for sustainable grazing on a mixture of native and exotic pasture species

Category 1 land

Category 2 land

Other land categories...

It is expected that the full Native Vegetation Regulatory Map with all land categories shown will be released to the public at some stage by Environment and Heritage Group (NSW Department of Planning and Environment)



No prior approval required

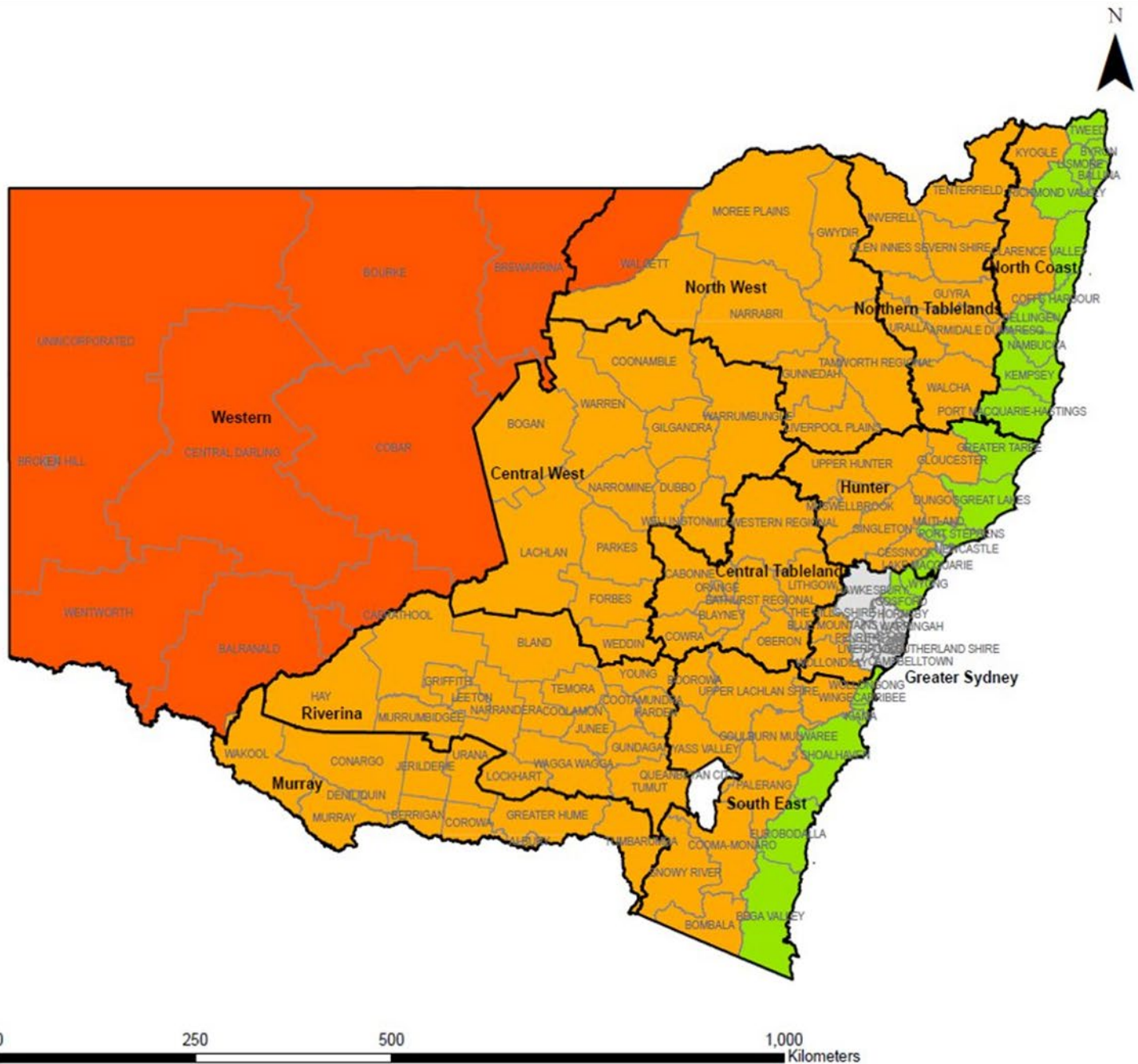
Allowable Activities

Allowable Activity Zones

Legend

Allowable Activity Zones

- Central/Tablelands Zone
- Coastal Zone
- Western Zone
- Excluded
- LGA
- NSW LLS Regions



Data has been extracted from digitised field information. The State of New South Wales and the Local Land Services and its employees, officers, agents or servants are not responsible for the result of any actions taken on the basis of the information contained on this map or for any errors, omissions or inaccuracies contained in this map.

Map created by Local Land Services, base data supplied by the © NSW Department of Finance and Services Reference data ©

Copyright New South Wales Government, All Rights Reserved. No part of this map may be reproduced without written permission.

Allowable Activities (central zone)

- Sustainable grazing
- Imminent Risk
- Fence lines & tracks (maximum 30 metres total clearing width)
- Construction timber
- Collection of firewood for personal use
- Environmental protection works
- Sheds, yards & dams (check no approval required from Council)
- Private power lines and phone lines
- Airstrips
- Traditional Aboriginal cultural activities

Allowable Activities

In Vulnerable and/or Sensitive Land (Central Zone)

- Imminent Risk
- Sustainable Grazing
- Fence lines (**max** 6m clearing width)
- Environmental protection works
- Farm tracks, if the track is necessary for access and the route minimises clearing



If it's not an allowable activity

Land Management (Native Vegetation) Code 2018

Land Management (Native Vegetation) Code 2018

- Part 1 – Preliminary
- Part 2 – Invasive Native Species
- Part 3 – Pasture Expansion
- Part 4 – Continuing Use
- Part 5 – Equity
- Part 6 – Farm Plan



Good News



- We are here help!
- Happy to take calls and discuss your options or visit our offices
- You will need to submit an Expression of Interest for activities under the Land Management (Native Vegetation) Code 2018

Bad News

- Waiting...
- If you are planning to undertake some work under the Land Management (Native Vegetation) Code 2018, submit your Expression of Interest as soon as possible

We encourage you to keep records

Legal responsibility is on you

Take photos



Diary Entries

Talk to LLS Land Management staff



Key Points



- Native Vegetation Regulatory Map – have a look at your property
- Allowable activities are available for landholders
- Options (with approval) under the Land Management (Native Vegetation) Code 2018

Our Team



- Tenterfield

- Andrew Davidson

- 0427 673 212
- andrew.davidson@lls.nsw.gov.au

- Adam Little

- 0477 451 131
- adam.little@lls.nsw.gov.au

- Dionne Coburn

- 0456 257 633
- dionne.coburn@lls.nsw.gov.au

- Glen Innes

- Ian Trow

- 0437 630 686
- ian.trow@lls.nsw.gov.au

- Inverell

- Jess ten Brink

- 0408 571 453
- jess.ten.brink@lls.nsw.gov.au