

CREATING AND RESTORING HABITAT LINKAGES 25ALG-515



Natural Resources Advisory Committee

PROJECT DESCRIPTION

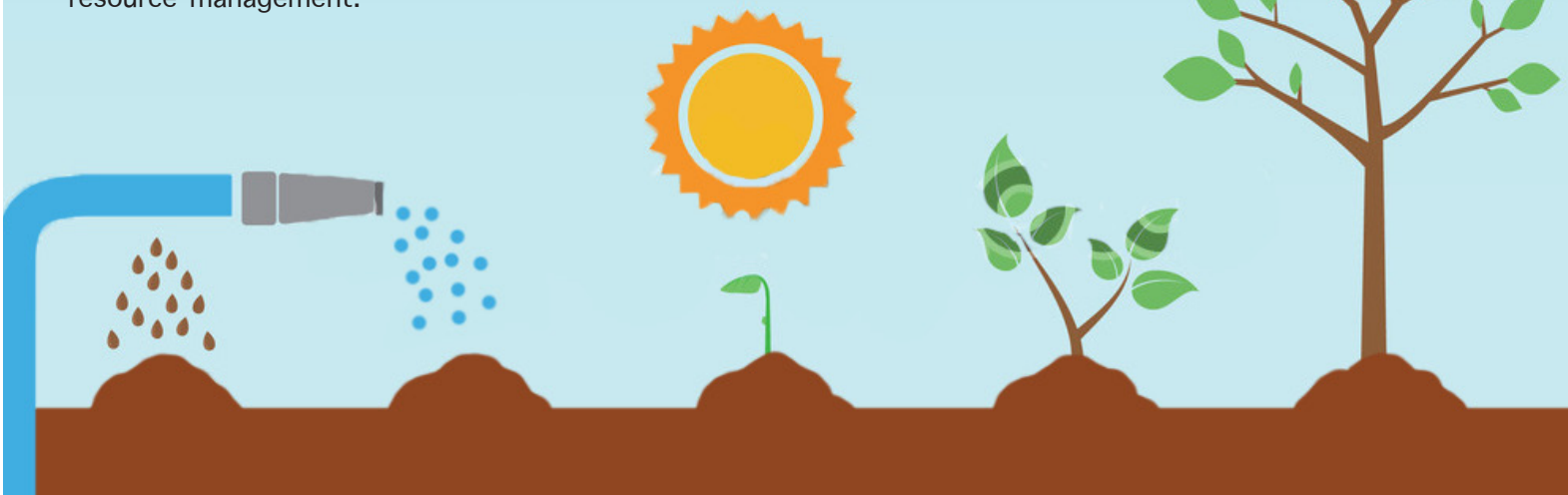
This project will establish 5,000 native seedlings across the Glen Innes district to increase native habitat on properties across the landscape and to increase and strengthen vegetation corridors between private land and public protected areas. Community engagement and capacity building will be achieved through extension activities to increase awareness and knowledge of the importance of native habitat, the presence and relevance of local endangered ecological communities.

PROJECT OUTCOMES

To maintain and improve ecosystem services through sustainable management of local and regional landscapes and also to increase engagement and participation of the community, including Landcare, farmers and Indigenous people, in sustainable natural resource management.

PROJECT ACTIVITIES

These goals will be met by community participation and engagement in 1 field day event and 5,000 seedlings being planted over an area of 10ha.



BENEFITS OF THIS PROJECT



The plant identification field trip held on the 4th of February 2016 attracted 30 participants. Participants had an interactive learning experience learning more about the native tree, shrub and grass species growing in our local district, focussed on the area north-west of Glen Innes. The event attracted both rural land managers and interested community members and has helped GLENRAC attract new members to our organisation.

This will improve the biodiversity on farm land and contribute towards improved habitat for fauna and flora in the future.

This project has created 10 new revegetation plantings across the Glen Innes district.

Revegetation plantings on farms will contribute towards sustainable land management of the natural resource base.

These plantings contain species known to be present in local Threatened Ecological Communities.

RESULTS

5,000 SEEDLINGS PLANTED

Community members and land managers participated in 1 field day event and **5,000 seedlings** were planted on 10 privately owned sites.



LESSONS WE LEARNT

GLENRAC will continue to endorse known best management practises for site preparation as the key ingredient to the successful establishment of native seedlings. Correct site preparation has assisted landholders in being able to successfully establish plantings despite a very dry Spring and Summer in 2015.

NEXT STEP?

GLENRAC will continue to seek financial support to continue to establish native plantings to create a positive benefit to both the productive and environmental landscape.

GLENRAC INC.

GLEN INNES NSW 2370
www.glenrac.org.au



Australian Government

National
Landcare
Programme



Glen East
Landcare