

## SHEEP CONFINEMENT & DROUGHTFEEDING WORKSHOP & FARM WALK

# CONSTRUCTION COSTS / PRODUCTION BENEFITS & REGULATIONS

Presented by: Hamish Dickson – AgriPartner Consulting



1

## INTRODUCTION

- Containment in the business
- Regulations
- Setup costs
- Benefits
- Questions



2

1

## CONTAINMENT IN YOUR BUSINESS

- What are your key business goals?
  - 5 year targets
  - Labour efficiency (DSE/FTE), gross margin per DSE, income from wool vs meat (\$/hd), kg lamb weaned/ha, ROI %
- Is there a plan? *“A goal without a plan is just a wish”*
- At what cost / reward?



3

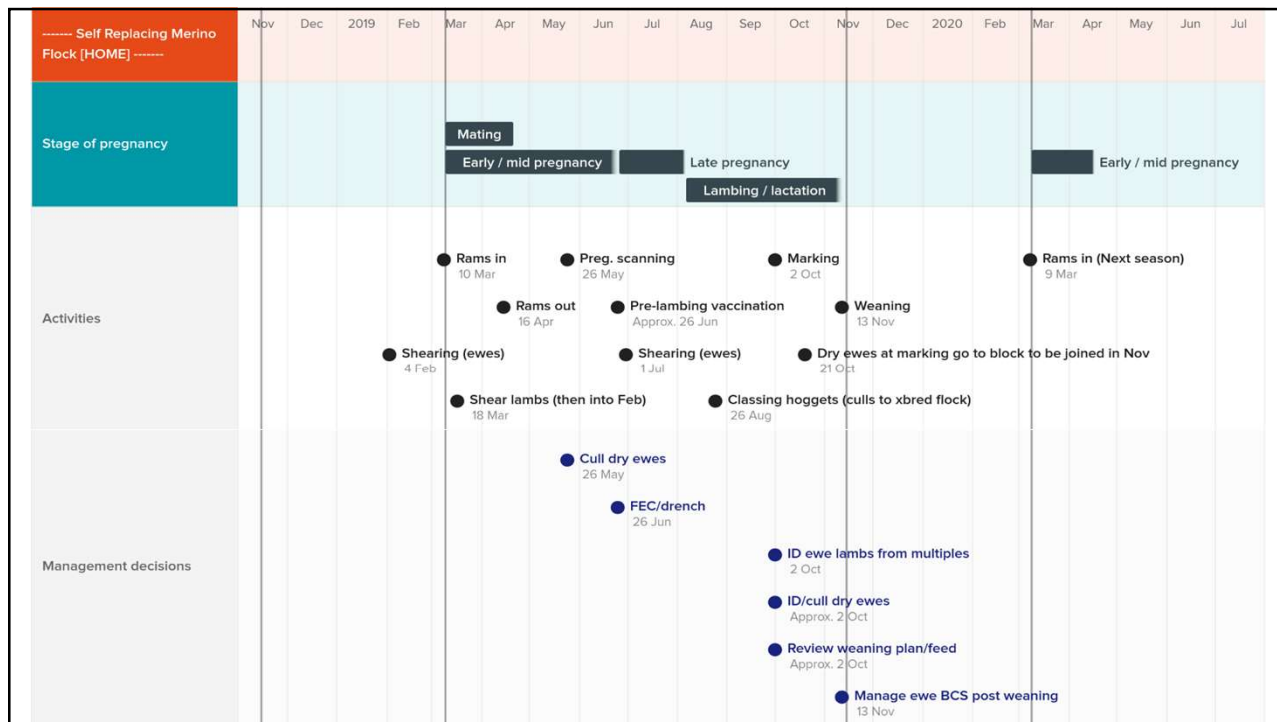
## FEED DEFICIT SITUATION – WHAT NOW?

- ~~Agist~~
- Sell
- Feed
  - Supplementary feed
  - Open other feed areas – crop?
  - Containment feeding


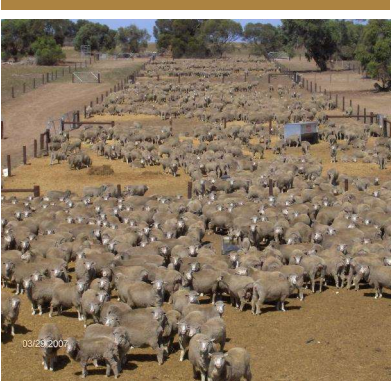
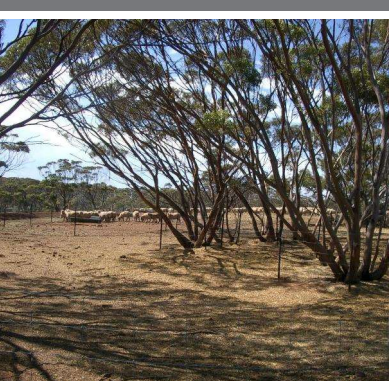


4


2



5

## SETTING UP DROUGHTLOTS



6

3

## PLANNING AND REGULATION

- **Droughlots** considered very differently to **Feedlots**
- Droughtlot characteristics:
  - Occasional/temporary use, typically a result of seasonal conditions
  - less of a production focus
  - typically more oriented to breeding stock, than finishing stock
- Must be setup correctly, but do not generally require development consent
- >100m from watercourse, >500m from dwelling/residential zone, outside of an environmentally sensitive area
- Consider vegetation laws and animal welfare laws



7

## COSTS TO SETUP – LICK FEEDERS (PER PEN)

Item	Cost	Cost (reduced)
<b>Feeders x 2</b>	<b>\$5,000</b>	<b>\$3,000</b>
<b>Fencing &amp; gates</b>	<b>\$1,700</b>	<b>\$850</b>
<b>Water troughs &amp; piping</b>	<b>\$1,000</b>	<b>\$0</b>
<b>Shade</b>	<b>\$1,500</b>	<b>\$300</b>
<b>Contractors</b>	<b>\$1,800</b>	<b>\$500</b>
<b>TOTAL</b>	<b>\$11,000</b>	<b>\$4,650</b>



8

4

## COSTS TO SETUP – TROUGHING (PER PEN)

Item	Cost	Cost (reduced)
Troughing	\$6,000	\$1,800
Fencing & gates	\$1,300	\$850
Water troughs & piping	\$1,000	\$0
Shade	\$1,500	\$300
Contractors	\$1,800	\$500
<b>TOTAL</b>	<b>\$11,600</b>	<b>\$3,450</b>



9

## COSTS TO SETUP – PER HEAD EQUIVALENT

- Assume pen capacity of 300-400 ewes
  - @ \$11,000 setup amortised over 7 years = \$4.50 per head per year (single use)
  - @ \$4,000 setup amortised over 7 years = \$1.60 per head per year (single use)

\* Simple figures, no interest costs etc



10

5



## DECISION TO FEED, BUT WHY CONFINEMENT?

11

## BENEFITS - TANGIBLE

- Feeding cost
  - 10% saving in energy expenditure
    - Ration cost ~25c head per day, for 6 weeks = \$10.50 per head
    - @10% saving = \$1.05 per head

**TABLE 1a. Energy Required by Ewes @ Condition Score 3 to maintain weight**

Day of pregnancy	Maintenance energy (MJ/d) for ewes under drought paddock conditions						Confinement Fed	
	small frame (45kg) maintain @ CS 3		medium frame (50kg) maintain @ CS 3		large frame (60kg) maintain @ CS 3		medium frame maintain @ CS 3	
	single	twin	single	twin	single	twin	single	twin
dry	7.4	7.4	8.0	8.0	9.3	9.3	6.7	6.7
50	7.6	7.8	8.4	8.6	9.7	9.9	7.0	7.2
70	8.0	8.4	8.7	9.1	10.1	10.7	7.4	7.9
100	9.0	10.2	9.9	11.1	11.5	12.9	8.6	9.8
130	11.3	14.1	12.3	15.4	14.4	17.7	10.9	14.1
days lactating	maintain @ CS 3		maintain @ CS 3		maintain @ CS 3		ewes and lambs	
	single	twin	single	twin	single	twin		
10	17.3	21.7	18.7	23.4	21.5	26.9		
30	18.7	23.9	20.2	25.8	23.2	29.6	ask for advice on confinement feeding ewes and lambs	
50	15.5	19.1	16.7	20.6	19.2	23.7		

12

## BENEFITS - TANGIBLE

- Pasture performance
  - Maintaining adequate feed on offer produces faster regrowth and improved survival of desirable species
  - Defer grazing at break to allow pastures to respond and improve transition of sheep feeding
  - 21 days extra grazing \$1.43/hd
  - Animal health, wool quality, reproduction rate



13

## BENEFITS - INTANGIBLE

- Keeping topsoil, erosion, land degradation
- Labour efficiency for management (joining / shearing etc)
- Animal welfare



14

## SUMMARY

1. Have clear production goals for confinement
2. Setup doesn't have to be expensive
3. Feed the right animals (remove any passengers)
4. Consider rules for droughtlots



15

## QUESTIONS...?

**Hamish Dickson**   **Ph:** 0427 446 499   **E:** hamish@agripartner.com.au



**Web:** [www.agripartner.com.au](http://www.agripartner.com.au)



16



