

# Severn River River Health Project

GLENRAC secured funding in 2011 for \$178,310 for the Severn River Health Project. This project has been run collaboratively by the GLENRAC & GWYMAC Landcare networks based in Glen Innes & Inverell respectively.

The project targeted activities that would contribute to improved river health and that of the adjoining landscape to the Severn River from the headwaters east of Glen Innes to the junction of the Severn and Beardy Rivers downstream of Ashford.

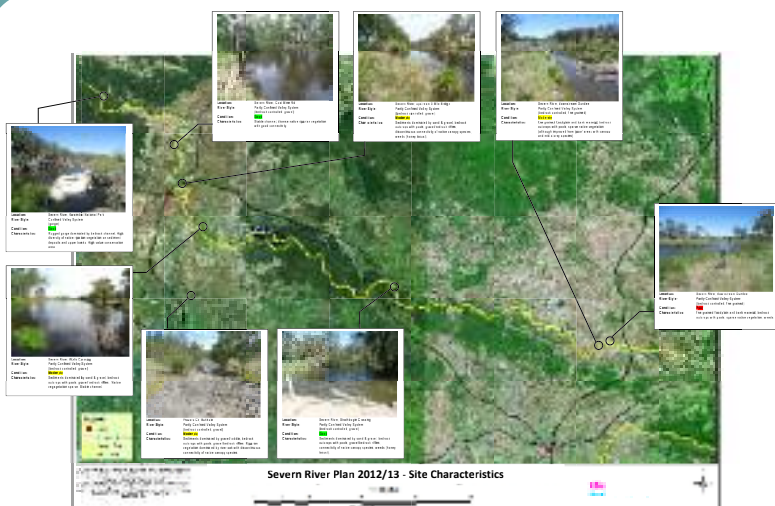
## Did You Know?

The Severn River System has -

- Catchment area is 3,700km<sup>2</sup>
- Major tributaries including Beardy Waters, Reddestone Creek, Wellingrove Creek, Oakey Creek and Frazers Creek
- Pindari Dam is located within the middle sections of the catchments on the Severn River
- The dam has a storage capacity of 312,000 mega-litres

## What has the project achieved?

- River Reach Plan developed and documented
- Funded 24 properties to implement on ground works activities
- Engaged 43 land managers in the implementation of these activities
  - Hosted two Healthy Soils workshops
  - Hosted two Property Planning & Management workshops
  - Workshops attended by 86 land managers



## Summary of the River Reach Plan

- The plan covered 180km of the Severn River
- Developed by NSW Soil Conservation Service
- 55% rated as good condition
- 34% rated as moderate condition
- 11% rated as poor condition
- Key issues identified were weed invasion and uncontrolled stock impact

# Severn River River Health Project

## Significant weeds present on the Severn River

- Honey locust
- Willows
- Tree of heaven
- Privet
- African Love Grass

## What on ground works were funded?

- 24 properties received funding to a maximum value of \$5,500
- 24 Land Management Agreements negotiated
- The project funded a range of activities as identified by land managers as priorities in implementing their property management plans
- 4.5ha earthworks to reduce the risk of soil loss through wind and water erosion
- 12.0 km of fencing to protect to the riparian zone
- Partial funding of 3 off-stream watering systems & 6 earth dams as alternate water points for livestock
- Approximately 50.0 ha of weed control work, targeting blackberry, honey locust and privet

## Flow on benefits from these on-ground works are-

- Stabilisation of stream banks
- Improved water quality
- Improved habitat for both aquatic and terrestrial flora & fauna
- Improved biodiversity
- Improved stock management and health
- Increased participation in natural resource management
- Increased participation in Landcare activities
- Increased Landcare memberships

If you would like to know more about participating in projects like the Severn River Health project contact your local Landcare office.

GLENRAC  
Ph 02 6732 3443  
[www.glenrac.org.au](http://www.glenrac.org.au)

GWYMAC Landcare  
Ph 02 6721 1241  
[www.gwymaclandcare.com.au](http://www.gwymaclandcare.com.au)

